

Bk 33 Pg 89

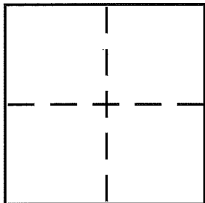
CORNER RECORD

Document Number CR 3697

City of BERKELEY

County of ALAMEDA, California

Brief Legal Description Lot 3, Blk M, Fourth Avenue Terrace



CORNER TYPE

Government Corner ☐ Control ☐
Meander ☐ Property ☒
Rancho ☐ Other ☐
Date of Survey June 2009

COORDINATES (Optional)

N. _____
E. _____
Zone _____ NAD27 ☐ NAD83 ☐
NAD83 Epoch _____
Elev. _____
Vert. Datum: NGVD29 ☐ NAVD88 ☐
Meas. Units: Metric ☐ Imperial ☐

Corner - Left as found ☐ Found and tagged ☐ Established ☐ Reestablished ☒ Rebuilt ☐

Identification and type of corner found: Evidence used to identify or procedure used to establish or reestablish the corner:

City Survey Monuments

A description of the physical condition of the monument as found and as set or reset:

As shown on Reverse

SURVEYOR'S STATEMENT

This Corner Record was prepared by me or under my direction in conformance with the Land Surveyor's Act on June 9, 2009

Signed [Signature] P.L.S or R.C.E. No. 18650

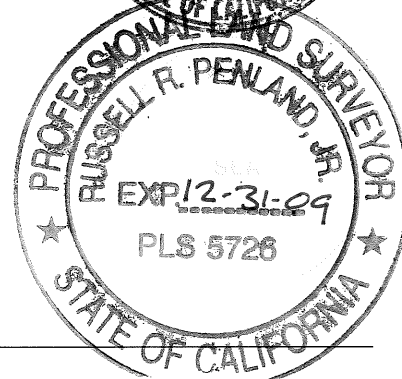
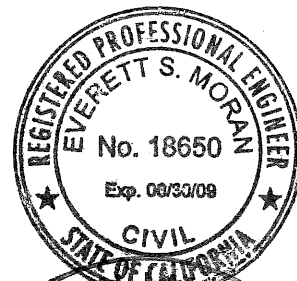
COUNTY SURVEYOR'S STATEMENT

This Corner Record was received 6-15-09
and examined and filed 7-26-09

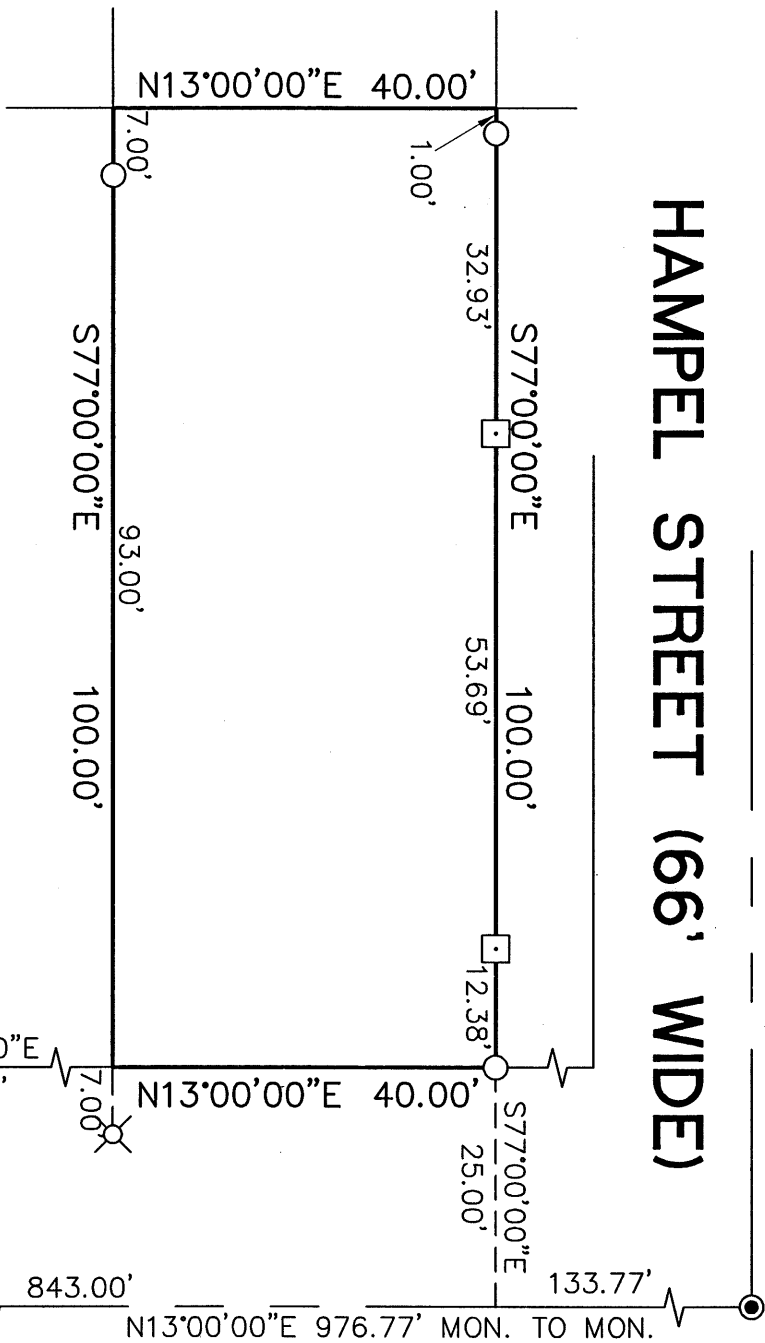
Signed [Signature] P.L.S or R.C.E. No. 5726

Title COUNTY SURVEYOR

County Surveyor's Comment _____



HAMPEL STREET (66' WIDE)



CORNER RECORD

LOT 3, BLOCK M,
 MAP OF FOURTH AVENUE TERRACE (22 M 23)
 LOCATED AT 4025 LA CRESTA AVENUE
 CITY OF OAKLAND, COUNTY OF ALAMEDA,
 CALIFORNIA
 JUNE 2009
 SCALE: 1" = 20'

MORAN ENGINEERING, INC.

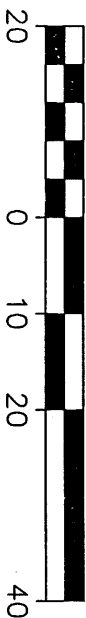
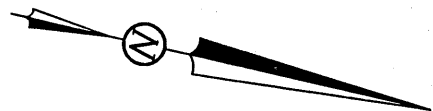
CIVIL ENGINEERS \ LAND SURVEYORS
 1930 SHATTUCK AVENUE, SUITE A
 BERKELEY, CALIFORNIA 94704
 (510) 848-1930

38th STREET (66' WIDE)

LA CRESTA AVENUE (60' WIDE)

LEGEND

- FOUND CITY MONUMENT
- SET 5/8" REBAR WITH RCE 18650 CAP
- SET RCE 18650 TAG
- ⊗ SET HUB WITH RCE 18650 TAG



SCALE: 1" = 20'