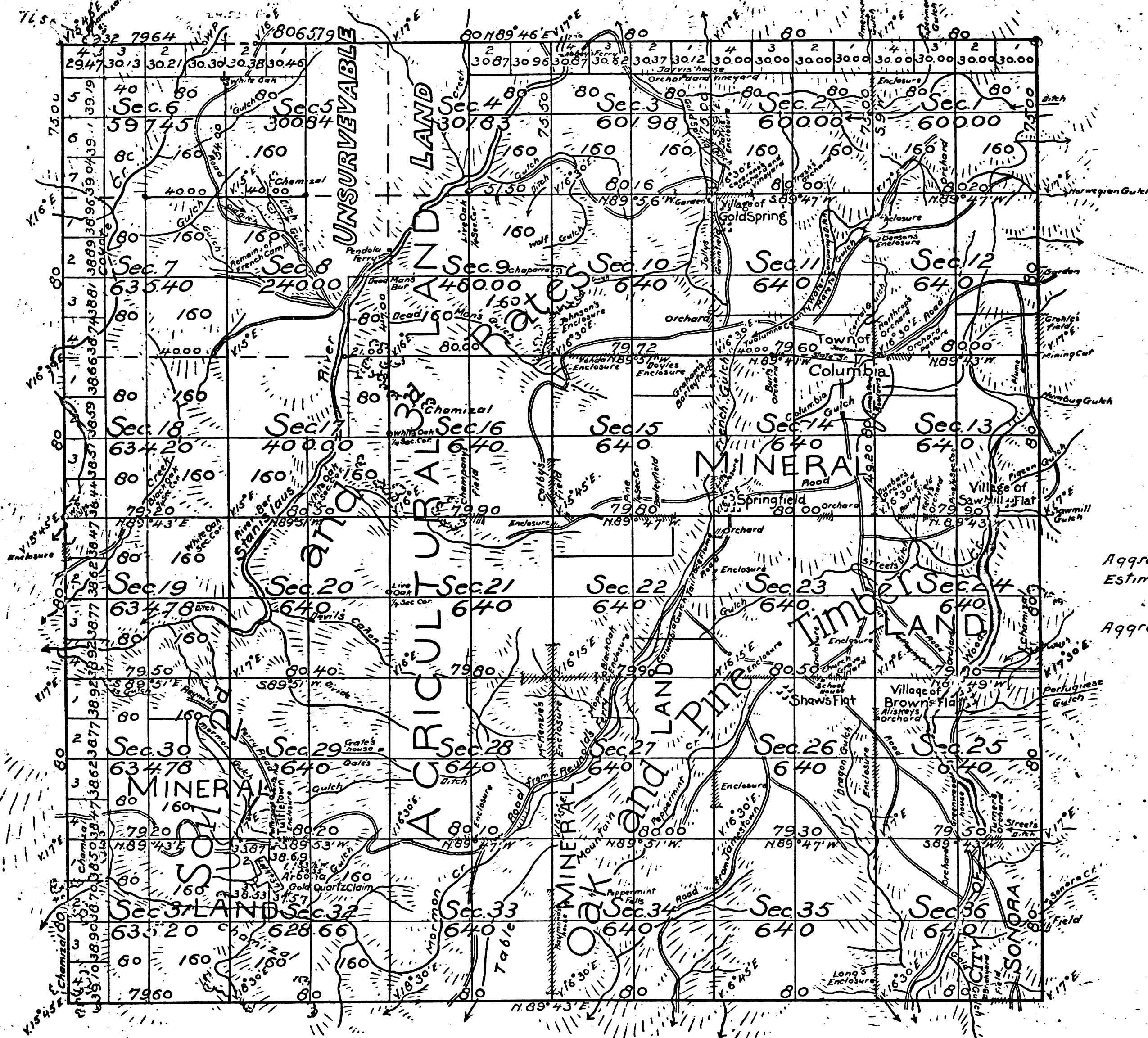


Township N° 2 North

Range N° 14 East

Mount Diablo Meridian.

1



Aggregate Area of Public Land. 21365.12 Acres  
 Estimated Mining Claim 11.34  
 Unserved Mountain Land 1402.65  
 Aggregate 22779.11

DEPARTMENT OF THE INTERIOR,  
 GENERAL LAND OFFICE,  
 Washington, D. C. Sept. 11, 1871  
 I hereby certify that this is a true copy  
 of the plat of official survey of the lands  
 to which it relates, on file in this office.

*Rufus H. Smith*  
 Recorder, General Land Office.

| Surveys Designated        | By whom Surveyed | Date of Contract                | Amount of Surveys     | When Surveyed               |
|---------------------------|------------------|---------------------------------|-----------------------|-----------------------------|
| Township line colored red | Fleming Amyx     | September 30 <sup>th</sup> 1858 |                       | 1859                        |
| Boundaries of Lot N° 37   | T. M. Wilson     |                                 |                       | 1867                        |
| Rest of Township lines    | A. B. Beauvais   | August 27 <sup>th</sup> 1869    | 22 mls. 69 chs 24 lks | 1869                        |
| Section lines             |                  |                                 | 55 - 36 - 18 -        | April 16 <sup>th</sup> 1870 |

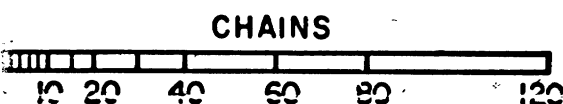
The above Map of Township N° 2 North, Range N° 14 East, Mount Diablo Meridian  
 is strictly conformable to the field notes of the Surveys thereof on file in this Office,  
 which have been examined and approved.  
 Surveyor General's Office  
 San Francisco California  
 February 18<sup>th</sup> 1871.

*J. R. Hardenbergh*

Surv. Gen. Cal.

41 132

CHAINS



3

BLM 49