

RECORD OF SURVEY

OF A PORTION OF THE HIGHWAY 88 SCENIC STRIP AS DESCRIBED
IN DEED TO THE UNITED STATES OF AMERICA, RECORDED IN BOOK
36 AT PAGE 295, AND BOOK 39 AT PAGE 391, OFFICIAL RECORDS
OF AMADOR COUNTY, AND AS SHOWN ON THE BUREAU OF PUBLIC ROADS
RIGHT OF WAY MAP, STA. 0+00 TO STA. 690, DATED MAY, 1946,
LOCATED IN SECTION 35, T. 8 N. R. 13 E., SECTIONS 13, 14, 20, 21, 22, 23
24, 28, 29, 30, T. 8 N. R. 14 E., SECTIONS 16, 17, T. 8 N. R. 15 E., M. D. M.

AMADOR COUNTY, CALIFORNIA

SCALE: 1" = 200' EMERSON L. SMITH L.S. 3062 SEPT., 1971

MERIDIAN BASED ON THE RECORD MERIDIAN AS COMPUTED FROM
THE SECTION CORNERS AND ROTATED FROM THE TRUE MERIDIAN
AS DETERMINED BY SOLAR OBSERVATION AS FOLLOWS:

PARCEL 5C: BASED ON SOLAR OBSERVATION.

PARCELS 1A, 2A, 1: LEFT 0°02'40" FROM THE TRUE MERIDIAN.

PARCELS 2, 3A: LEFT 0°04'50" FROM THE TRUE MERIDIAN.

PARCELS 3, 4A, 4, 5A, 1C, 2C, 6A, 3C: RIGHT 0°05'30" FROM THE TRUE MERIDIAN.

PARCELS 7A, 4C: LEFT 0°09'30" FROM THE TRUE MERIDIAN.

LEGEND:

- 2" BRASS CAPPED PIPE SET UNLESS OTHERWISE NOTED.
- ⊘ 2" BRASS CAPPED PIPE SET AT CURVE B.C. OR E.C.
- COPPERWELD PIN SET (5/8")
- NUMBER STAMPED ON MONUMENT.
- 314
- Sch INDICATES SPIRAL CHORD.

BOUNDARY POINTS ON SECTION LINES AND SECTION
SUBDIVISION LINES ARE PUT AT THE RECORD
LOCATION ACCORDING TO THE DEED AND NOT
NECESSARILY ON THE SECTION OR SUBDIVISION
LINE.

SURVEYOR'S CERTIFICATE

THIS MAP CORRECTLY REPRESENTS A SURVEY MADE
BY ME OR UNDER MY DIRECTION IN CONFORMANCE
WITH THE REQUIREMENTS OF THE LAND SURVEYOR'S ACT
AT THE REQUEST OF UNITED STATES FOREST SERVICE.

Emerson L. Smith
EMERSON L. SMITH L.S. 3062

COUNTY SURVEYOR'S CERTIFICATE

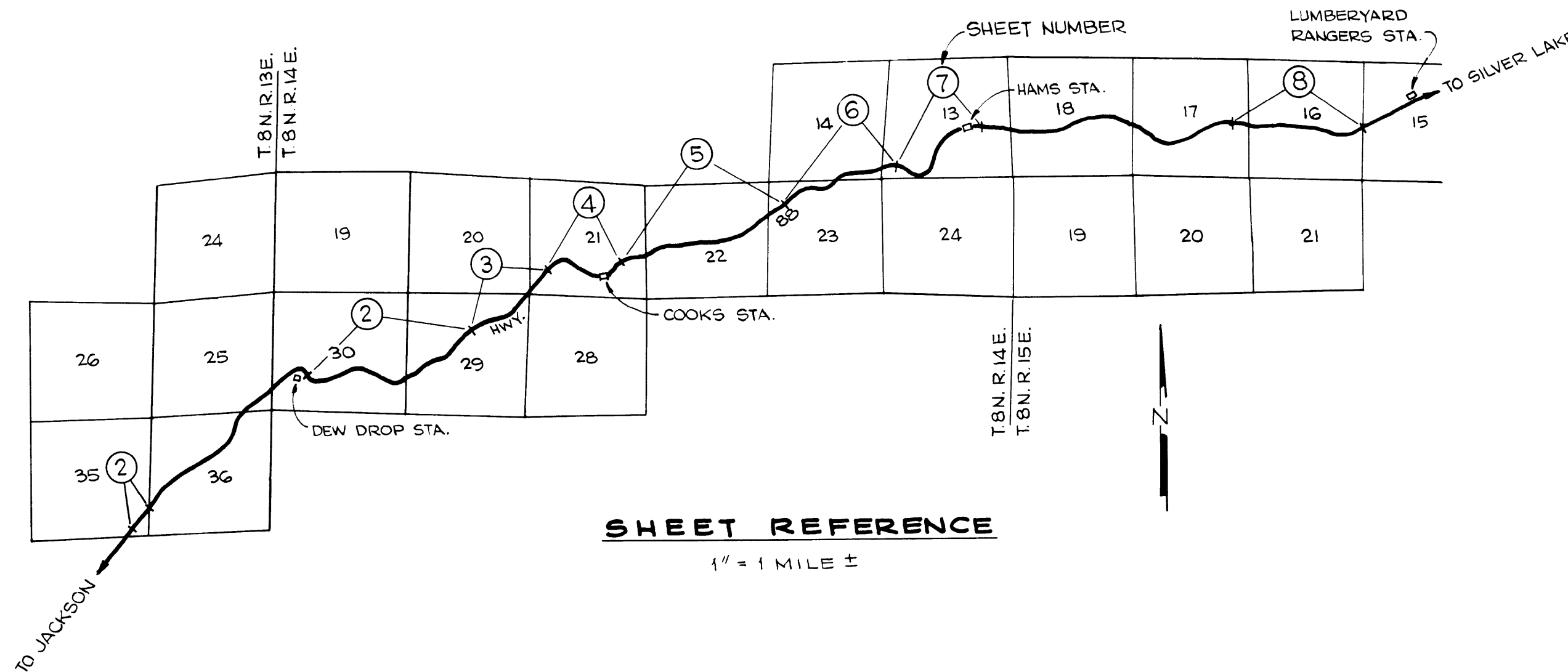
THIS MAP HAS BEEN EXAMINED FOR CONFORMANCE
WITH THE REQUIREMENTS OF THE LAND SURVEYOR'S ACT
THIS 25th DAY OF Oct, 1971.

Keith J. Mason L.S. 2774
AMADOR COUNTY SURVEYOR

COUNTY RECORDER'S CERTIFICATE

FILED THIS 26 DAY OF October, 1971, AT 4:52
P.M. IN BOOK 19 OF MAPS AND PLATS AT PAGE 1
AT THE REQUEST OF THE AMADOR COUNTY SURVEYOR.
FEE \$9.00

Anthony Sutton
AMADOR COUNTY RECORDER
By *Norma L. Skittle*, Deputy



SHEET REFERENCE

1" = 1 MILE ±