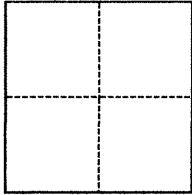


CORNER RECORD

Agency Index

Document Number

BK 146 PG 83

City of BERKELEY County of ALAMEDA, CaliforniaBrief Legal Description MONUMENT AT THE INTERSECTION OF DANA ST AND CHANNING WAY**CORNER TYPE****COORDINATES (Optional)**

- ☐ Government Corner ☒ Control
☐ Meander ☐ Property
☐ Rancho ☐ Other

Date of Survey April 30, 2021

N. _____ E. _____

Elevation _____

Units

☐ Metric☒ U.S. Survey Foot

Horizontal Datum _____

Zone _____

Epoch Date _____

Vertical Datum _____

☐ Complies with Public Resources Code §§8801-8819☐ Complies with Public Resources Code §§8890-8902

PLS Act Ref.:

☐ 8765(d)☒ 8771☐ 8773☐ Other:Corner/
Monument:☒ Left as found☐ Established☐ Rebuilt☒ Pre-Construction☐ Found and tagged☐ Reestablished☒ Referenced☐ Post-Construction

Narrative of corner identified and monument as found, set, reset, replaced, or removed:

☒ See sheet #2 for description(s):**SURVEYOR'S STATEMENT**

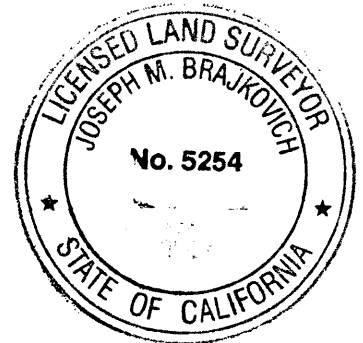
This Corner Record was prepared by me or under my direction in conformance with

the Professional Land Surveyors' Act on

5-4-2021

Signed

P.L.S. or R.C.E. No.

5254**COUNTY SURVEYOR'S STATEMENT**

This Corner Record was received

and examined and filed

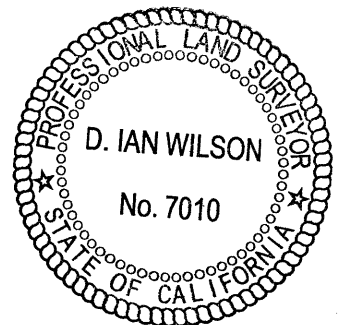
MAR 28 2022

Signed

P.L.S. or R.C.E. No.

7010Title ALAMEDA COUNTY SURVEYOR

County Surveyor's Comment



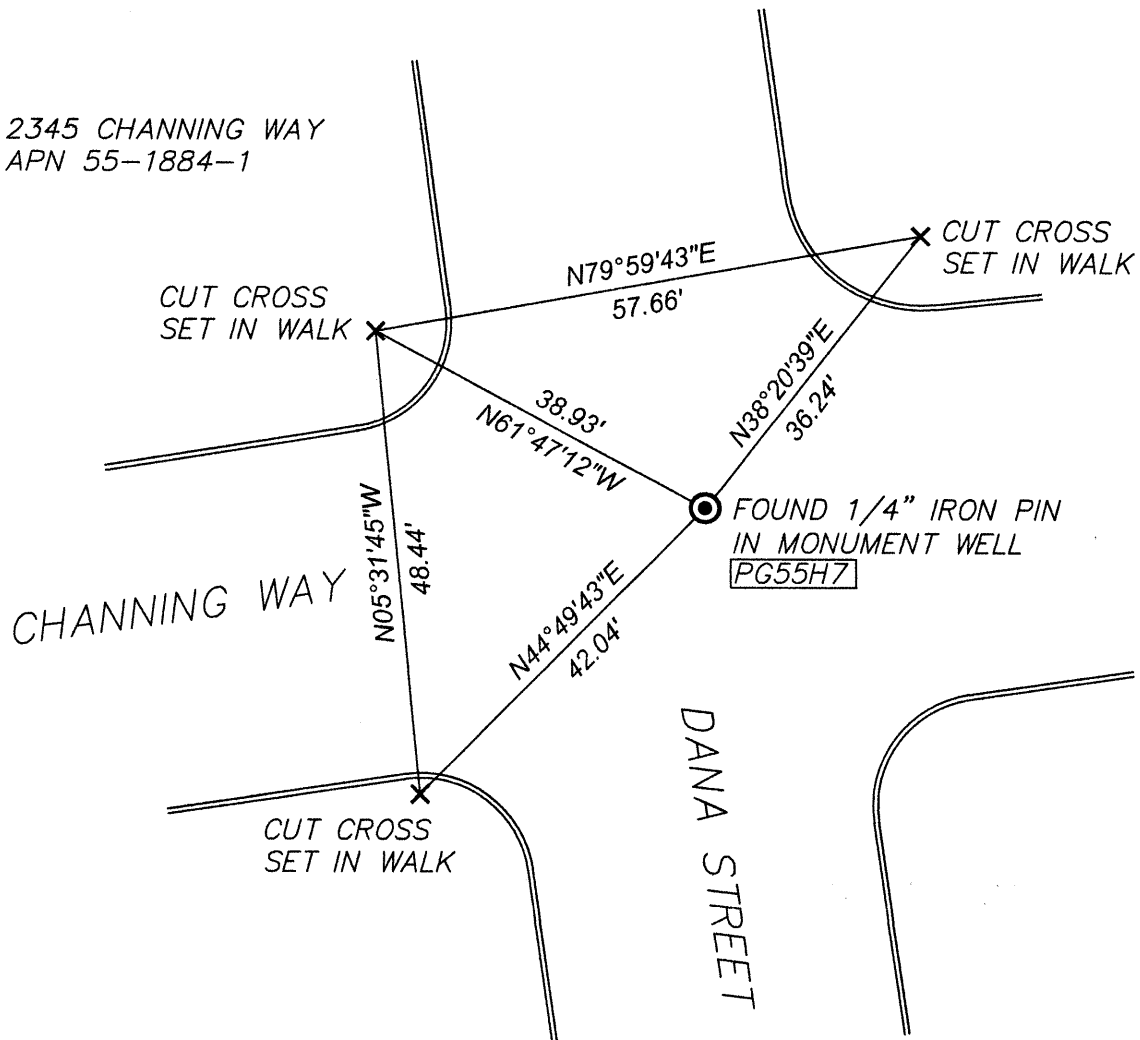
LEGEND

- AA#### ALAMEDA COUNTY MONUMENT ID
 ##### STREET ADDRESS
 APN ASSESSOR'S PARCEL NUMBER
 X CUT CROSS
 (O) FOUND SURVEY MONUMENT



SCALE: 1" = 20'

2345 CHANNING WAY
APN 55-1884-1



20141-050721