



PANDA RESTAURANT GROUP INC.

1683 Walnut Grove Ave.  
Rosemead, California  
91770

Telephone: 626.799.9898  
Facsimile: 626.372.8288

All ideas, designs, arrangement and plans indicated or represented by this drawing are the property of Panda Express Inc. and were created for use on this specific project. None of these ideas, designs, arrangements or plans may be used by or disclosed to any person, firm, or corporation without the written permission of Panda Express Inc.

REVISIONS:

PLAN REVIEW COMMENTS	03/26/2021
PLAN REVIEW COMMENTS	04/22/2021

ISSUE DATE:

1	95% SUBMITTAL	01/11/2020
2	100% SUBMITTAL	04/16/2021
3	100% RESUBMITTAL	05/14/2021
4	FINAL SUBMITTAL	06/08/2021

DRAWN BY: JMJ

PANDA PROJECT #: D7395

ARCH PROJECT #:



**MARSHALL & BOLLWERK  
ENGINEERING, INC.**  
8881 Highway 92, Suite 400  
Woodstock, Ga. 30189  
p: (678) 795-0333, f: (678) 325-4559  
e: mbe@mbeinc.net



PANDA EXPRESS

ROBINS AFB SHOPPING CENTER  
ROBINS AFB, GA

E-601

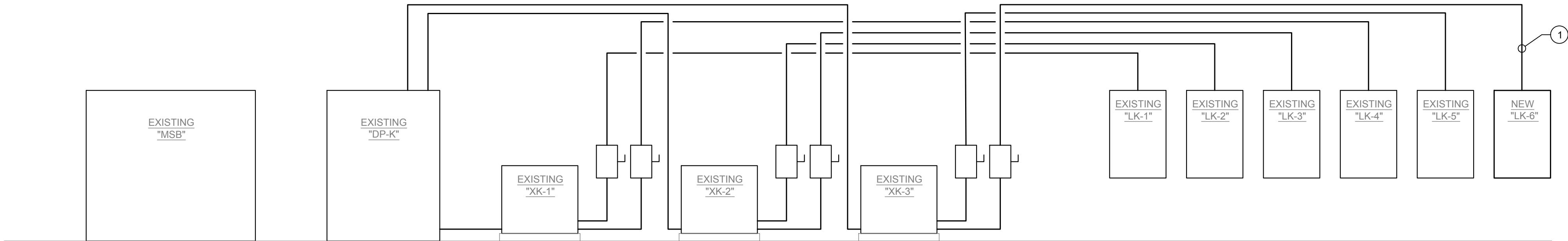
PANEL SCHEDULES & LOAD CALC'S

"LK-6" (NEW)					PANELBOARD					208Y/120V, 3φ, 4W, 225A MCB RATED 10 k A.I.C. GROUND BUS				
MOUNTING: FLUSH LOCATION: BACK OF HOUSE. TYPE: BOLT ON BKRS. w/ GROUND BUS NEMA RATING: 1					PROVIDE AN ARC FLASH WARNING SIGN PER NEC 110.16.									
BRKR	DESCRIPTION	WIRE	BKR	PL	kVA			PL	BKR	WIRE	DESCRIPTION	BRKR		
					A	B	C							
1	PLUGMOLD, MGR STA '49A'	12	20	1	0.90	1.30		1	20	10	INDUCTION DRY WELL 3F, 3G-GFI	2		
3	VCR MONITOR '92-2-16'	12	20	1		0.36	1.30	1	20	10	INDUCTION DRY WELL 3F, 3G-GFI	4		
5	COMP '83A', MGR STA '49A'	12	20	1			0.18	1.30	1	20	10	INDUCTION DRY WELL 3F 3G-GFI	6	
7	MENU BOARDS - RECPS '96-3A'	12	20	1	0.54	1.95			1	20	10	INDUCTION DRY WELL 3F, 3G-GFI	8	
9	SER. AREA POS'S 94, PTRS '86A'	12	20	1		0.36	1.30		1	20	10	INDUCTION DRY WELL 3G-GFI	10	
11	SPARE	12	20	1			0.00	1.30	1	20	10	INDUCTION DRY WELL 3G-GFI	12	
13	WALK-IN COOLER EVAP. - '31M'	12	15	2	0.25	1.30			1	20	10	INDUCTION DRY WELL 3G-GFI	14	
15						0.25	0.84		1	20	12	RADIANT TOP HEATER '1S2B1'- GFI	16	
17	WALK-IN COOLER COND. - '31-S'	12	15	2			1.04	0.84	1	20	12	RADIANT TOP HEATER '1S2B1'- GFI	18	
19	LIGHTS	12	20	1	1.04	1.10			1	20	12	RADIANT TOP HEATER '1S2B2'- GFI	20	
21						0.72	1.80		1	20	12	SERVING COUNTER '2Q'	22	
23	LOGO 'S2'/I.D. SIGN 'S1'	12	20	1			1.20	0.18	1	20	12	RICE WARMER '54A'	24	
25	REF. PREP TABLE '34Qn'- GFI	12	20	1	1.44	0.80			1	20	12	COKE REFRIG. '12B'- GFI	26	
27	REF. PREP TABLE '34Qn'- GFI	12	20	1		1.08	0.90		2	15	12	MICROWAVE - '55A'- GFI	28	
29	WORKTOP FRZR '3QJ'- GFI	12	20	1			1.44	0.90					30	
31	FOOD PROCESSOR '53'	12	20	1	0.34	0.00			1	20	-	SPARE	32	
33	FRY. CONTROL '21A'	12	20	1		1.20	0.00		1	20	-	SPARE	34	
35	(SHUNT)	-	-	-			0.00	0.00	-	-	-	(SHUNT TRIP)	36	
37	RICE HOLDING CABINET '24H'- GFI	10	20	1	1.78	3.00							38	
39	2 DR UPRIGHT FREEZER '30D'- GFI	12	20	1		0.76	3.00		3	35	10	24" ELECTRIC GRIDDLE - '23B'	40	
41	HOOD/ANSUL CONT PNL '1M' & '1M5'	12	20	1			1.00	3.00					42	
43					1.80	1.50			1	20	12	RECEPT. ON ROOF	44	
45	MAKE-UP AIR UNIT - 'MJA-1'	10	30	3		1.80	2.09						46	
47							1.80	2.09	3	30	10	CONDENSING UNIT - 'C-1'	48	
49					1.42	2.09							50	
51	HOOD EXHAUST FANS - 'EF-1' & 'EF-2'	12	20	3		1.42	2.09						52	
53							1.42	2.09	3	30	10	CONDENSING UNIT - 'C-2'	54	
55					0.00	2.09							56	
57	SPARE	-	15	3		0.00	0.00		-	-	-	SPACE	58	
59							0.00	0.00	-	-	-	SPACE	60	
TOTAL					24.62	21.26	19.77	kVA						
					205	177	165	AMPS						
PER NEC ARTICLE 220					65.66	kVA	182	AMPS						
NOTES: FURNISH w/ FEED-THRU LUGS, ISOLATED GROUND, & SOLID GROUND BUS. * LOAD SHOWN IS ADJUSTED BY 125% PER NEC IN THE FEEDER LOAD CALCULATION. ■ PROVIDE SHUNT TRIP TYPE CIRCUIT BREAKER. IG PROVIDE ISOLATED GROUND CONDUCTOR WITH THIS CIRCUIT. GFI PROVIDE A GFI TYPE CIRCUIT BREAKER. 1 KITCHEN LOAD SHOWN IS ADJUSTED BY 65% PER NEC IN THE FEEDER LOAD CALCULATION. 2 LOAD IS NON-SIMULTANEOUS TO OTHER KITCHEN EQUIPMENT AND IS NOT FIGURED IN FEEDER LOAD TOTALS.														

NEW PANEL "LK-6" SHALL BE OF PANELBOARD CONSTRUCTION. THE BASIS OF DESIGN IS ABB-GE RQ SERIES, 60 POLE PANELBOARD (THIS IS THE NEW VERSION OF THE A-SERIES II PANELBOARD) TO MATCH THE SPECIFICATION OF THE EXISTING TO BE REMOVED WITH THE EXCEPTION OF HAVING 60 POLES.

PANEL SCHEDULES 1

NOT TO SCALE E-601



- THE CONTRACTOR SHALL FIELD VERIFY ACTUAL CONDITIONS TO LOCATE WHERE THE PANEL SERVING THE PANDA EXPRESS SUITE IS SERVED FROM AND THE EXISTING FEEDERS & BREAKER SIZES PRIOR TO THE START OF WORK.
- THE PANELBOARDS ARE EXISTING TO REMAIN, UNO.
- ALL WIRE #8 AND SMALLER TO BE THWN/THHN CU.; #6 AND LARGER TO BE XHHW CU.
- UNLESS NOTED, ALL DEVICES AND TERMINATIONS 100 AMPS AND LESS TO BE RATED FOR 60°C WIRE, OVER 100 AMPS, 75°C WIRE.

SINGLE LINE DIAGRAM GENERAL NOTES 4

NOT TO SCALE E-601

- EXISTING PANEL "LK-6" SHALL BE DISCONNECTED AND TURNED OVER TO BASE CIVIL ENGINEERING. THE CONTRACTOR SHALL FURNISH & INSTALL THE NEW PANEL. THE CONTRACTOR SHALL FIELD VERIFY THE EXISTING DISCONNECT AND FEEDER THE PANEL IS FED FROM. FURNISH w/ THREE (3) NEW 200A TYPE "RK-1" FUSES AND CIRCUIT WITH, MINIMUM 4#30, 1#6EG., 1#6EG. CU., 2"C. THE EXISTING FEEDER MAY BE REUSED IF IN GOOD CONDITION, APPROVED BY BASE CIVIL ENGINEERING, AND MEETS THE MINIMUM FEEDER SIZE REQUIRED.

SINGLE LINE DIAGRAM KEYED NOTES 3

NOT TO SCALE E-601

EXISTING SINGLE LINE DIAGRAM 2

NOT TO SCALE E-601

BID SET - 2021/06/28