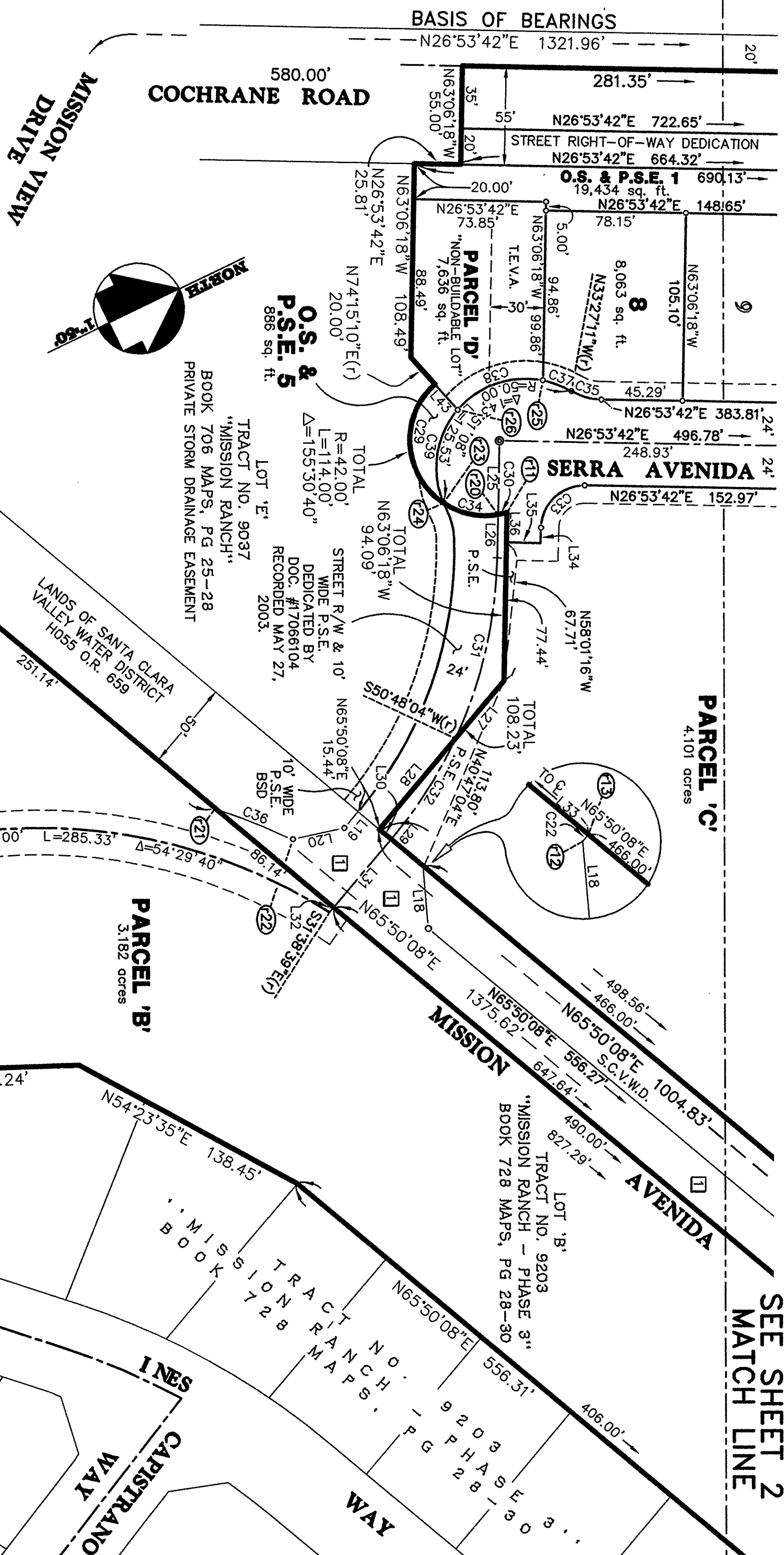


557959L1

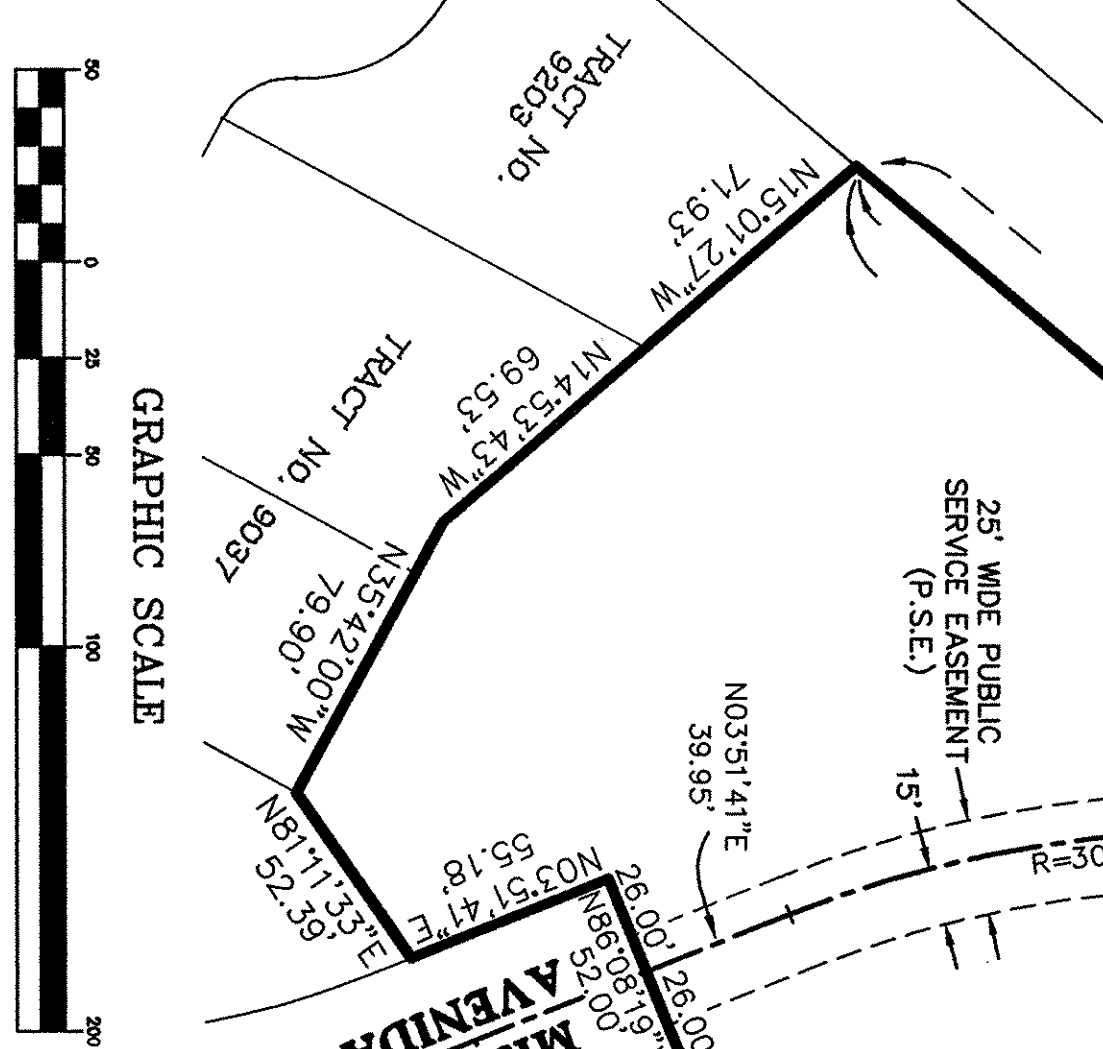


LEGEND

- FND 3/4" I.P., TAGGED R.C.E. 24893
- UNLESS OTHERWISE NOTED
- FND STD CITY MON., TAGGED R.C.E. 24893
- UNLESS OTHERWISE NOTED
- SET 3" IRON PIPE, TAGGED R.C.E. 24893
- SET STANDARD CITY MONUMENT, TAGGED R.C.E. 24893
- CENTERLINE
- DISTINGUISHING BOUNDARY LINE
- BY SEPARATE DOCUMENT
- MONUMENT
- OFFICIAL RECORDS OF SANTA CLARA CO.
- O.S. OPEN SPACE/COMMON AREA EASEMENT
- P.S.E. PUBLIC SERVICE EASEMENT
- (1) RADIAL BEARING
- REMAINDER
- S.D.E. STORM DRAINAGE EASEMENT
- T.E.V.A. TEMPORARY EMERGENCY VEHICLE ACCESS EASEMENT

BASIS OF BEARINGS

THE BEARINGS SHOWN UPON HEREIN MAP ARE BASED UPON THE CENTERLINE OF COCHRANE ROAD, AS FOUND MONUMENTED AND RECORDED AS NORTH 26°53'42" EAST, AND SHOWN UPON THAT CERTAIN TRACT MAP NO. 9203 ENTITLED "MISSION RANCH - PHASE 3", FILED FOR RECORD IN BOOK 728 OF MAPS AT PAGES 28-30, AT THE OFFICE OF THE RECORDER OF SANTA CLARA COUNTY.



CURVE TABLE			
NO.	RADIUS	LENGTH	DELTA
C1	40.00'	62.04'	88°52'20"
C2	374.00'	53.68'	08°13'27"
C3	34.00'	17.76'	29°55'41"
C4	50.00'	35.36'	40°30'58"
C5	50.00'	48.18'	55°12'28"
C6	50.00'	46.23'	52°58'45"
C7	34.00'	17.76'	29°55'42"
C8	34.00'	2.81'	04°43'59"
C9	34.00'	14.95'	25°11'43"
C10	24.00'	37.22'	88°50'48"
C11	426.00'	37.93'	05°06'07"
C12	426.00'	107.68'	14°28'57"
C13	426.00'	65.12'	08°45'30"
C14	2026.00'	54.83'	01°33'02"
C15	1974.00'	53.43'	01°33'02"
C16	1974.00'	23.26'	00°40'30"
C17	1974.00'	30.17'	00°52'32"
C18	1974.00'	5.99'	00°10'26"
C19	441.00'	120.12'	15°36'22"
C20	441.00'	96.10'	12°29'07"
C21	441.00'	24.02'	03°07'15"
C22	274.00'	0.81'	00°10'11"
C23	400.00'	75.69'	10°50'33"
C24	400.00'	167.97'	24°03'34"
C25	400.00'	7.93'	01°08'09"
C26	350.00'	5.94'	00°58'21"
C27	2000.00'	54.12'	01°33'02"
C28	400.00'	28.32'	04°03'23"
C29	42.00'	77.00'	105°02'44"
C30	42.00'	5.10'	06°57'23"
C31	250.00'	104.31'	23°54'22"
C32	250.00'	65.60'	15°02'04"
C33	24.00'	37.70'	90°00'00"
C34	42.00'	31.89'	43°30'33"
C35	34.00'	17.60'	29°39'07"

CURVE TABLE			
NO.	RADIUS	LENGTH	DELTA
C36	326.00'	46.55'	08°10'55"
C37	50.00'	17.14'	19°38'26"
C38	50.00'	52.84'	60°33'12"
C39	50.00'	55.55'	63°39'30"

RADIAL TABLE			
NO.	BEARING		
R1	N49°22'26"W		
R2	N46°15'11"W		
R3	N33°46'04"W		
R4	S62°11'38"W		
R5	S61°19'06"W		
R6	S59°12'55"W		
R7	S38°41'09"W		
R8	N88°18'01"W		
R9	S40°03'15"E		
R10	S15°09'13"W		
R11	N81°15'30"W		
R12	S66°18'02"W		
R13	S66°07'52"W		
R14	N59°09'23"W		
R15	N53°24'58"W		
R16	N37°00'40"W		
R17	N44°40'26"W		
R18	N55°54'56"W		
R19	S59°27'40"W		
R20	N74°18'07"W		
R21	S46°44'54"E		
R22	S38°33'59"E		
R23	N50°47'34"E		
R24	N02°41'41"E		
R25	N53°05'37"W		
R26	N66°21'11"E		

LINE TABLE			
NO.	BEARING	DISTANCE	
L1	N65°50'08"E	28.30'	
L2	N65°50'08"E	24.15'	
L3	N19°14'44"W	28.22'	
L4	N78°59'00"W	27.15'	
L5	N78°59'00"W	6.84'	
L6	N64°13'58"W	65.34'	
L7	N64°13'58"W	47.36'	
L8	N70°45'16"E	28.23'	
L9	N12°27'13"E	33.99'	
L10	N71°45'38"W	33.95'	
L11	N29°21'24"W	13.59'	
L12	N29°21'24"W	13.76'	
L13	N27°37'56"W	9.18'	
L14	N65°50'08"E	38.58'	
L15	N24°09'52"W	26.00'	
L16	N64°13'58"W	65.34'	
L17	N17°55'58"E	33.70'	
L18	N68°55'55"W	34.08'	
L19	N24°09'52"W	12.01'	
L20	N13°38'05"E	29.42'	
L21	N12°27'13"E	22.11'	
L22	N12°27'13"E	11.88'	

NO.	BEARING	DISTANCE
L23	N29°21'24"W	61.50'
L24	N29°21'24"W	43.63'
L25	N63°06'18"W	41.20'
L26	N63°06'18"W	24.13'
L27	N24°09'52"W	41.97'
L28	N24°09'52"W	66.26'
L29	N24°09'52"W	1.41'
L30	N65°50'08"E	8.56'
L31	N24°09'52"W	50.00'
L32	N24°09'52"W	3.55'
L33	N65°50'08"E	24.00'
L34	N63°06'18"W	8.56'
L35	N26°53'42"E	19.07'
L36	N65°50'18"W	16.65'
L37	N25°44'30"E	24.15'
L38	N25°44'30"E	24.15'
L39	N18°06'18"W	33.88'
L40	N24°09'52"W	1.00'
L41	N64°13'58"W	28.75'
L42	N63°06'18"W	20.00'
L43	N74°15'10"E	19.19'
L44	N64°13'58"W	21.24'

AMENDED MAP
TRACT NO. 9423
"MISSION RANCH PHASE 5"

BEING A PORTION OF LOT 'B', AS SAID LOT IS SHOWN ON THAT CERTAIN TRACT MAP NO. 9203 ENTITLED "MISSION RANCH - PHASE 3" FILED FOR RECORD ON JUNE 9, 2000 IN BOOK 728 OF MAPS AT PAGES 28-30, SANTA CLARA COUNTY RECORDER'S OFFICE.

AND LYING WITHIN THE
CITY OF MORGAN HILL
STATE OF CALIFORNIA
SEPTEMBER 2003

MH engineering Co.
18075 Vineyard Boulevard
Morgan Hill, CA 95037
99130

FILED THIS 11th DAY OF March 2004 IN BOOK 768 OF MAPS, AT PAGE 22-24

17656455

24

891
h7c
h7c

1768
24
24

768
24
24