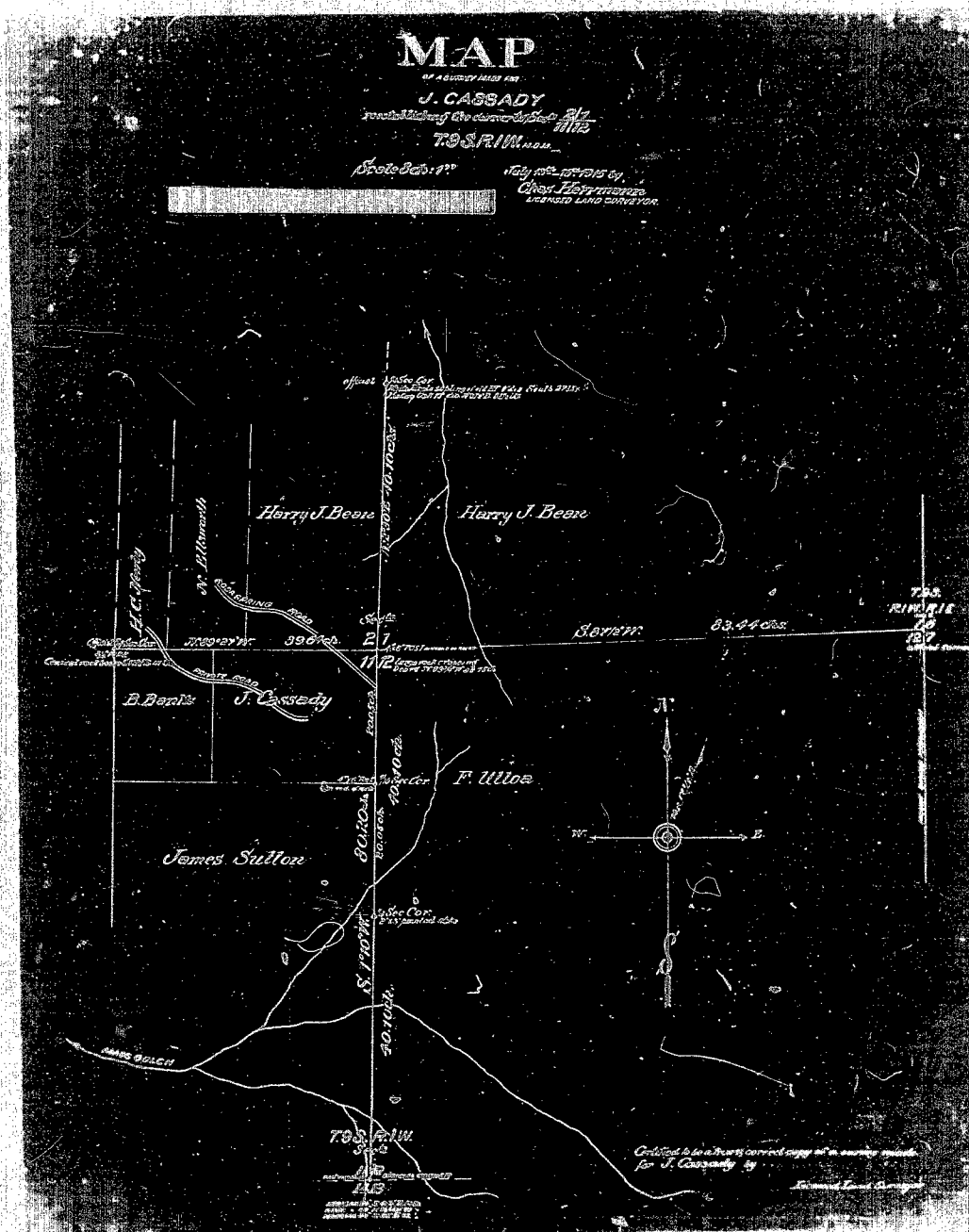


1587



Filed in Back "C" 11/20/00  
page 85

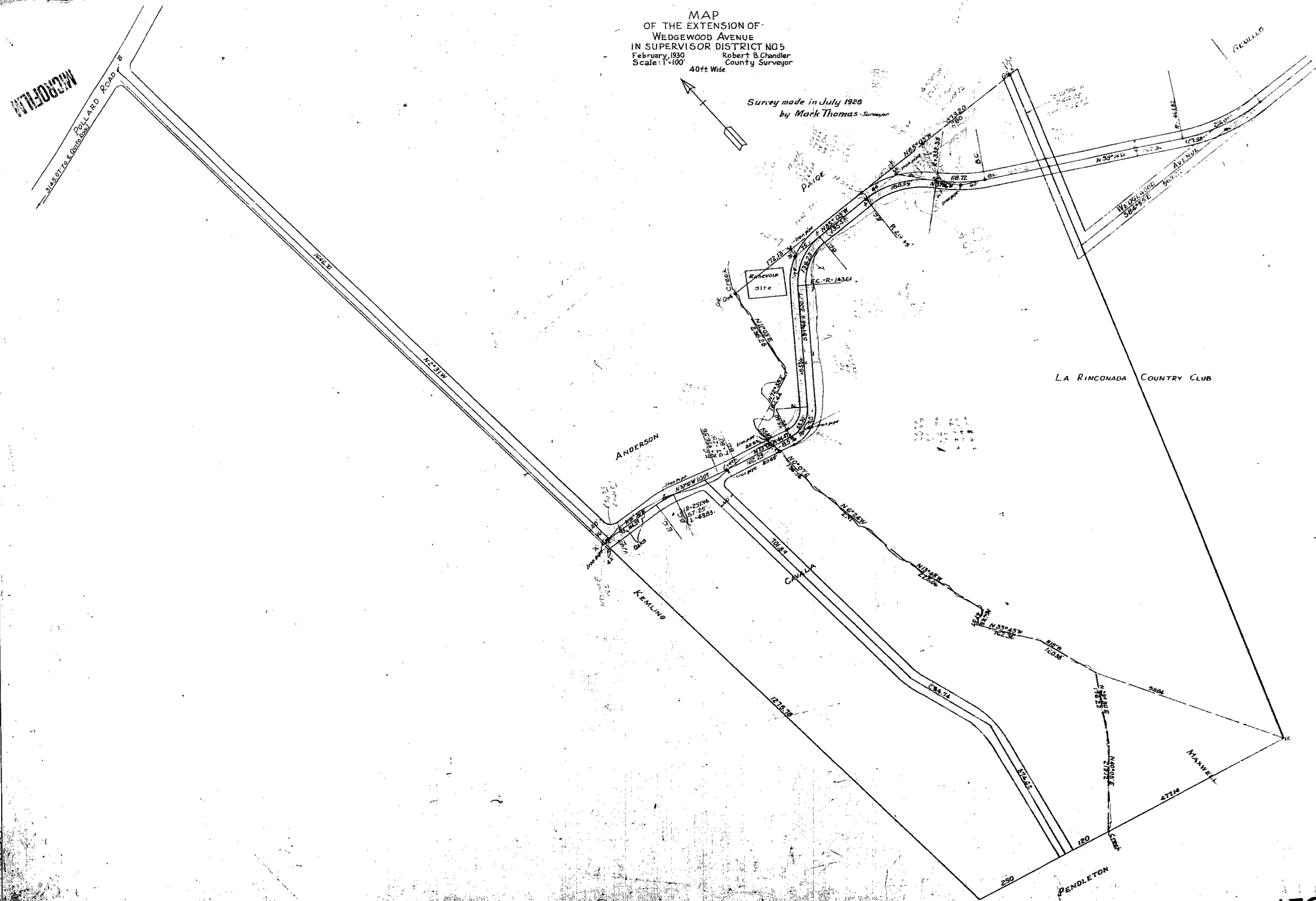
23: See Hermanns Map. 994  
in *Exposition d'ault*

1587

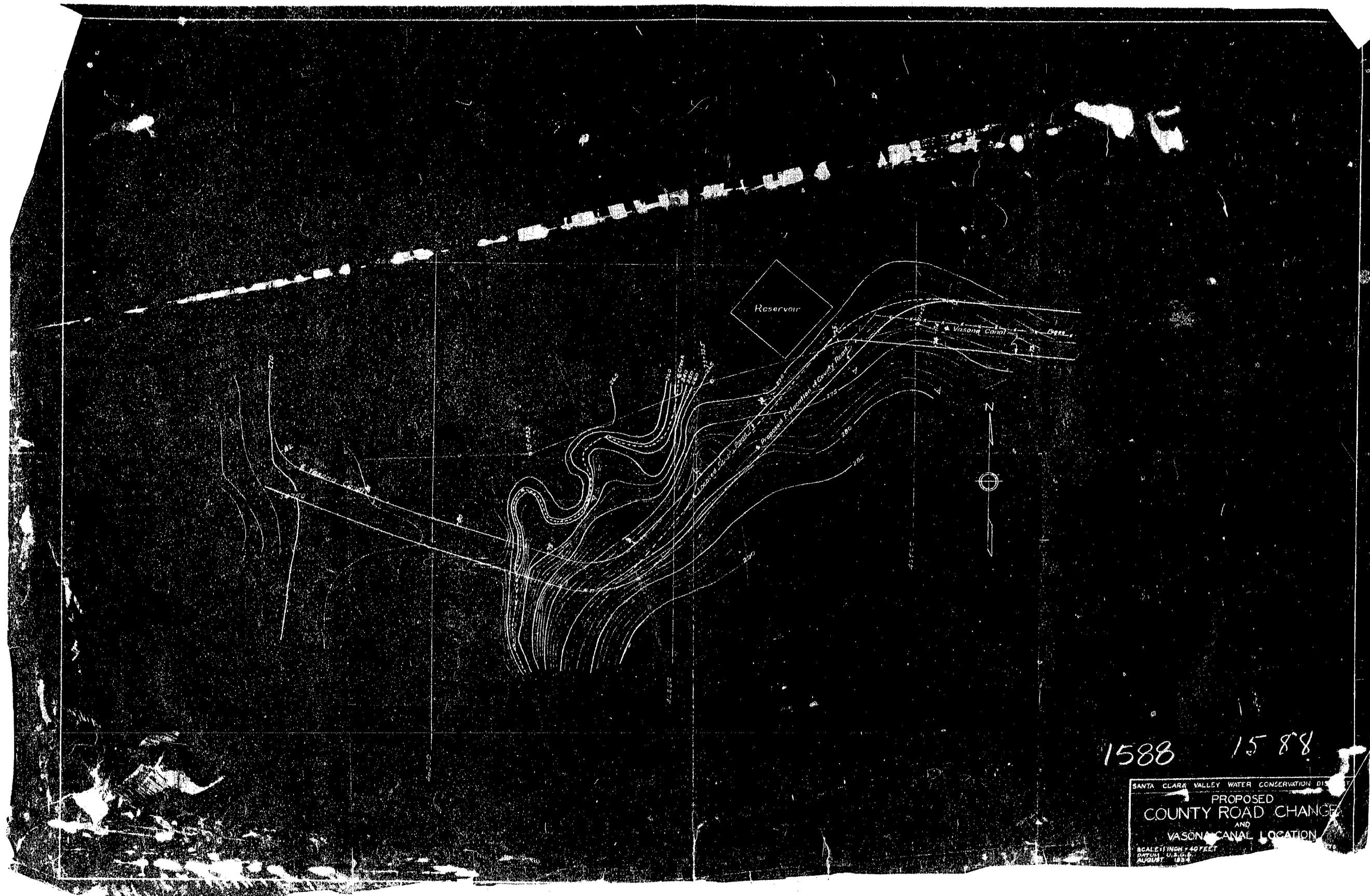
1587

MAP  
OF THE EXTENSION OF  
WEDGEWOOD AVENUE  
IN SUPERVISOR DISTRICT NO 5  
February, 1930  
Scale: 1"=100'  
Robert B. Chandler  
County Surveyor

Survey made in July 1928  
by Mark Thomas Surveyor



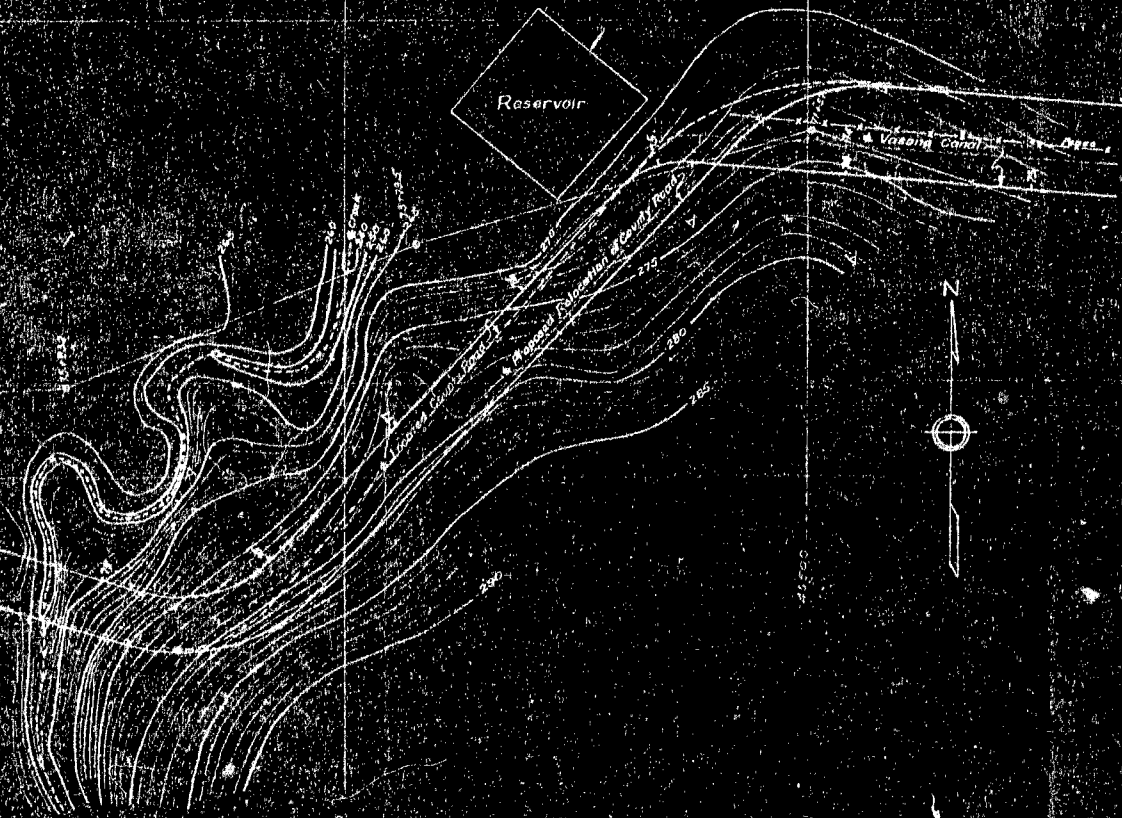
1588



1588

1588

SANTA CLARA VALLEY WATER CONSERVATION DISTRICT  
PROPOSED  
COUNTY ROAD CHANGE  
AND  
VASONA CANAL LOCATION  
SCALE 1" = 40 FEET  
DATE: AUGUST 1954



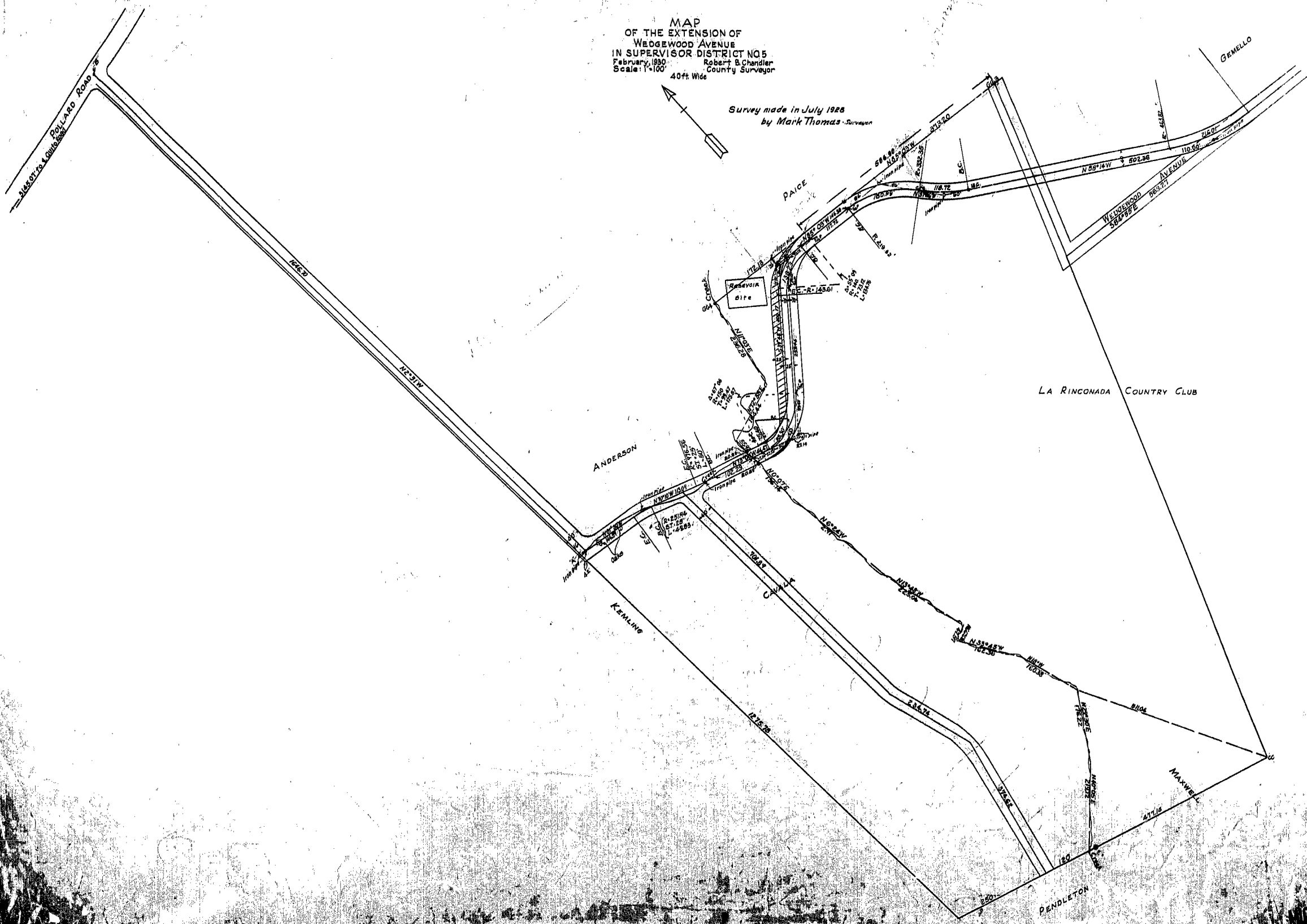
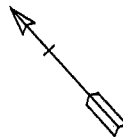
1588. 1588

SANTA CLARA VALLEY WATER CONSERVATION DISTRICT  
PROPOSED  
COUNTY ROAD CHANGE  
AND  
VASONA CANAL LOCATION  
SCALE 1/4 INCH = 40 FEET  
DATUM U.S.C.S.  
AUGUST 1934  
FRED H. THIBETTS  
CHIEF ENGINEER  
SAN FRANCISCO, CALIF.  
DR. JWS  
T.N. C.

MAP  
OF THE EXTENSION OF  
WEDGEWOOD AVENUE  
IN SUPERVISOR DISTRICT NO 5  
February, 1930  
Scale 1"=100'

Robert B. Chandler  
County Surveyor

Survey made in July 1928  
by Mark Thomas - Surveyor

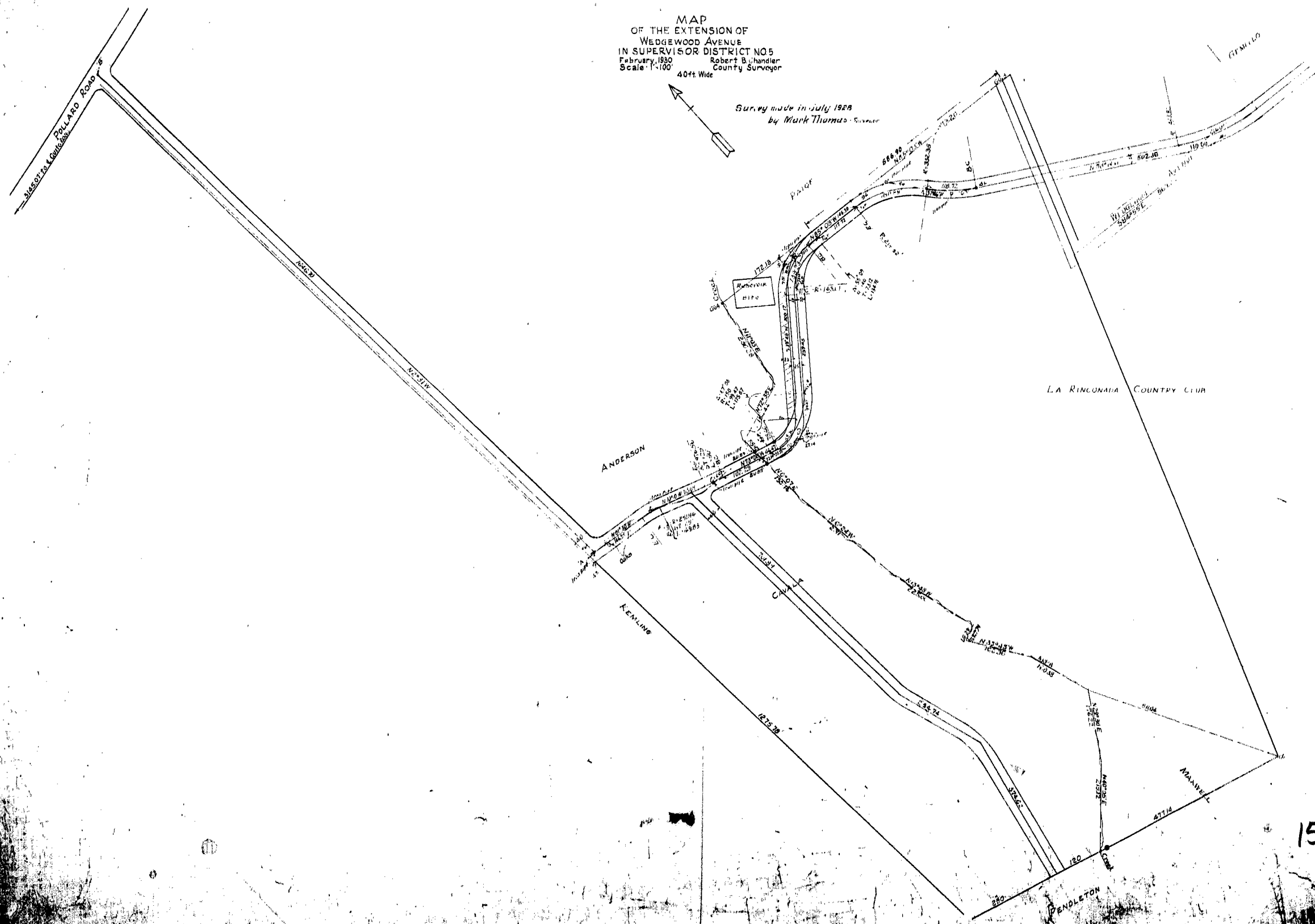




MAP  
OF THE EXTENSION OF  
WEDGEWOOD AVENUE  
IN SUPERVISOR DISTRICT NO 5  
February, 1930 Robert B. Chandler  
Scale 1"=100' County Surveyor



Survey made in July, 1928  
by Mark Thomas, Surveyor



1588