

# RECORD OF SURVEY

SECTION 6 & 7, T. 5 N., R. 11 E. M. D. M.  
AMADOR COUNTY, CALIFORNIA

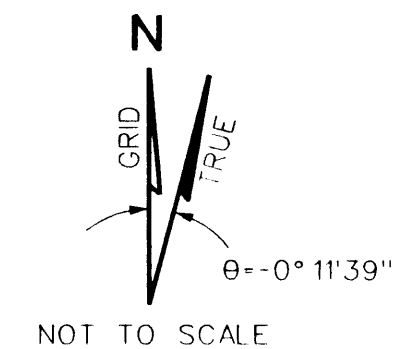
BY  
EAST BAY MUNICIPAL UTILITY DISTRICT

ALAN R. DUBACK, L.S. 4765

SURVEYING SUPERVISOR

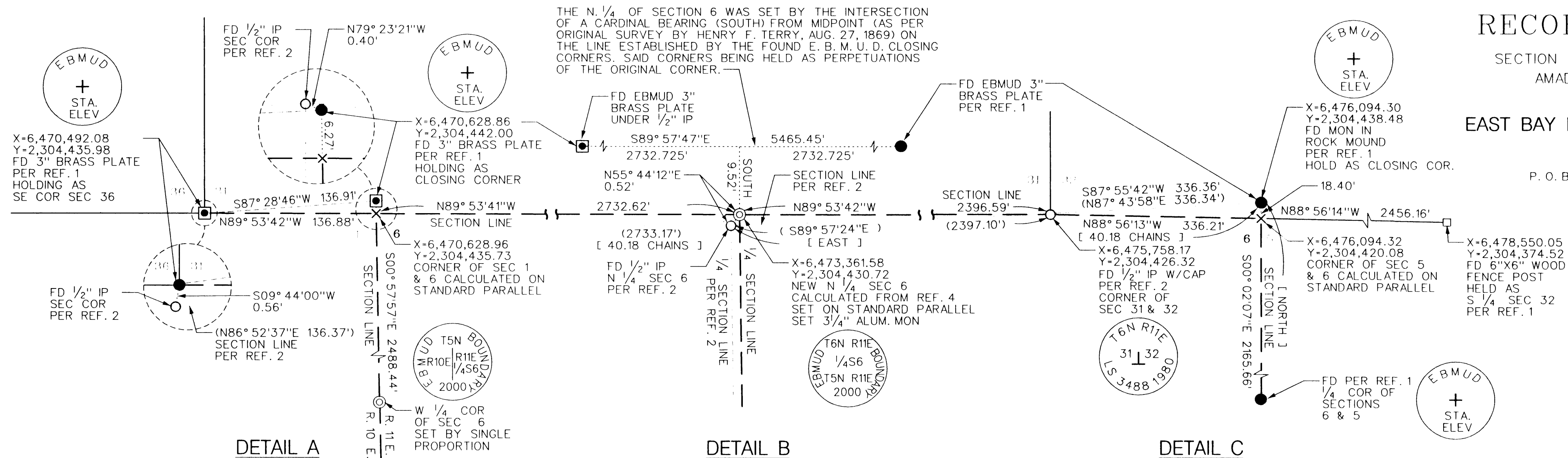
P. O. BOX 24055, OAKLAND, CA 94623

NOVEMBER, 2001



NOT TO SCALE

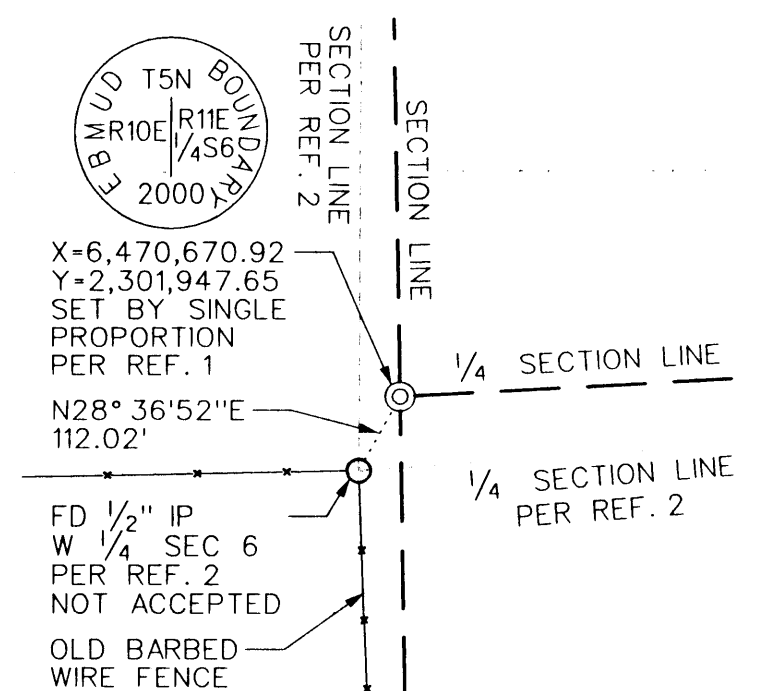
THE N. 1/4 OF SECTION 6 WAS SET BY THE INTERSECTION OF A CARDINAL BEARING (SOUTH) FROM MIDPOINT (AS PER ORIGINAL SURVEY BY HENRY F. TERRY, AUG. 27, 1869) ON THE LINE ESTABLISHED BY THE FOUND E. B. M. U. D. CLOSING CORNERS. SAID CORNERS BEING HELD AS PERPETUATIONS OF THE ORIGINAL CORNER.



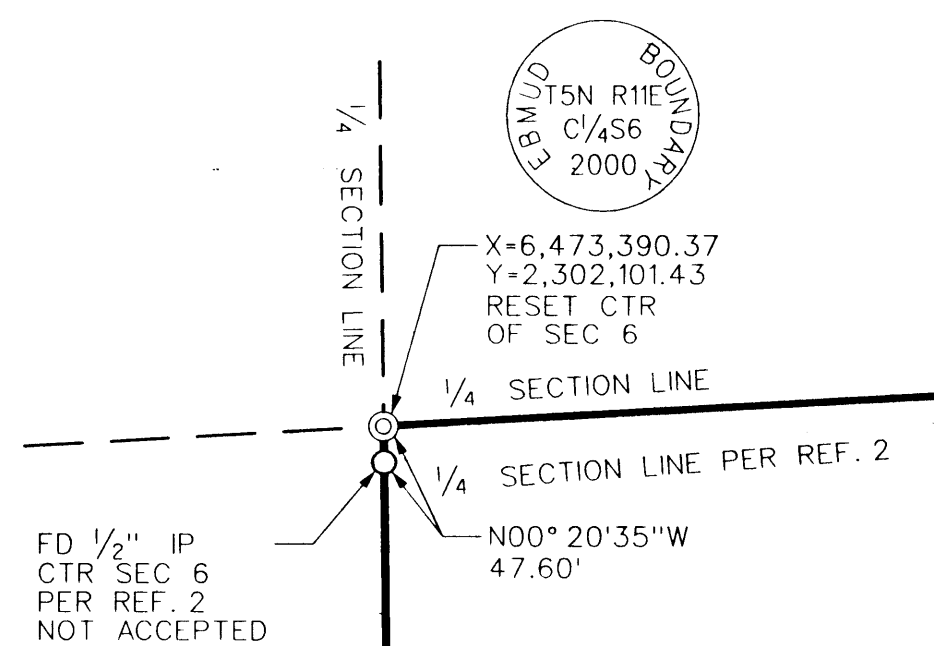
DETAIL A

DETAIL B

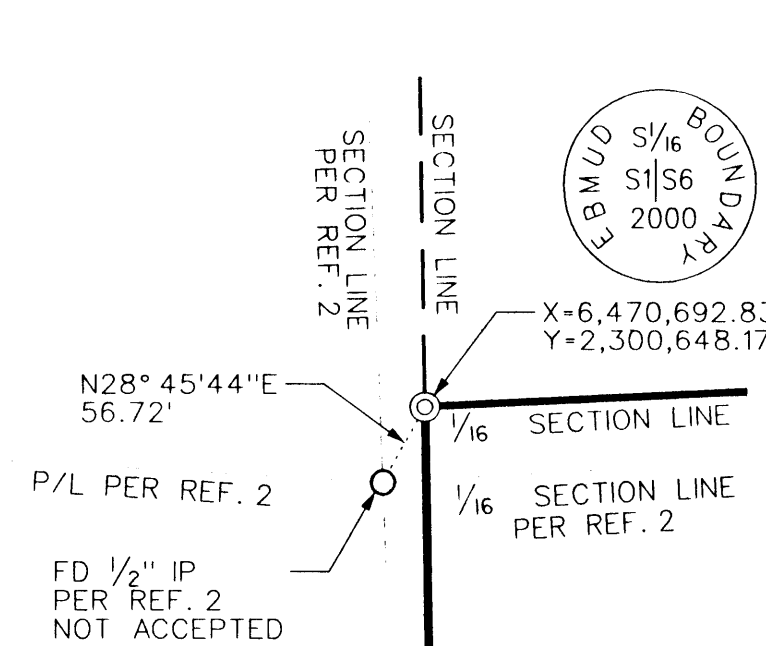
DETAIL C



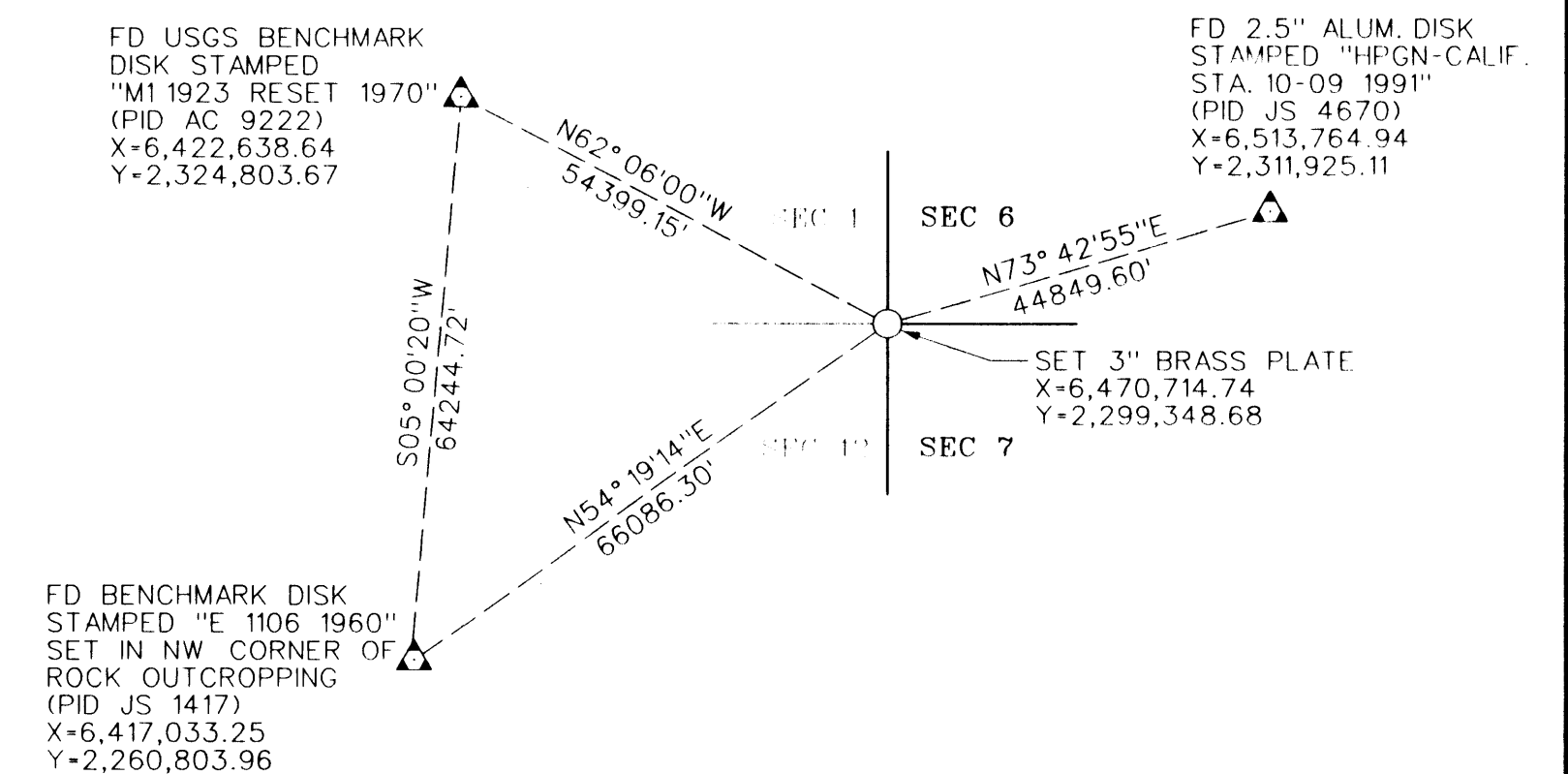
DETAIL D



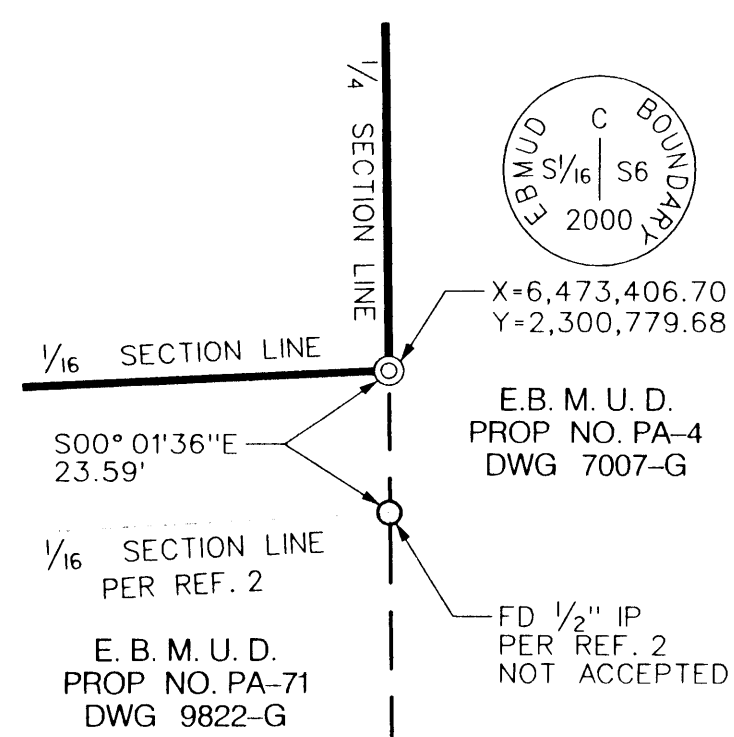
DETAIL E



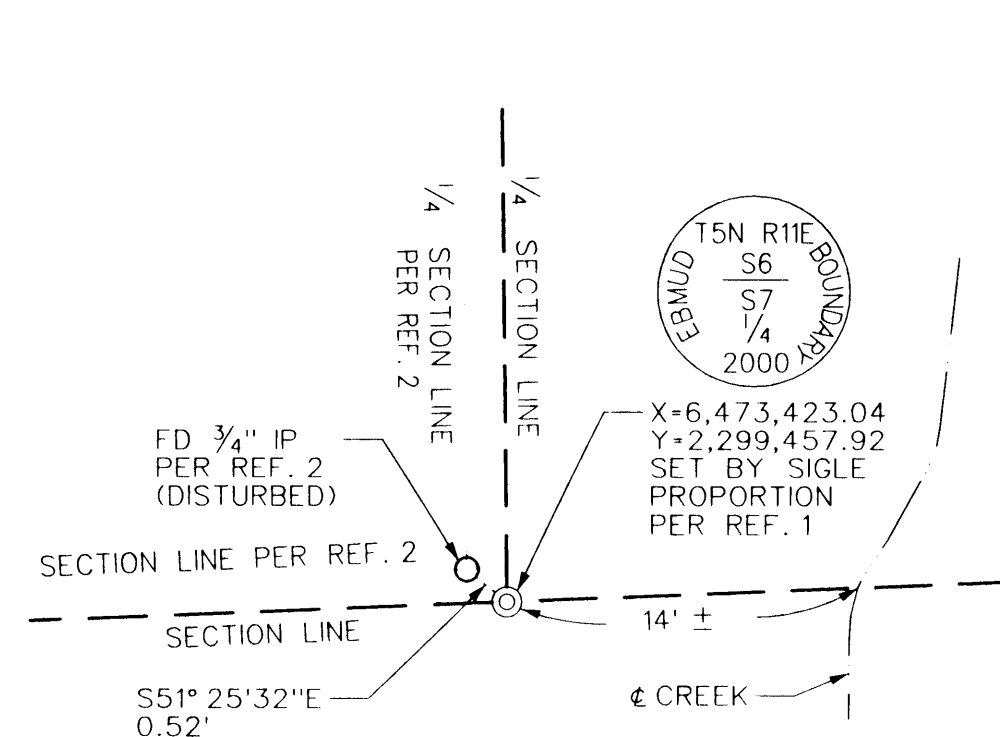
DETAIL F



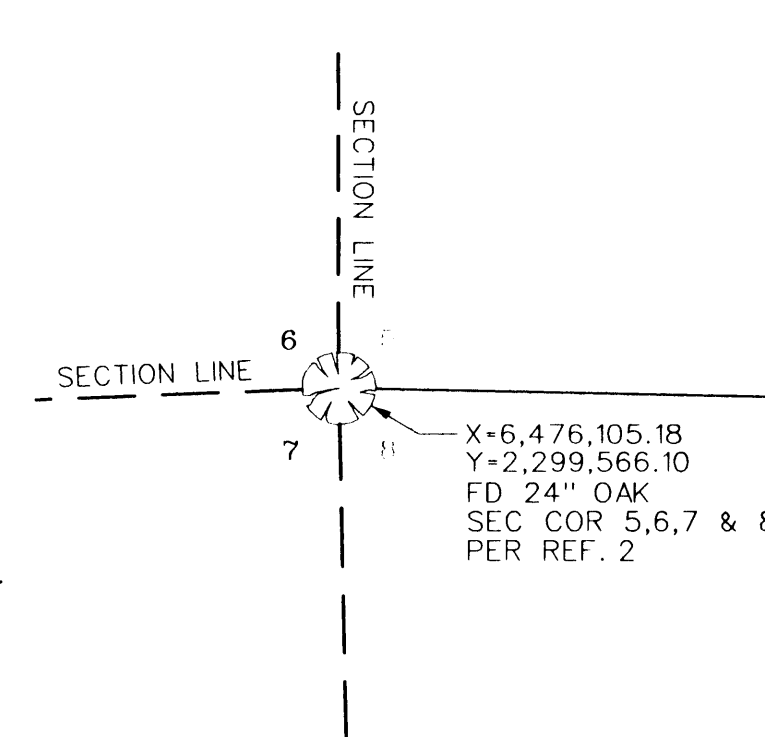
BASIS OF BEARINGS



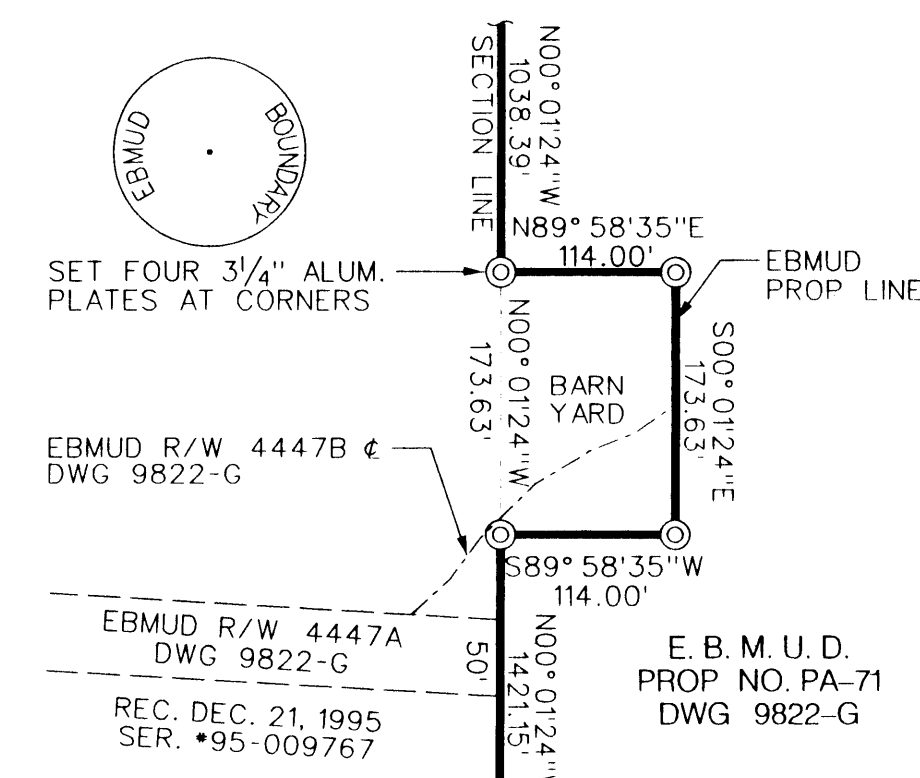
DETAIL G



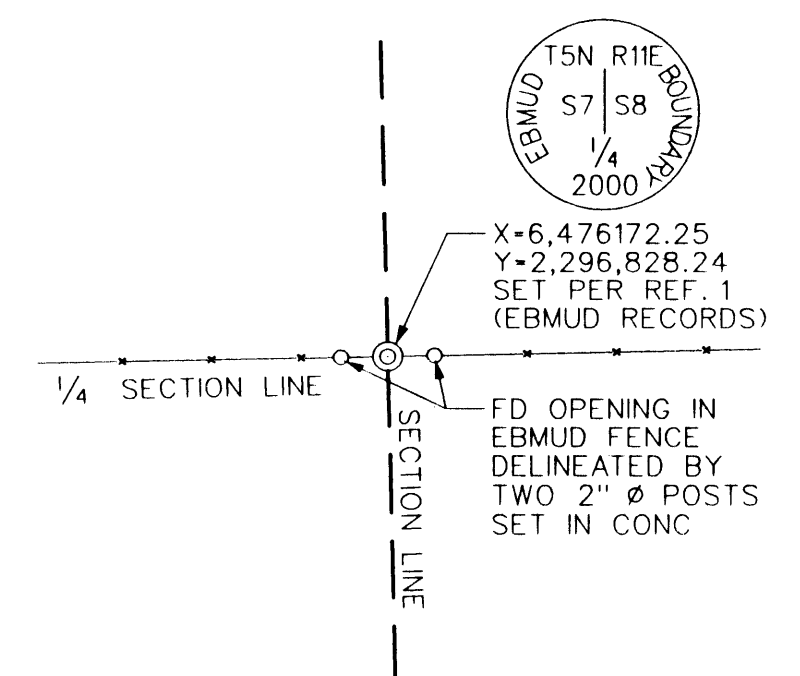
DETAIL H



DETAIL I



DETAIL J



DETAIL K