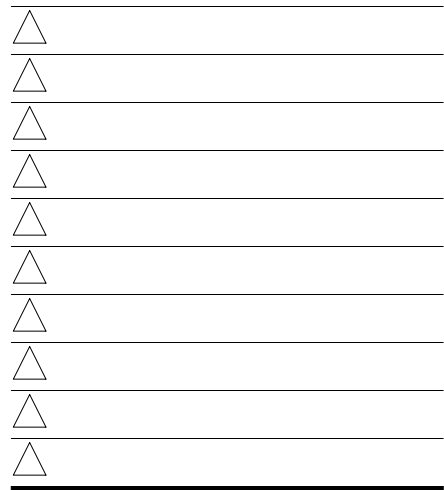




PERMIT/CONSTRUCTION SET

DATE: FEB. 28, 2018



CONTRACT DATE: XX.XX.XX

BUILDING TYPE: EXPLORER LITE 40

PLAN VERSION: DECEMBER 2017

SITE NUMBER: XXX-XXX

STORE NUMBER: XXXXX

TACO BELL

101 MONTGOMERY CROSSING
BISCOE, NC 27209

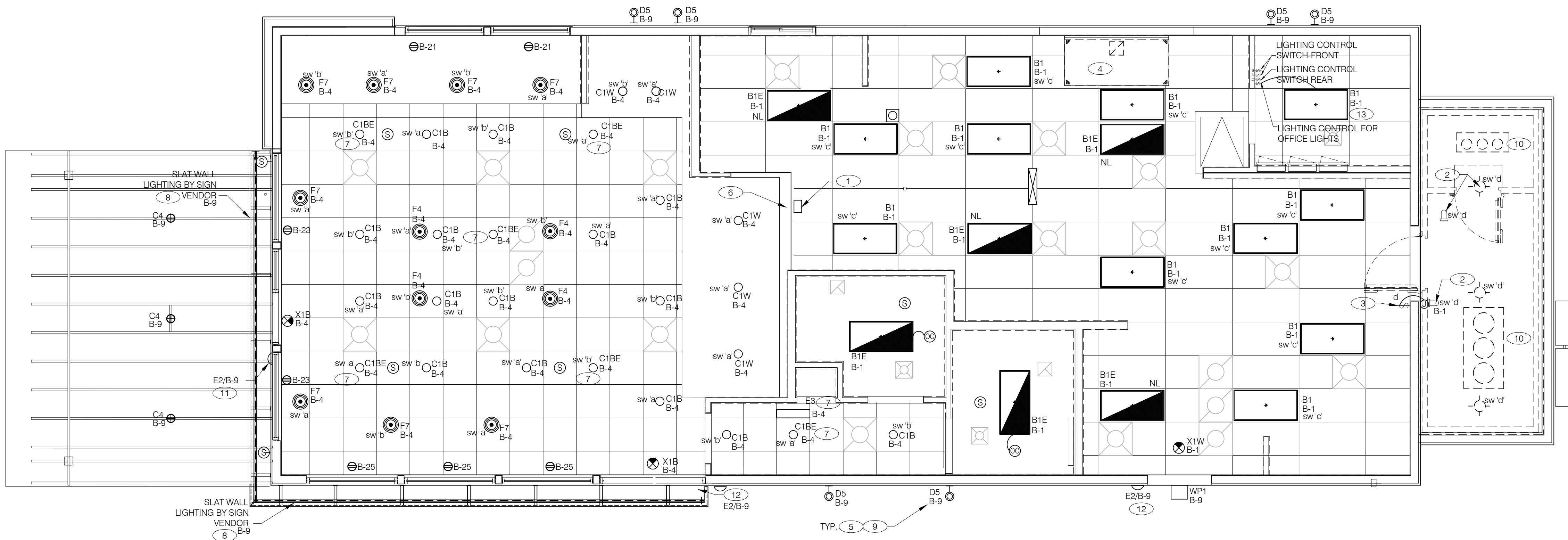


EXPLORER LITE
MEDIUM40

**LIGHTING
PLAN AND
SCHEDULE**

E4.0

PLOT DATE:



CEILING MOUNTED OCCUPANCY SENSOR
FOR RESTROOM LIGHTING. SEE DETAIL
2/E7.0

FURNISHED AS-BUILT DRAWINGS FOR THE POWER SYSTEM
SHALL BE PROVIDED BY THE CONTRACTOR 30 DAYS OF SYSTEM
ACCEPTANCE.

CONTRACTOR SHALL PROVIDE OPERATIONS AND MAINTENANCE
INSTRUCTIONS FOR SYSTEMS AND EQUIPMENT TO THE BUILDING
OWNER OR DESIGNATED REPRESENTATIVE.

GENERAL NOTES

sw INDICATES SWITCH FOR LIGHTING CONTROL. THE
LETTER FOLLOWING INDICATES WHICH SWITCH IN SWITCH
BANK WILL CONTROL LIGHT FIXTURE INDICATED. SEE
3/E3.1 FOR PROPOSED LOCATION OF SWITCH BANK IN
MANAGERS OFFICE. SWITCHING TO BE DOWN STREAM OF
LIGHTING CONTROL PANEL.

GENERAL NOTES

- CONFIRM LIGHTING FIXTURE QUANTITIES WITH SUPPLIER.
- EMERGENCY AND NORMAL LIGHTING MARKED WITH 'NL' SUBSCRIPT SHALL OPERATE CONTINUOUSLY. PROVIDE UNSWITCHED HOT TO NORMAL AND EMERGENCY BALLAST.
- EMERGENCY LIGHTING NOT MARKED WITH 'NL' SUBSCRIPT SHALL OPERATE UNDER CONTROL OF LIGHTING SWITCH AS INDICATED. PROVIDE UNSWITCHED CONSTANT HOT TO EMERGENCY BALLAST AND SWITCHED HOT TO NORMAL BALLAST.
- ALL CONDUITS ENTERING OR LEAVING COOLER/FREEZER SHALL BE PROVIDED WITH SEAL-OFF FITTING WITH COMPOUND PER NEC 300.7(a).
- ALL INTERIOR LIGHTING CIRCUITS TO BE WIRED THRU THE LIGHTING CONTROL RELAYS. SEE SHEETS E6.0 AND E6.1.
- CONTRACTOR TO FIELD VERIFY CEILING TYPE AND PROVIDE PROPER MOUNTING HARDWARE.
- ALL FIXTURES SUPPLIED WITH LAMPS.
- NL INDICATES NIGHT LIGHT

LIGHTING PLAN 1/4"=1'-0"

A

NO.	QTY	LOCATION	MFR / CATALOG NUMBER	DESCRIPTION	#	LAMP	BALLAST	MOUNTING	VOLT	WATT	REMARKS
						TYPE	TYPE	TYPE	HT.		
B1	11	KITCHEN	MAXLITE MLFP-24DE-45-41	2x4 LED FLAT PANEL	-	LED		RECESSED GRID		120	45
B1E	6	RESTROOMS & KITCHEN	MAXLITE MLFP-24DE-45-41-EM	2x4 LED FLAT PANEL	-	LED		RECESSED FLANGE		120	45
E2	3	EXTERIOR	LIGHTALARMS CAM-SD-DB-CW	EXTERIOR EMERGENCY EGRESS FIXTURE	2			WALL	SEE KEY NOTES	120	18
X1W	1	KITCHEN	LIGHTALARMS QLXN500R-N	EXIT SIGN, LED UNIVERSAL MOUNT LED	-			WALL		120	3
X1B	2	DINING	LIGHTALARMS QLXN500R-N, PW-08118-L	EXIT SIGN, LED UNIVERSAL MOUNT LED	-			CEILING		120	3
A	1	SITE LIGHT	HUBBLE VIPER: VPL-96-395-4K7-3-UNV-A-DBT/SES-25-40-1-A-B3-DB	LED AREA LIGHTS FORWARD THROW	1	LED 396W		POLE	27'-6"	120	396
B	4	SITE LIGHT	HUBBLE VIPER: VPL-96-395-4K7-4-UNV-A-DBT/SES-25-40-1-A-B3-DB	LED AREA LIGHTS FORWARD THROW	1	LED 396W		POLE	27'-6"	120	396
E3	1	DINING	EVENLITE PW12-LC-V1-TB	BATTERY BACK-UP/ INVERTER						120	

NO.	QUANTITY	LOCATION	MFR / CATALOG NUMBER	DESCRIPTION	#	LAMP	BALLAST	MOUNTING	VOLT	WATT	REMARKS
						TYPE	TYPE	TYPE	HT.		
C1B	15	DINING	TCP: LED14DR5630KB95 ELITE HOUSING: B6IC-AT-P-CL-BK	RECESSED LED DOWNLIGHT	1	LED		RECESSED DROP CLG		120	14
C1BE	6	DINING	TCP: LED14DR5630KB95 ELITE HOUSING: B6IC-AT-P-CL-BK	RECESSED LED DOWNLIGHT	1	LED		RECESSED DROP CLG		120	14
C1W	5	DINING	TCP: LED14DR5630KB95 ELITE HOUSING: E45180172	RECESSED LED DOWNLIGHT	1	LED		RECESSED HARD CLG		120	14
F4	4	DINING	BASELIGHT CO15/78EXT/59INT/BLC25WINC MAX	DINING ROOM PENDANT	1	11W LED A19 LAMP	NA	PENDANT	BOT. @ 6'-0" A.F.F.	120	11
F7	8	DINING	HI-LITE H-15114-96/CB8-96/INC	DINING ROOM PENDANT	1	11W LED A19 LAMP		PENDANT	6'-0" A.F.F.	120	60
D5	6	EXTERIOR WALL (LED OPTION)	PROGRESS LTG - P5642-20 LENS P8798-31	BRONZE 6" UP/DOWN CYL.	2	(2) TCP L14PAR38 D30KFLW			CENTER OF BRACKET AT 9'-2" A.F.F.	120	36
C4	3	PATIO	SPECTRUM LIGHTING SPC0340INC-PAR20-SM-MB	LED PENDANT	1	(1) SOLAIS LR20/40/27K/975/BK		PENDANT		120	12
WP1	1	EXTERIOR WALL	LUMARK (EATON) LDWP-GL-3B-120V	LED WALL PACK	1	LED		WALL	8'-6"	120	27

LIGHTING FIXTURE SCHEDULE

C

KEY NOTES

B

- ALERT LIGHT - ONLY APPLIES WHEN A GEN IV POWER SOAK IS USED. DISREGARD IF GEN III POWER SOAK IS USED. VERIFY REQUIREMENTS WITH MANUFACTURER AND EQUIPMENT PROVIDED IN FIELD.
- FOR LIGHTING FIXTURES, CONDUIT, CONDUCTORS AND INSTALLATION RESPONSIBILITIES, REFER TO SCOPE OF WORK.
- FIXTURE AND SWITCH FACTORY INSTALLED WITH UNIT. G.C. TO COMPLETE CIRCUITING.
- EXHAUST HOOD LIGHT FIXTURES SUPPLIED WITH HOOD AND MTD IN PRE-WIRED J-BOX. COMPLETE CIRCUITING PER DETAILS ON SHEETS E6.0 AND E6.1.
- COORD. J-BOX LOCATION WITH WOOD FRAMING SO IT REMAINS CONCEALED BEHIND FIXTURE. SEE ARCHITECTURAL ELEVATIONS FOR MORE INFORMATION. WIRE VIA EXTERIOR LIGHTING CONTRACTOR. SEE DETAILS ON SHEETS E6.0 AND E6.1.
- SEE SHEET E3.0 AND DETAIL 6/E7.0 FOR CIRCUITING AND ROUGH-IN INFORMATION. VERIFY ROUGH-IN. G.C. TO MAKE FINAL CONNECTION.
- C1BE FIXTURES CIRCUITED THROUGH 'E3' INVERTER ON CIRCUIT INDICATED ON PLAN. LOCATION ON PLAN SHOWN FOR REFERENCE ONLY. COORDINATE LOCATION OF INVERTER WITH OWNER. CIRCUIT INVERTER SO THAT SWITCHING AND TIMELOCK CONTROLS DO NOT CAUSE FALSE TRIPPING OF THE INVERTER. SEE MANUFACTURERS WIRING DIAGRAM FOR MORE INFORMATION.
- PROVIDE ROUGH-IN AND FINAL CONNECTION FOR LED POWER SUPPLIES INTEGRATED INTO SLAT WALL AS REQUIRED. QUANTITY AND LOCATIONS SHOWN FOR REFERENCE ONLY. SEE ARCHITECTURAL WALL SECTION SHEETS FOR MORE INFORMATION. VERIFY EXACT LOCATION, QUANTITY OF POWER SUPPLIES, ADDITIONAL EQUIPMENT REQUIREMENTS, ETC. WITH EQUIPMENT PROVIDER AND CONDITIONS IN FIELD PRIOR TO COMMENCING WORK. WIRE VIA EXTERIOR LIGHTING CONTRACTOR. SEE DETAIL 4/E6.0.
- REFER TO ARCHITECTURAL EXTERIOR ELEVATIONS ON A4.0 AND A4.1 FOR MORE INFORMATION.
- SEAL ALL ELECTRICAL CONDUITS INTO THE WALK-IN COOLER.
- MOUNT 'E2' AT 8'-6" A.F.G. TO CENTER OF FIXTURE.
- MOUNT 'E2' AT 8'-0" A.F.G. TO CENTER OF FIXTURE.
- OFFICE LIGHT TO BE WIRED THROUGH SEPARATE CONTACTOR THAN REST OF LIGHTS ON CIRCUIT. SEE DETAIL ON SHEET E6.1 FOR MORE INFORMATION.