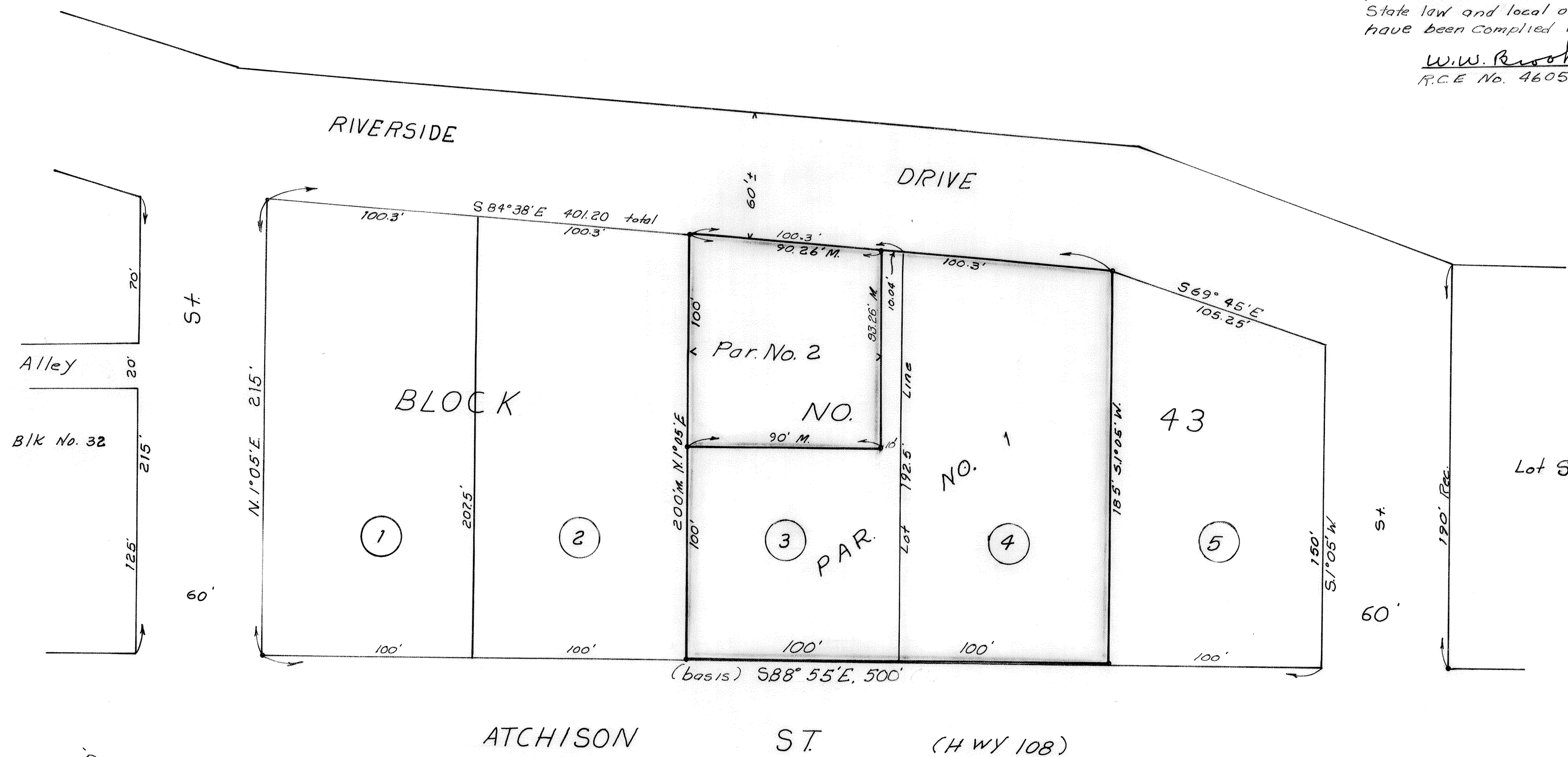


This Map has been Examined This 17th Day of Feb 1968 For Conformance With the Requirements of Section 11575 of The Subdivision Map Act.
By: W. W. Brookey
City Engineer

This Map was Prepared by me or under my direction and was Compiled From Record data and based upon a Field Survey, in Conformance with the requirements of the Subdivision Map Act at the request of Mrs. L. Staley in Feb. 1968. I hereby certify that it conforms to the approved tentative Map and the provisions of approval thereof; that all provisions of applicable State law and local ordinances have been complied with.

W. W. Brookey
R.C.E. No. 4605



PARCEL MAP

Being a Division of Lot 3 in Block No 43, in City of RIVERBANK, CALIF.

Scale 1" = 40 Ft. Feb. 1968

3/4" Pipes Set at corners to Parcels 1 and 2 other pipes Pd.

Prepared by W.W. Brookey R.C.E. 4605

All distances and bearings From Eastern Addition To Town of Riverbank Map Vol 7 pg. 30 and Revised Map of Town of Riverbank Maps Vol. 5 pg. 16

Checked by: Miss E. Deatrick
R.C.E. 6693

Filed For Record This 19 Day of Feb. 1968 at 1:00 P.M. In Book 5 of Parcel Maps, at Page 8, at the request of the Riverbank City Engineer.
Fee \$5.00

Instrument No. 5476
Steve R. Nelson
County Recorder
By: Refrence Asst. Recorder