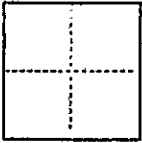


CORNER RECORD

CR 225

COUNTY OF Alameda T. 15 R. 3W Mt. Diablo MERIDIAN CALIFORNIA
CORNER TYPE: GOV'T. CORNER ☐ MEANDER ☐ RANCHO ☐ CONTROL ☐ OTHER ☒
CORNER IDENTIFICATION — DATE OF VISIT January 19 93



SURVEY OF LOT CORNERS LOT 43, 48 MAPS 45.

CORNER — LEFT AS FOUND ☐ FOUND AND TAGGED ☐ REESTABLISHED OBLITERATED CORNER ☐ REBUILT ☐

PHYSICAL DESCRIPTION OF CORNER FOUND; EVIDENCE AND METHOD USED TO IDENTIFY OR REESTABLISH

FOUND EXISTING STANDARD ALAMEDA COUNTY STREET MONUMENTS ON THE CENTERLINE OF FAIRLANE DRIVE AS SHOWN BELOW, ESTABLISHED LOT CORNERS PER RECORD DATA.

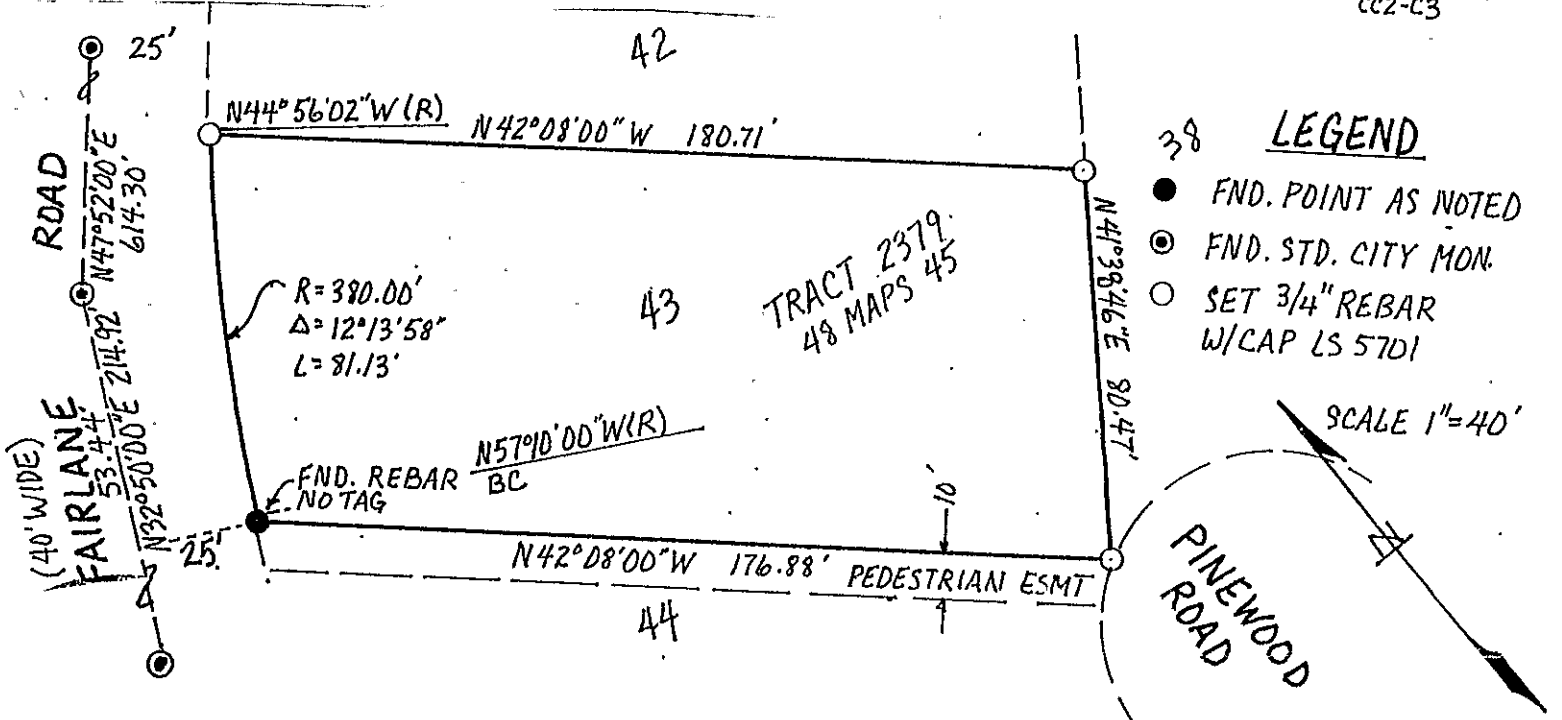
PHYSICAL DESCRIPTION OF MONUMENTS REBUILT OR PERPETUATED

SET 3/4" REBAR W/PLASTIC CAP L.S. 5701 AS SHOWN BELOW.

CALIFORNIA COORDINATE SYSTEM ORDER: FIRST ☐ SECOND ☐ THIRD ☐
STATIONS USED: NGS (USC & GS) ☐ STATE ☐ COUNTY ☐ OTHER ☐ STATION _____ STATION _____
ZONE III ELEVATION _____ NORTHINGS (Y) _____ EASTINGS (X) _____

(Fold)

SKETCH: (Include reference tie or witness points, remarks and topo of area)

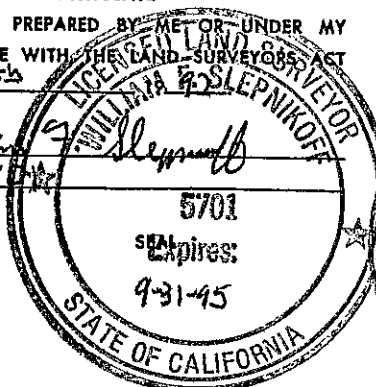


SURVEYOR'S CERTIFICATE

THIS CORNER RECORD WAS PREPARED BY ME OR UNDER MY DIRECTION IN CONFORMANCE WITH THE LAND SURVEYORS ACT ON November 20th

SIGNED: William R. Shepp

L.S. or R.C.E. No.: LS 5701



COUNTY SURVEYOR'S CERTIFICATE

THE CORNER RECORD WAS RECEIVED 12-09 19 92 AND EXAMINED AND FILED 12-31 19 93

BY: Russell R. Pearlman DEPUTY COUNTY SURVEYOR

DOCUMENT NO. 138728 STATEMENT OF 37 OF SHEET BK 2 C.R. PG 69

YES ☐ NO ☒