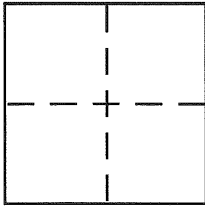


**CORNER RECORD**Document Number CR 1310City of Unincorporated Eden Twp.County of Alameda, CaliforniaBrief Legal Description LOTS 53 & 54, BLOCK C, HILLCREST KNOLLS  
Filed Jan. 13, 1925, BK. 4 Maps, Pg 56**CORNER TYPE**

Government Corner ☐ Control ☒  
 Meander ☐ Property ☒  
 Rancho ☐ Other ☐  
 Date of Survey 01/06/2000

**COORDINATES (Optional)**

N. \_\_\_\_\_  
 E. \_\_\_\_\_  
 Zone \_\_\_\_\_ NAD27 ☐ NAD83 ☐  
 NAD83 Epoch \_\_\_\_\_  
 Elev. \_\_\_\_\_  
 Vert. Datum: NGVD29 ☐ NAVD88 ☐  
 Meas. Units: Metric ☐ Imperial ☐

Corner – Left as found ☐ Found and tagged ☐ Established ☒ Reestablished ☐ Rebuilt ☐

Identification and type of corner found: Evidence used to identify or procedure used to establish or reestablish the corner:

Held record relationship of lines marked with that  
course indicated as "Basis of Bearings and Proration"  
as per map of Hillcrest Knolls (See Page 2)

A description of the physical condition of the monument as found and as set or reset: See Legend (Page 2)

**SURVEYOR'S STATEMENT**

This Corner Record was prepared by me or under my direction in conformance with

the Land Surveyor's Act on Jan. 07, 2000

Signed Gordon Lee Glenn P.L.S. or R.C.E. No. 5666

**COUNTY SURVEYOR'S STATEMENT**

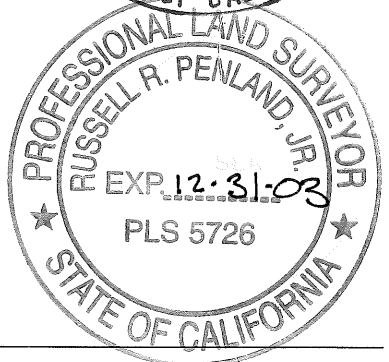
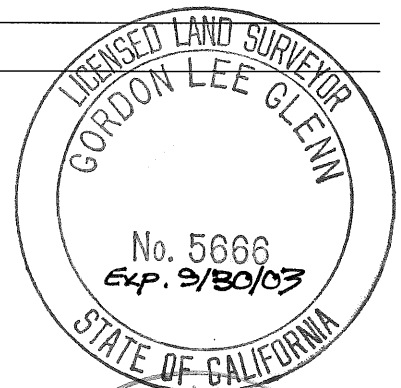
This Corner Record was received 1-18-2000

and examined and filed 2-17-2000

Signed Russell R. Penland, Jr. P.L.S. or R.C.E. No. 5726

Title Deputy County Surveyor

County Surveyor's Comment \_\_\_\_\_



# LEGEND:

Found railroad spike w/punch  
set in 2"  $\phi$  iron pipe down 2'  $\pm$  (1)

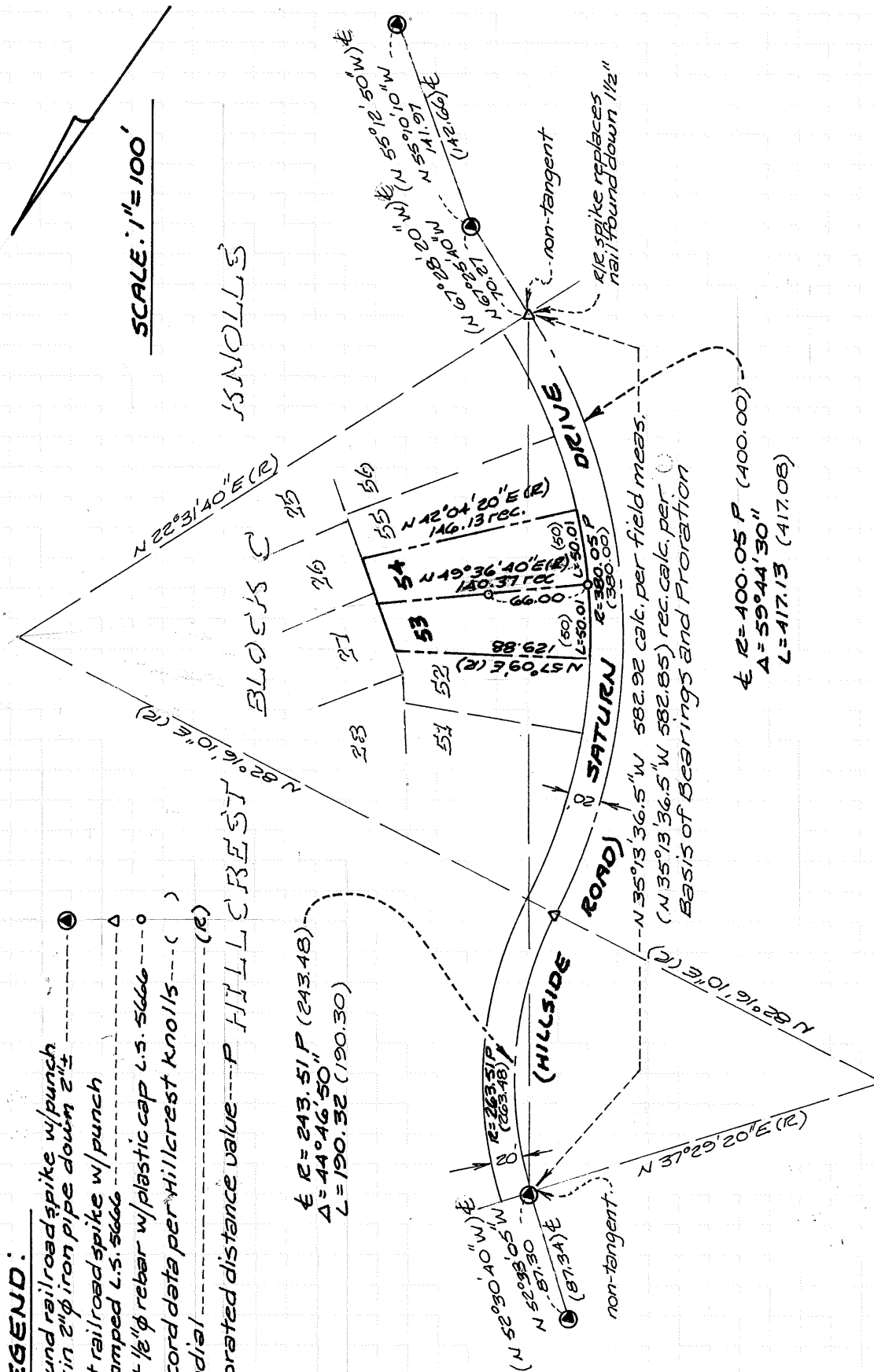
Set railroad spike w/punch  
stamped U.S. 5666 (2)

Set 1/2"  $\phi$  rebar w/plastic cap U.S. 5666 (3)

Record data per Willcrest knolls (4)

Radial (5)

prorated distance value ---P HILLcrest

$$\begin{aligned} \epsilon R &= 243.51 P \quad (243.48) \\ \Delta &= 44^{\circ} 46' 50'' \\ L &= 190.32 \quad (190.30) \end{aligned}$$


$R = 400.05 P$  (40)  
 $A = 59^{\circ} 44' 30''$   
 $L = 417.13$  (417.08)

25166 ou 907 N 35

G. Glenn