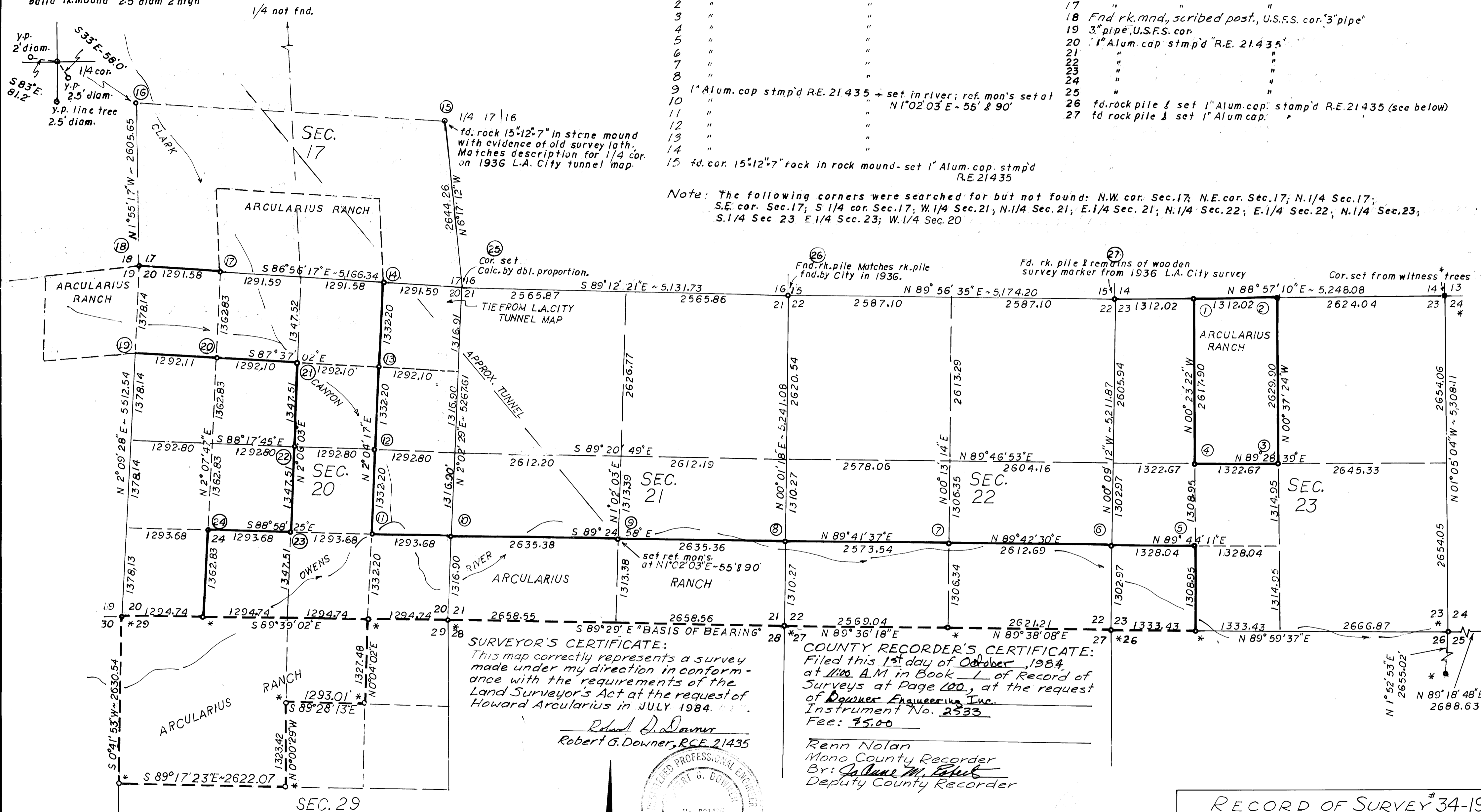


fd. 2 brng. trees as per orig. record. set 1" Alum. cap build rk. mound 2.5' diam 2' high

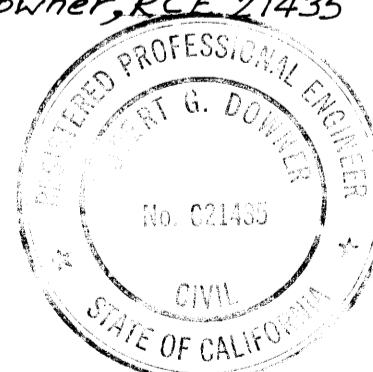


Note: Dimensions along heavy, dashed lines are the record dimensions as shown on R/S No. 36-29. Corners marked with an asterisk (\*) are described on R/S No. 36-29.

Basis of Bearing:

The basis of bearing for this map is the north line of Sec. 28, T.2S., R.28E., M.D.B. & M., N 89°29'W, as shown on the official plat of this township, filed in the Surveyor General's Office in San Francisco, Cal., Dec. 2, 1879.

T.2S. R.28E.  
M.D.B. & M.



RECORD OF SURVEY #34-19  
MAP OF  
NORTH BOUNDARY OF  
ARCULARIUS RANCH  
LOCATED IN T.2S., R.28E.  
M.D.B. & M., MONO COUNTY, CAL.  
DEED REF. Doc. #3465, VOL. 122, P. 111  
SCALE: 1" = 1000'  
Aug., 1984