

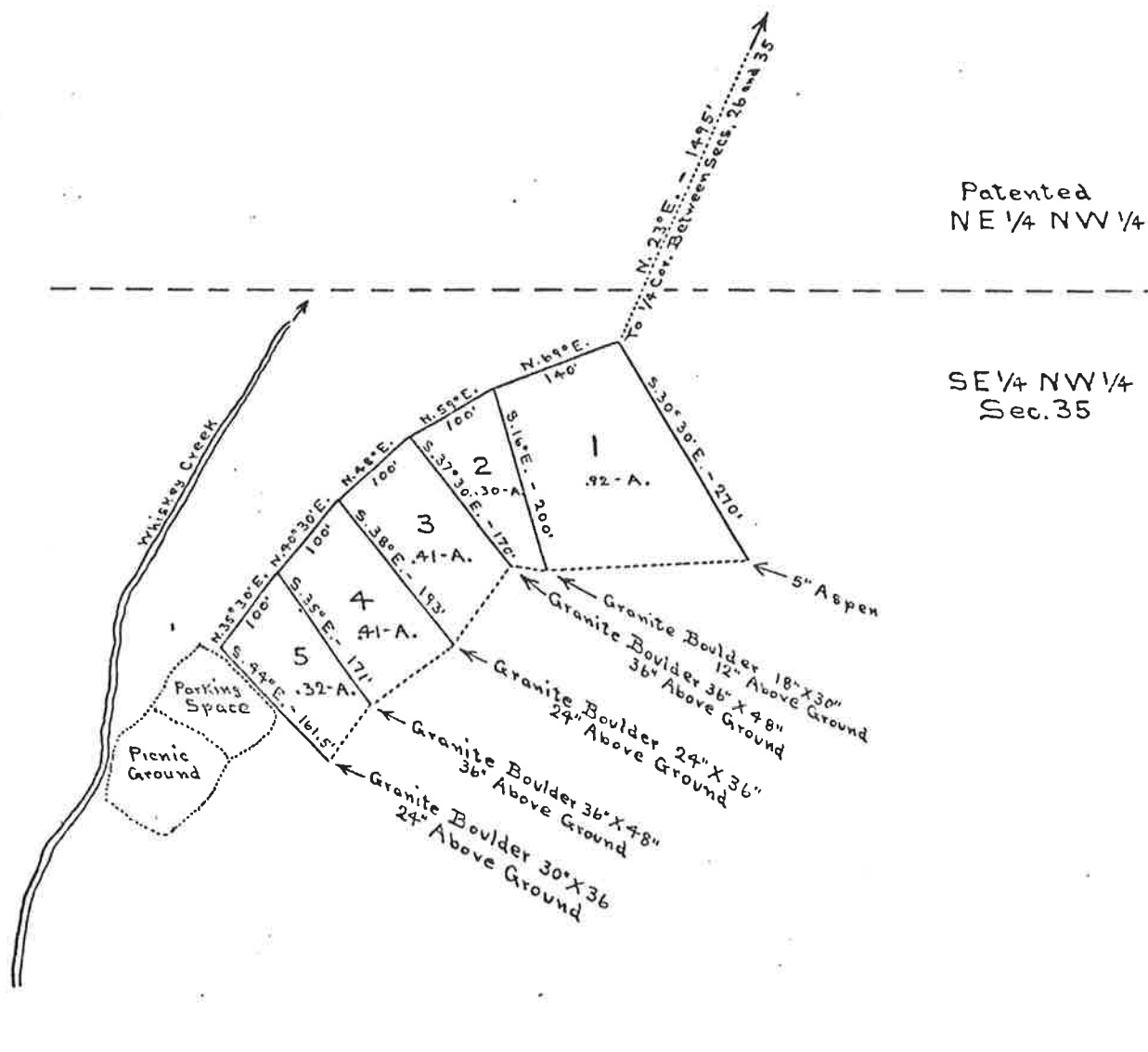
Whiskey Creek TractNo. of Lots 4 Mapped 1934Water System Installed By PermitteesRoad Built By CountyElectrical Service Available Telephone AvailableAccess Off of Placer Road, a gravel maintained County road.Lots Front On Overlooking Highway 395 and Crowley LakeTerrain In Subdivision Sloping sidehill overlooking Crowley Lake and Highway 395. Tree growth mostly consists of Aspens.

Comments *Water system consists of a community well and pump maintained by the Permittees. According to Lahontan Regional Water Control Board a sewer system must be installed and be operating by January 1, 1985. At the present the cabins are on septic tanks.

U. S. DEPARTMENT OF AGRICULTURE
FOREST SERVICE
INYO NATIONAL FOREST
ROCK CREEK RECREATION AREA
WHISKEY CREEK TRACT
Sec. 35 T. 4 S. R. 29 E. M. D. M.
CALIFORNIA
SHEET 1

Uses-Inyo
Compass Survey, Lots 1 to 5
By Simpson and Robinson, 4-10-34

Scale: 1 inch = 100 feet.
Mag. Decl. 17° E.



U. S. DEPARTMENT OF AGRICULTURE
FOREST SERVICE
INYO NATIONAL FOREST
ROCK CREEK RECREATION AREA
WHISKEY CREEK TRACT
Sec. 35 T. 4 S. R. 29 E. M. D. M.
CALIFORNIA
SHEET 1

Uses-Inyo
Compass Survey, Lots 1 to 5
By Simpson and Robinson, 4-10-34

Scale: 1 inch = 100 feet.
Mag. Decl. 17° E.

