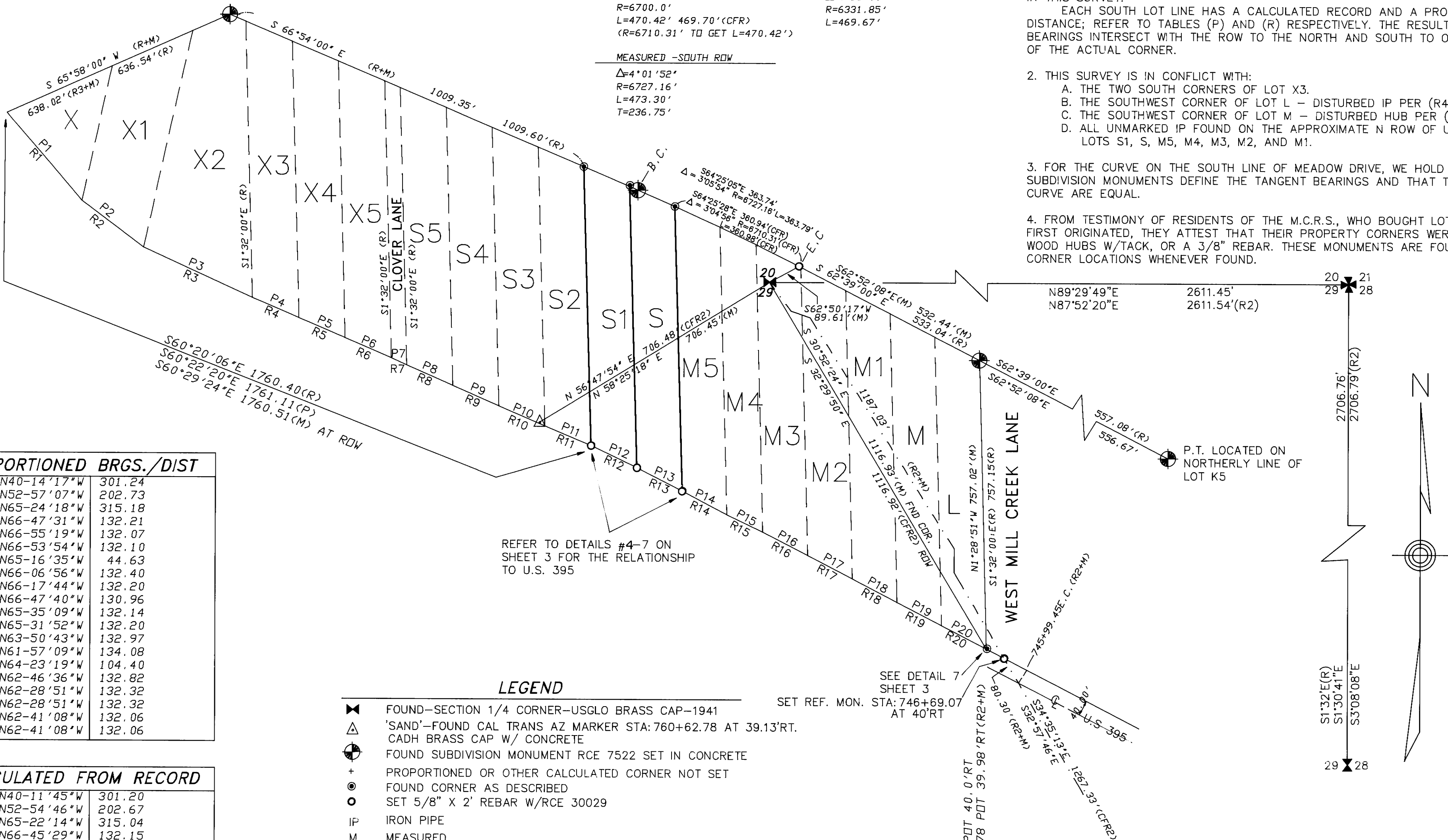


MEADOW DRIVE CURVE DATA

RECORD (R)-SOUTH ROW	FROM SUBDIVISION MAP BEARINGS
$\Delta=4^{\circ}01'00''$	$\Delta=4^{\circ}15'00''$
$R=6700.0'$	$R=6331.85'$
$L=470.42' \ 469.70' \text{ (CFR)}$	$L=469.67'$
$(R=6710.31' \text{ TO GET } L=470.42')$	
MEASURED -SOUTH ROW	
$\Delta=4^{\circ}01'52''$	
$R=6727.16'$	
$L=473.30'$	
$T=236.75'$	

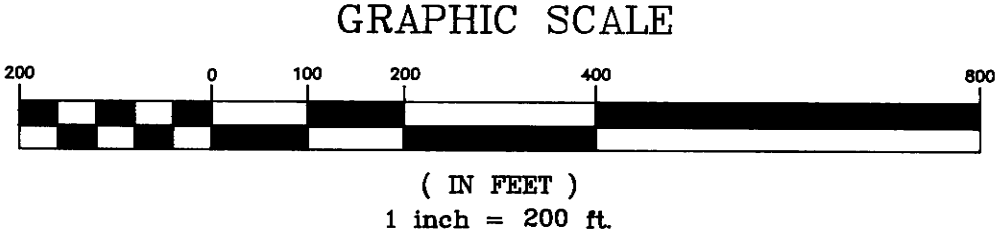
- NOTES:
1. WE HOLD THAT THE SUBDIVISION MONUMENTS ON THE SOUTH LINE OF MEADOW DRIVE, THE WELL DEFINED N-S LOT BEARINGS AND THE SENIOR RIGHT OF U.S. 395 (R2) CONTROL IN THIS SURVEY.
EACH SOUTH LOT LINE HAS A CALCULATED RECORD AND A PROPORTIONED BEARING AND DISTANCE; REFER TO TABLES (P) AND (R) RESPECTIVELY. THE RESULTING SIDE LOT BEARINGS INTERSECT WITH THE ROW TO THE NORTH AND SOUTH TO OBTAIN THE POSITION OF THE ACTUAL CORNER.
 2. THIS SURVEY IS IN CONFLICT WITH:
A. THE TWO SOUTH CORNERS OF LOT X3.
B. THE SOUTHWEST CORNER OF LOT L - DISTURBED IP PER (R4).
C. THE SOUTHWEST CORNER OF LOT M - DISTURBED HUB PER (R4).
D. ALL UNMARKED IP FOUND ON THE APPROXIMATE N ROW OF U.S. 395 LOTS S1, S, M5, M4, M3, M2, AND M1.
 3. FOR THE CURVE ON THE SOUTH LINE OF MEADOW DRIVE, WE HOLD THAT THE FOUND SUBDIVISION MONUMENTS DEFINE THE TANGENT BEARINGS AND THAT THE TANGENTS OF THE CURVE ARE EQUAL.
 4. FROM TESTIMONY OF RESIDENTS OF THE M.C.R.S., WHO BOUGHT LOTS WHEN THEY WERE FIRST ORIGINATED, THEY ATTEST THAT THEIR PROPERTY CORNERS WERE REPRESENTED AS WOOD HUBS W/TACK, OR A 3/8" REBAR. THESE MONUMENTS ARE FOUND IN CONFORMING CORNER LOCATIONS WHENEVER FOUND.



(P) PROPORTIONED BRGS./DIST		
P1	N40-14'17"W	301.24
P2	N52-57'07"W	202.73
P3	N65-24'18"W	315.18
P4	N66-47'31"W	132.21
P5	N66-55'19"W	132.07
P6	N66-53'54"W	132.10
P7	N65-16'35"W	44.63
P8	N66-06'56"W	132.40
P9	N66-17'44"W	132.20
P10	N66-47'40"W	130.96
P11	N65-35'09"W	132.14
P12	N65-31'52"W	132.20
P13	N63-50'43"W	132.97
P14	N61-57'09"W	134.08
P15	N64-23'19"W	104.40
P16	N62-46'36"W	132.82
P17	N62-28'51"W	132.32
P18	N62-28'51"W	132.32
P19	N62-41'08"W	132.06
P20	N62-41'08"W	132.06

(R) CALCULATED FROM RECORD		
R1	N40-11'45"W	301.20
R2	N52-54'46"W	202.67
R3	N65-22'14"W	315.04
R4	N66-45'29"W	132.15
R5	N66-53'17"W	132.01
R6	N66-51'52"W	132.04
R7	N65-14'31"W	44.61
R8	N66-04'53"W	132.34
R9	N66-15'41"W	132.14
R10	N66-45'39"W	130.90
R11	N65-33'05"W	132.08
R12	N65-29'48"W	132.14
R13	N63-48'36"W	132.91
R14	N61-54'59"W	134.03
R15	N64-21'13"W	104.35
R16	N62-44'27"W	132.77
R17	N62-26'43"W	132.26
R18	N62-26'43"W	132.26
R19	N62-39'00"W	132.00
R20	N62-39'00"W	132.00

- LEGEND
- FOUND-SECTION 1/4 CORNER-USGLO BRASS CAP-1941
 - 'SAND'-FOUND CAL TRANS AZ MARKER STA: 760+62.78 AT 39.13'RT. CADH BRASS CAP W/ CONCRETE
 - FOUND SUBDIVISION MONUMENT RCE 7522 SET IN CONCRETE
 - + PROPORTIONED OR OTHER CALCULATED CORNER NOT SET
 - FOUND CORNER AS DESCRIBED
 - SET 5/8" X 2' REBAR W/RCE 30029
 - IP IRON PIPE
 - M MEASURED
 - R RECORD-PER MILL CREEK RANCH SUBDIVISION MB# VOL 2 P27
 - R2 RECORD-PER CAL TRANS STRIP MAPS 1982 AND MONO COUNTY OR# VOL 6 P475 (DEED-LAMPE TO CA.-1932)
 - R3 RECORD-PER RECORD OF SURVEY 31-20, MONO COUNTY VOL 2 P16
 - R4 RECORD-PER RECORD OF SURVEY 31-08, MONO COUNTY VOL 1 P51
 - P BEARING AND DISTANCE DERIVED FROM PROPORTIONING OF THE CFR WEST CORNER OF LOT X TO FOUND S.E. CORNER LOT L
 - CFR CALCULATED FROM RECORD
 - SOUTHERLY LINE OF LOTS S1 AND S AS CALCULATED FROM PROPORTIONING (P) AS SHOWN ON DETAILS #5-7 ON SHEET 3



RICE ENGINEERING, INC.
CIVIL ENGINEERING AND SURVEYING
P.O. BOX 130, 2299 HWY 208, SMITH, NV 89430
(702) 465-2499