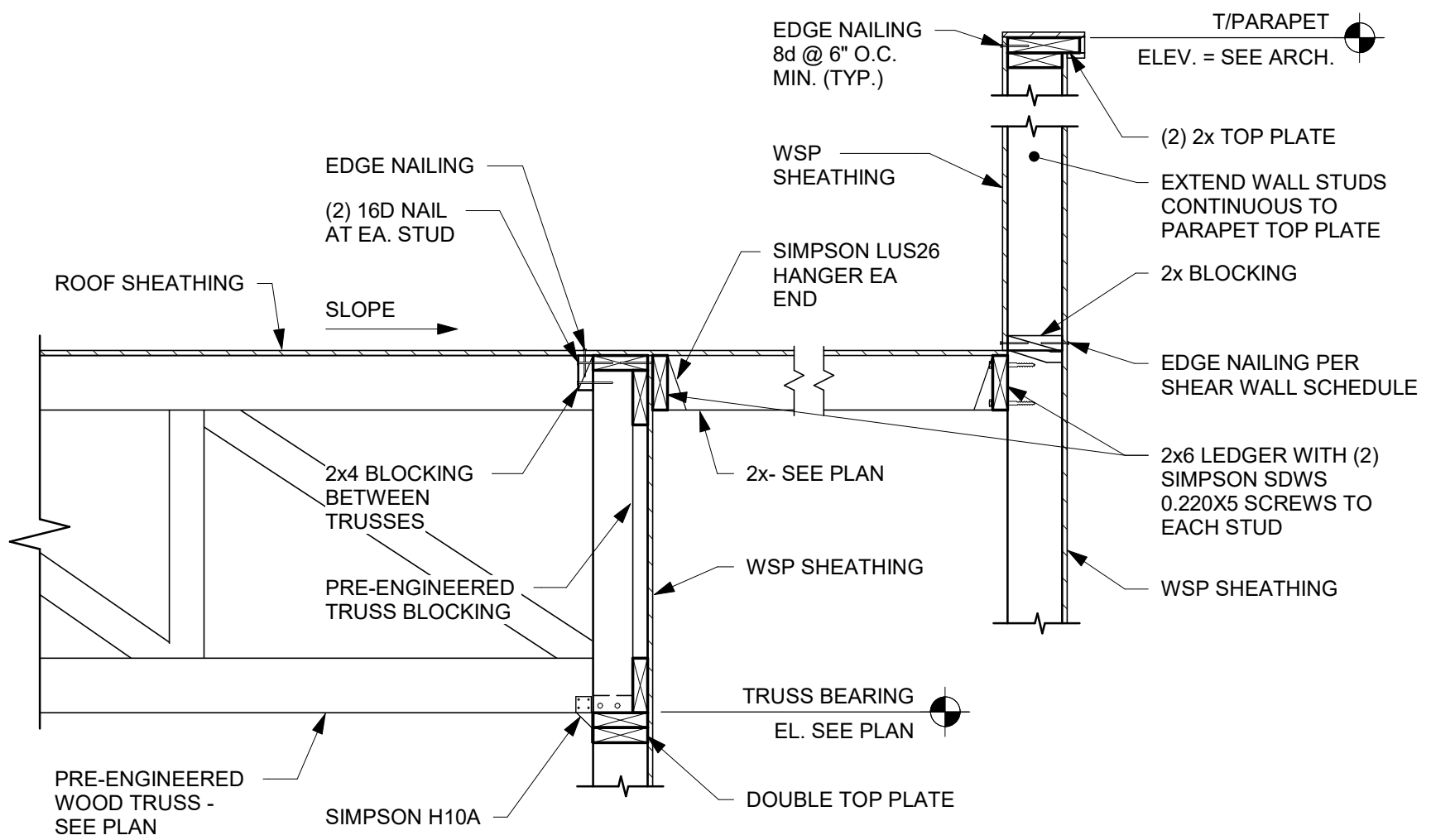


D

C

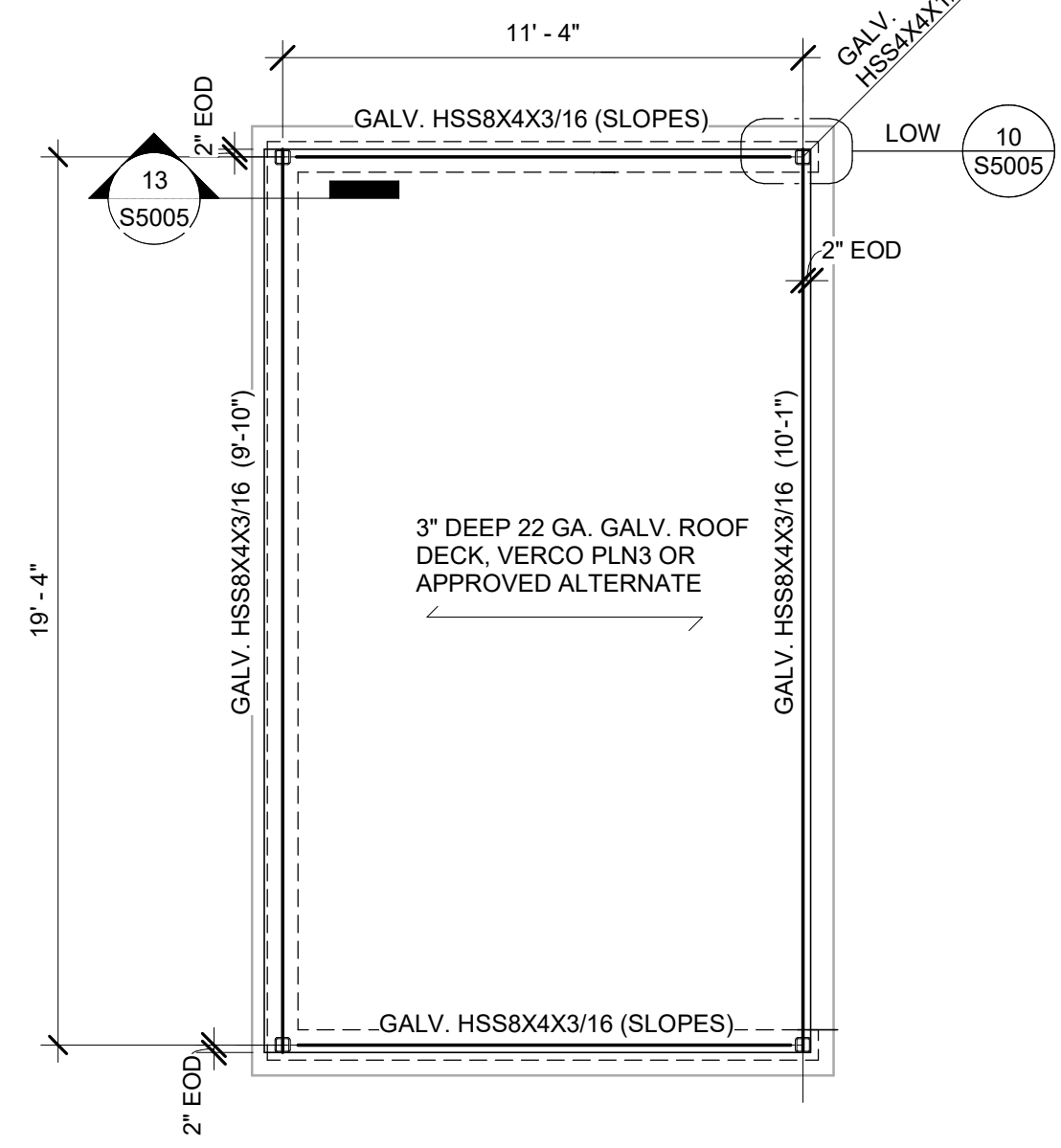
B

A



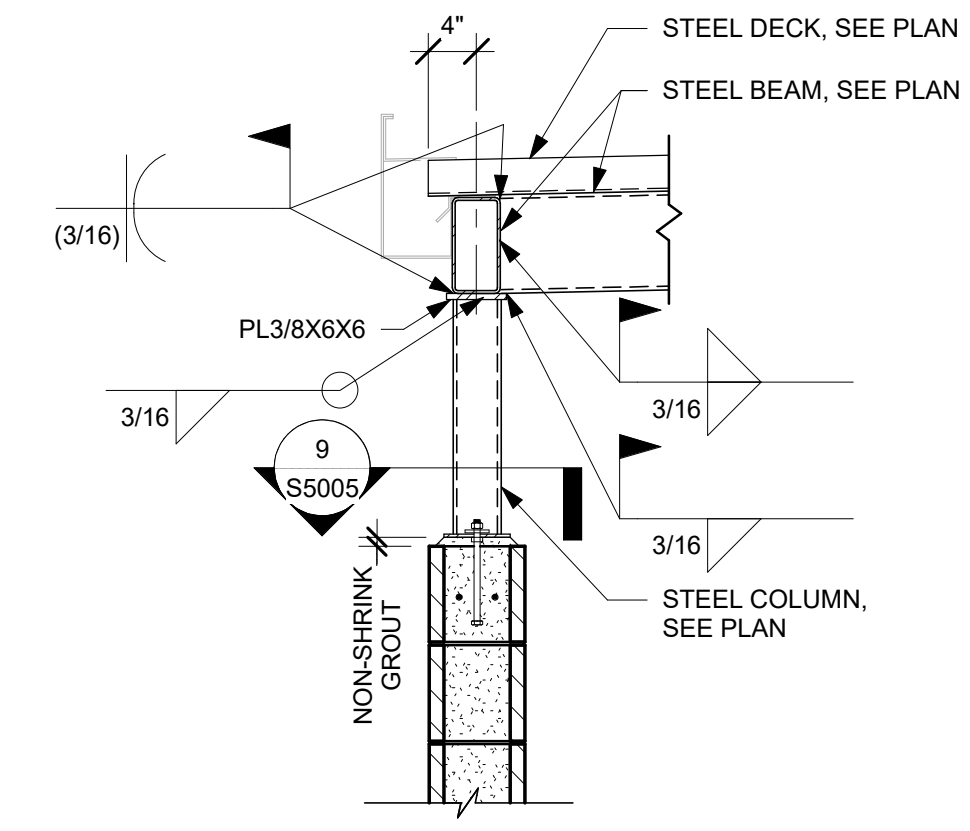
11 SECTION AT FIRE ROOM ROOF

Scale: 3/4\"/>



12 TRASH ENCLOSURE ROOF FRAMING PLAN

Scale: 1/4\"/>

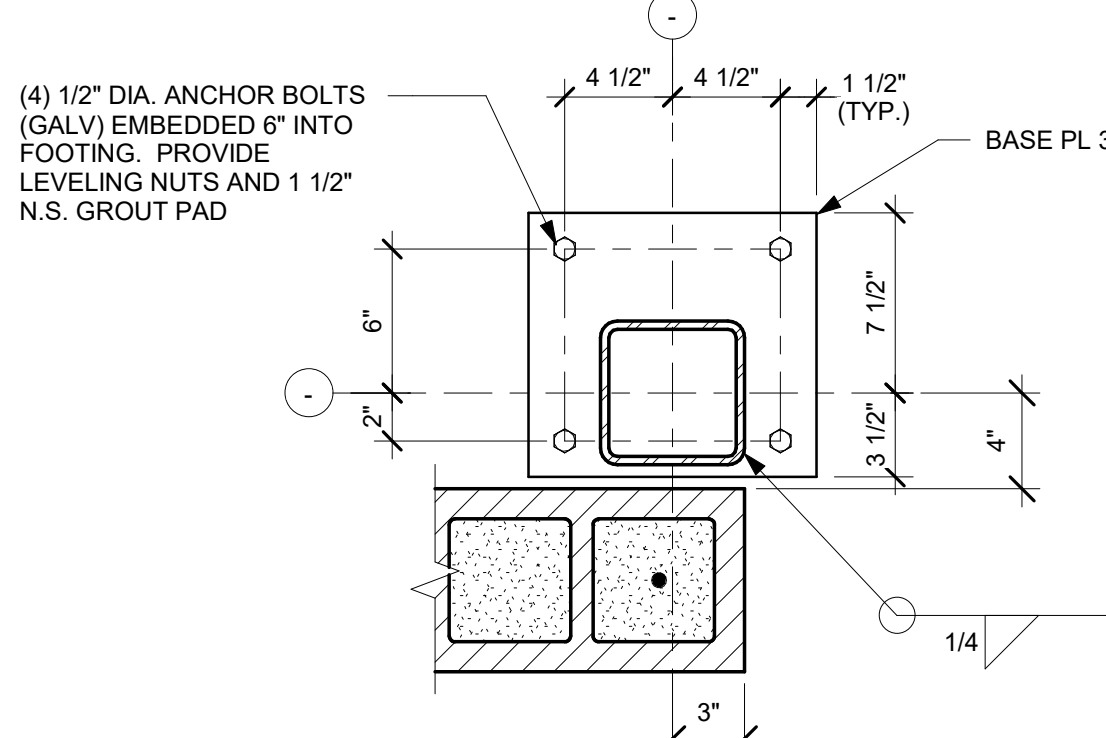


13 ROOF FRAMING SECTION

Scale: 3/4\"/>

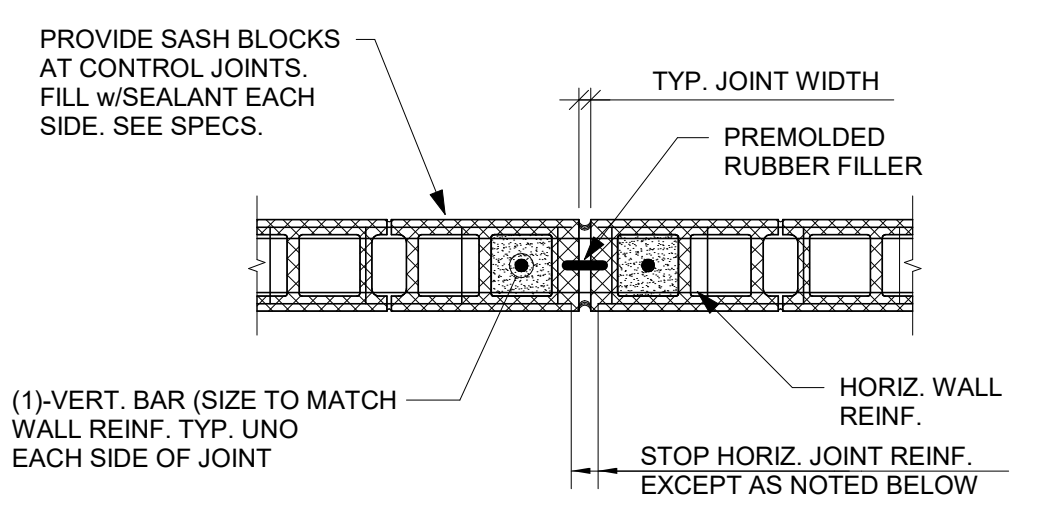
GENERAL NOTES

1. FOR STRUCTURAL GENERAL NOTES & DESIGN CRITERIA, REFERENCE SHEET S0001.
2. SEE CIVIL DRAWINGS FOR FINISH GRADE.
3. COORDINATE ALL DIMENSIONS AND DETAILS WITH ARCHITECTURAL DRAWINGS.
4. SEE SITE PLAN FOR LOCATION.
5. FOOTINGS ARE DESIGNED BASED ON A PRESUMPTIVE MINIMUM ALLOWABLE SOIL BEARING PRESSURE OF 1500 PSF.
6. FASTEN EACH CECK RIB TO STEEL SUPPORT WITH 5/8\"/>



7 GATE POST BASE DETAIL (2 REQD.)

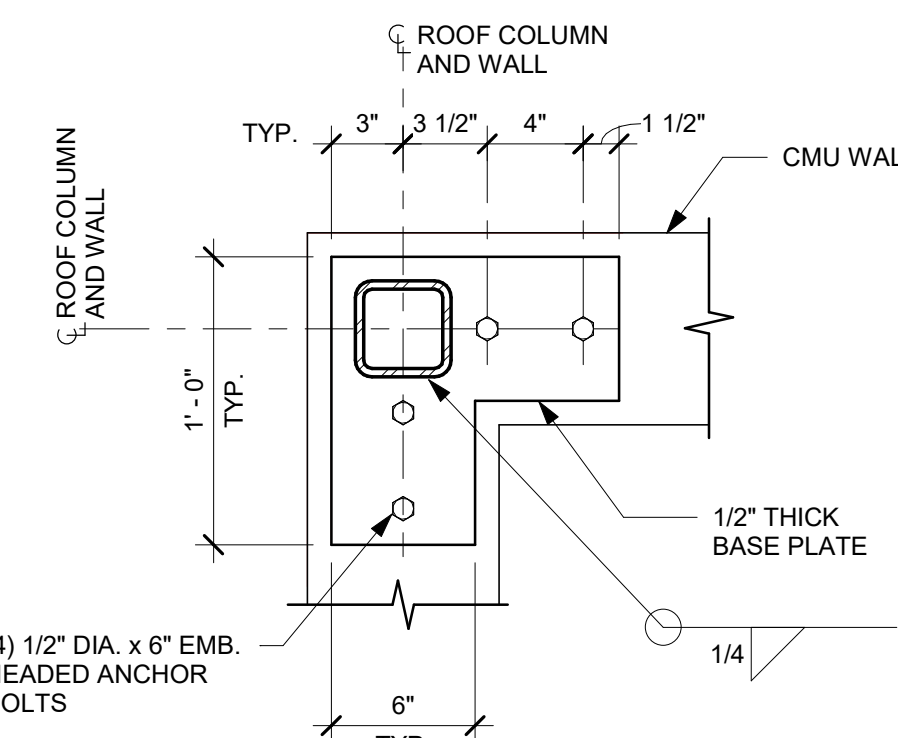
Scale: 1 1/2\"/>



8 TYPICAL MASONRY CONTROL JOINT

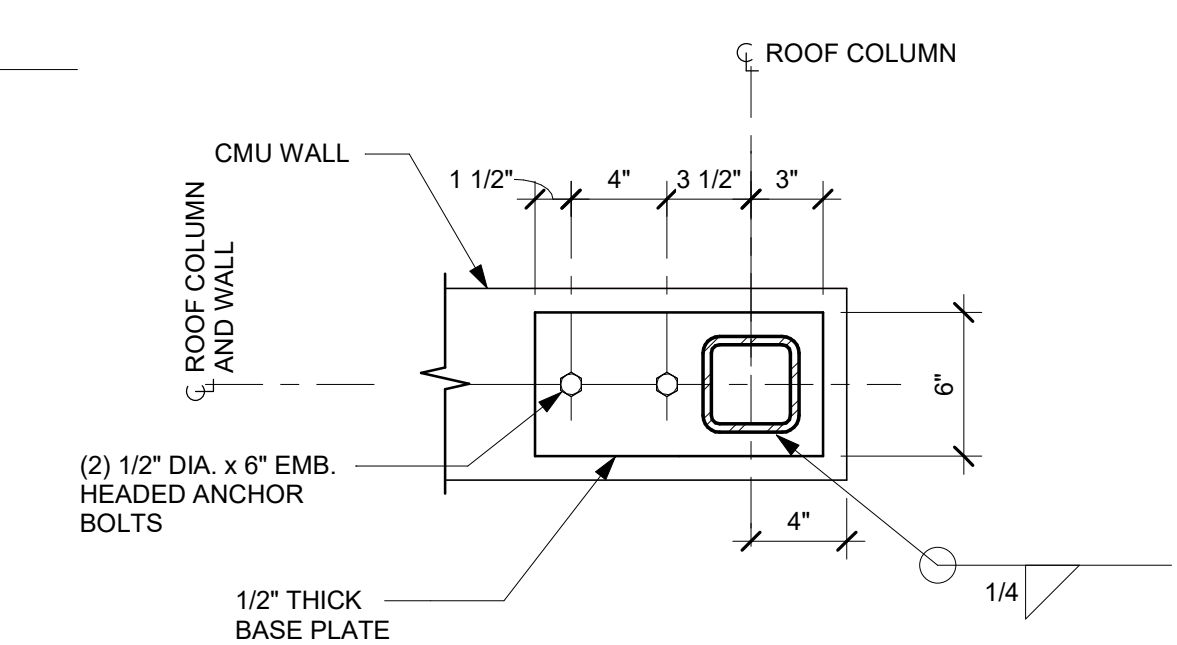
Scale: 3/4\"/>

- NOTES:
1. OBTAIN ARCHITECT'S APPROVAL OF JOINT LOCATIONS.
 2. MAX. SPACING OF JOINTS, PANEL LENGTH/HEIGHT = 1.5 MULTIPLIED WALL HEIGHT.
 3. HORIZONTAL BOND BEAM WALL REINFORCING CONTINUES THROUGH JOINT.



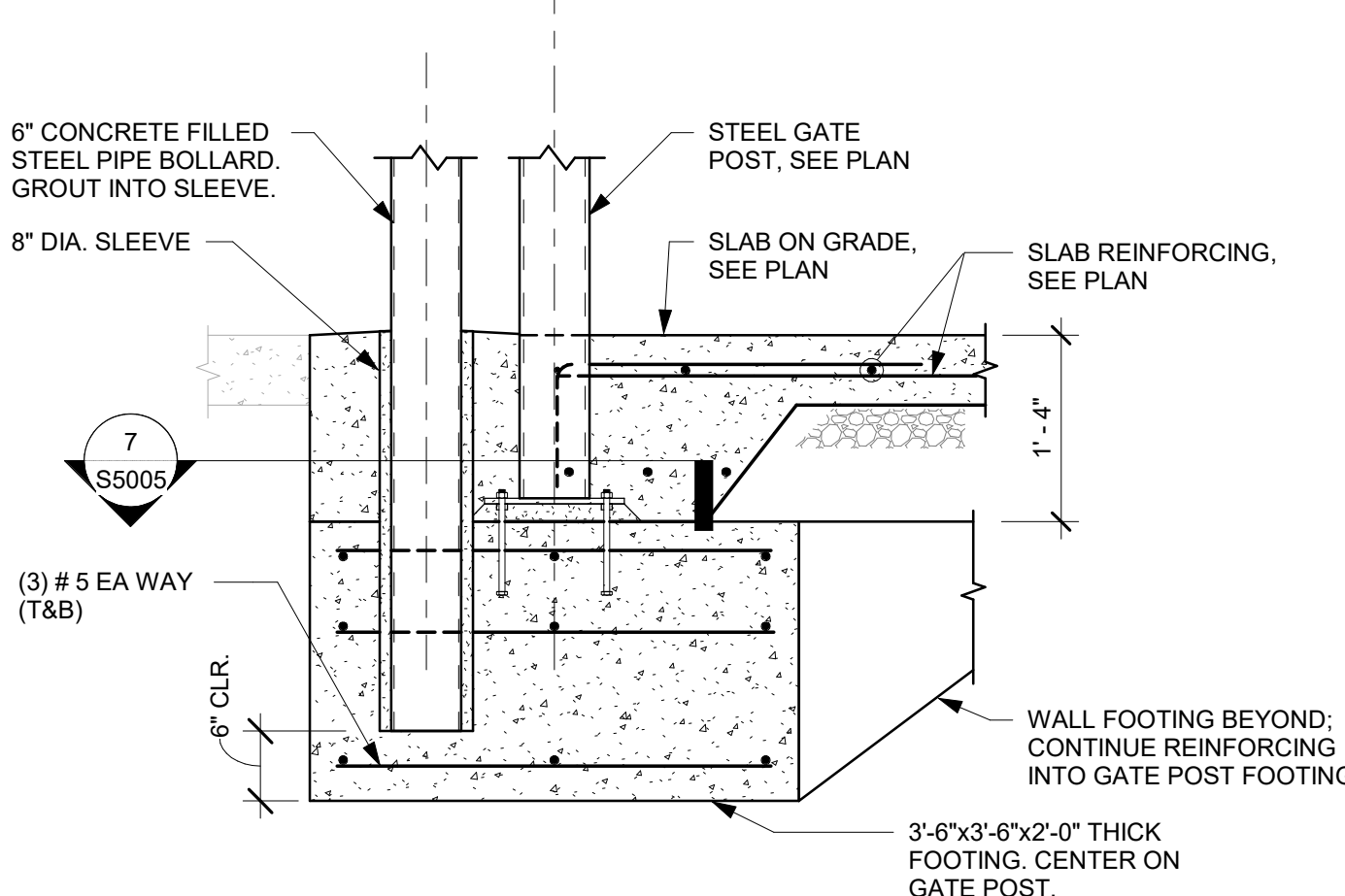
9 ROOF COLUMN BASE DETAIL

Scale: 1 1/2\"/>



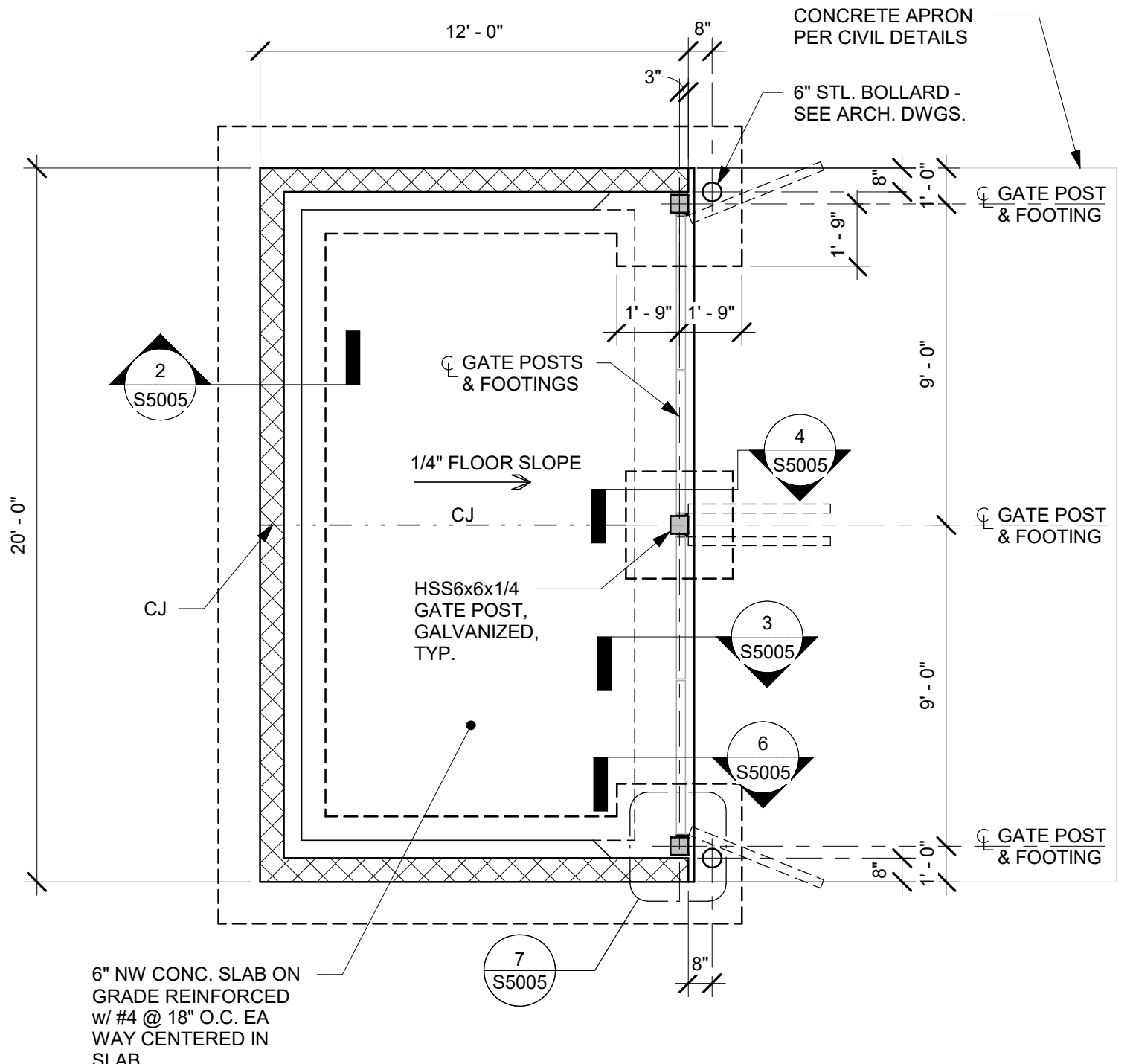
10 ROOF COLUMN BASE DETAIL

Scale: 1 1/2\"/>



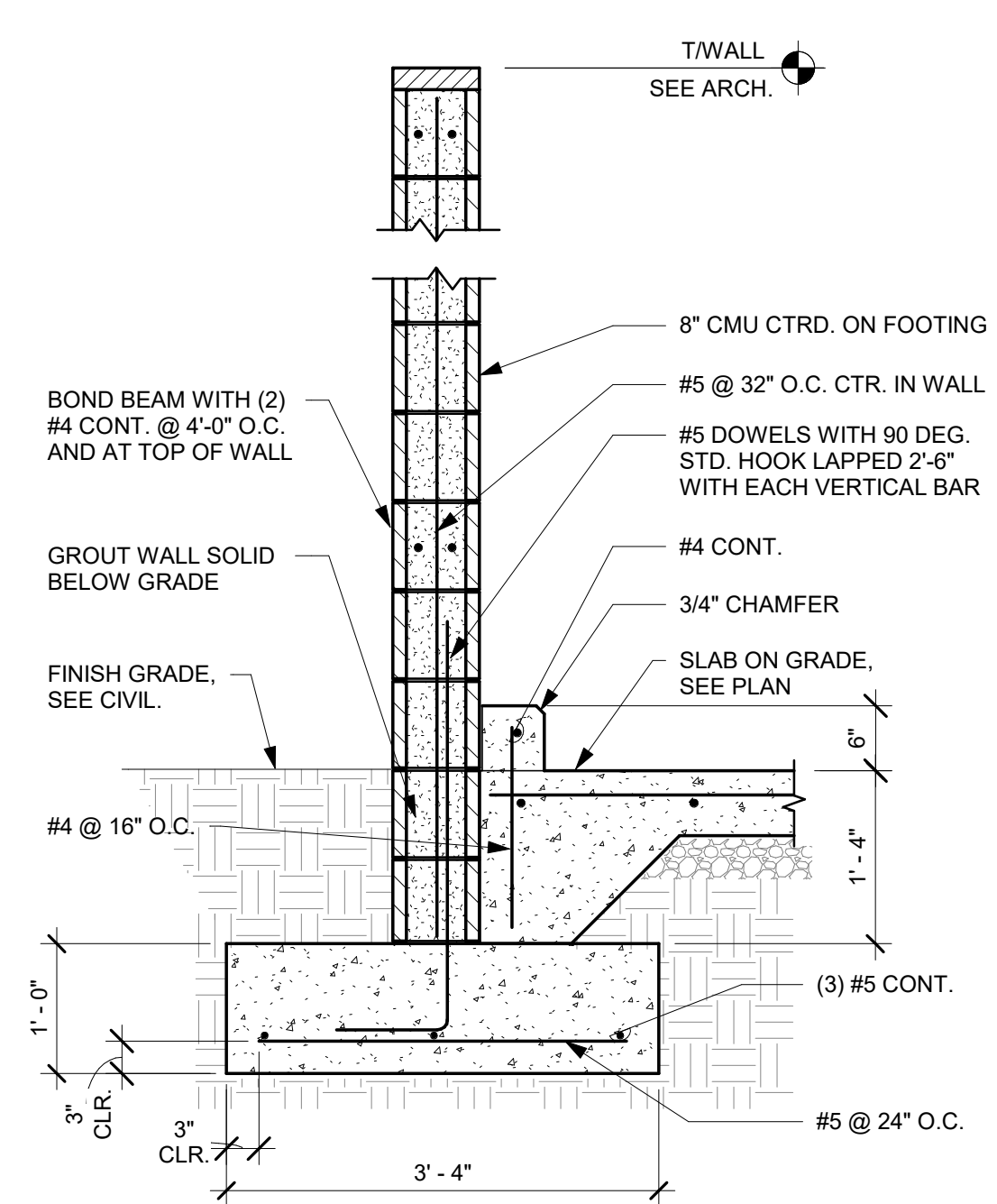
6 SECTION AT GATE POST WITH BOLLARD

Scale: 3/4\"/>



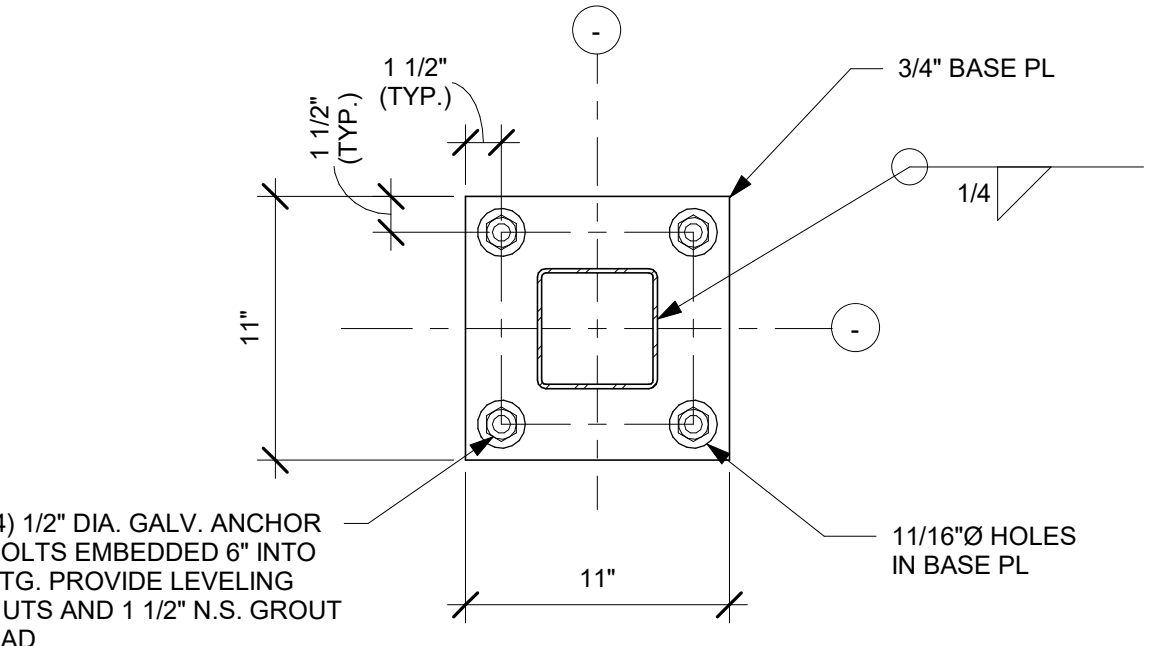
1 TRASH ENCLOSURE FOUNDATION PLAN

Scale: 1/4\"/>



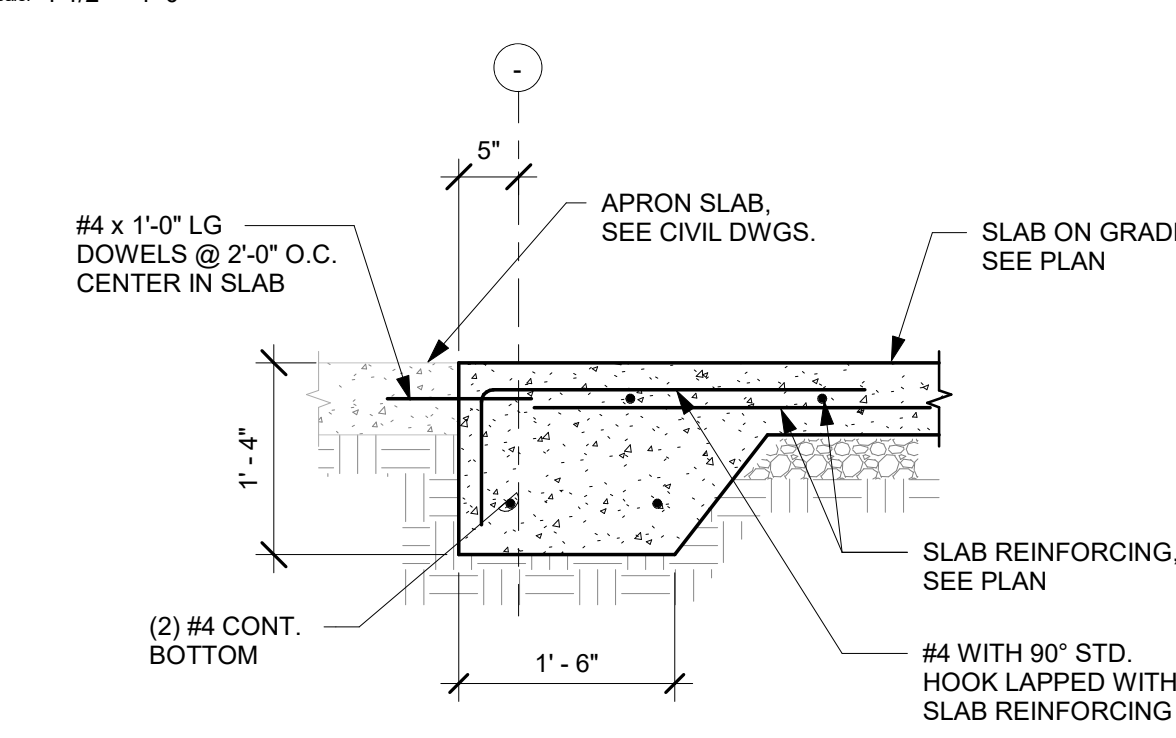
2 SECTION AT TRASH ENCLOSURE WALL

Scale: 3/4\"/>



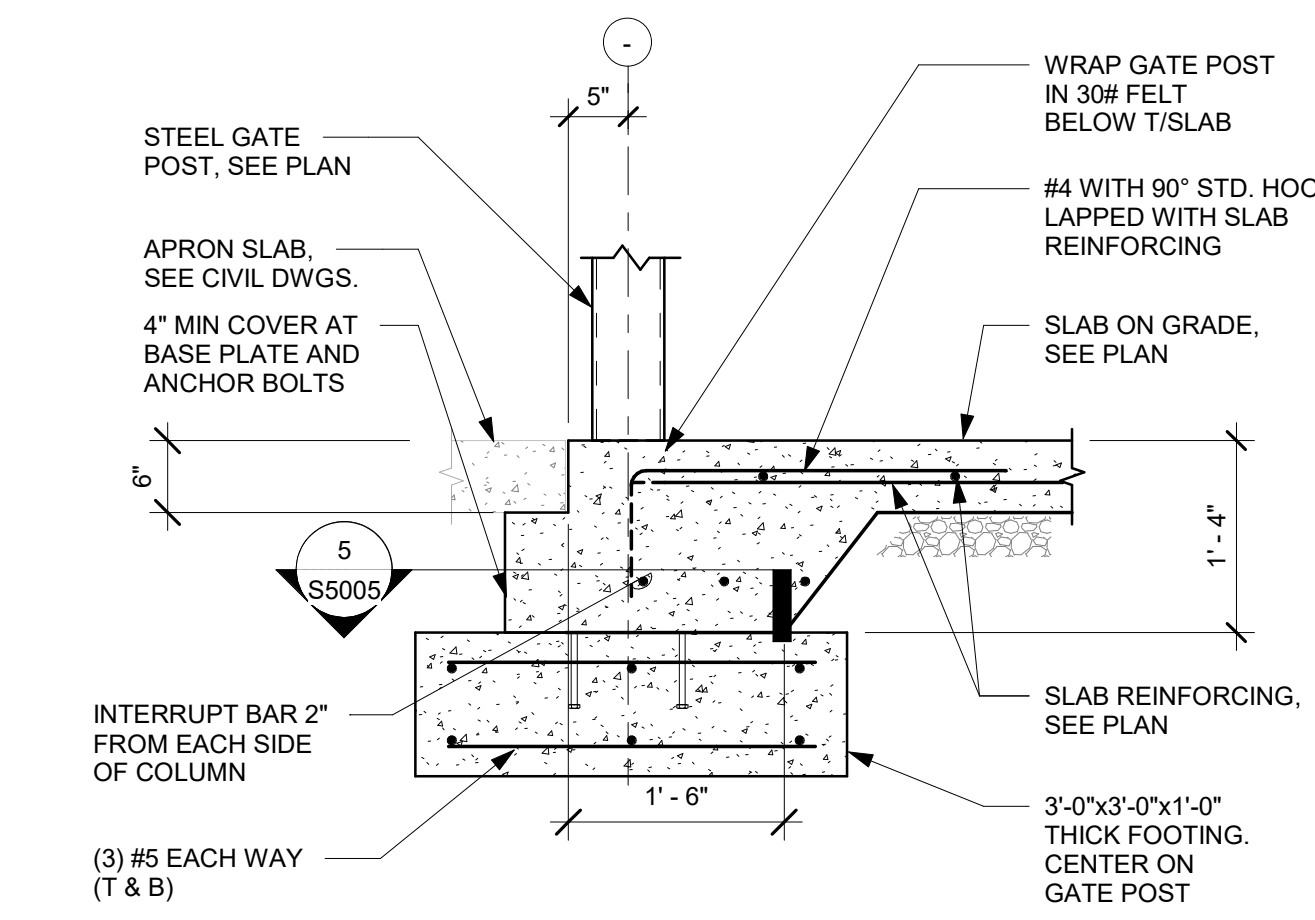
5 GATE POST BASE DETAIL

Scale: 1 1/2\"/>



3 SECTION AT SLAB EDGE

Scale: 3/4\"/>



4 SECTION AT GATE POST

Scale: 3/4\"/>

REV.	DATE	DESCRIPTION
1	08/27/2021	BUILDING DEPARTMENT REVISIONS



MARIETTA HWY & I-575
5068 MARIETTA HIGHWAY
CANTON, GA 30114

**DUMPSTER ENCLOSURE
STRUCTURAL PLANS AND
DETAILS**

ISSUED FOR CONSTRUCTION	DATE
BID	

PROJECT MANAGER	DESIGNER
AK	AHG

JOB NO.
2020379.07

S5005