

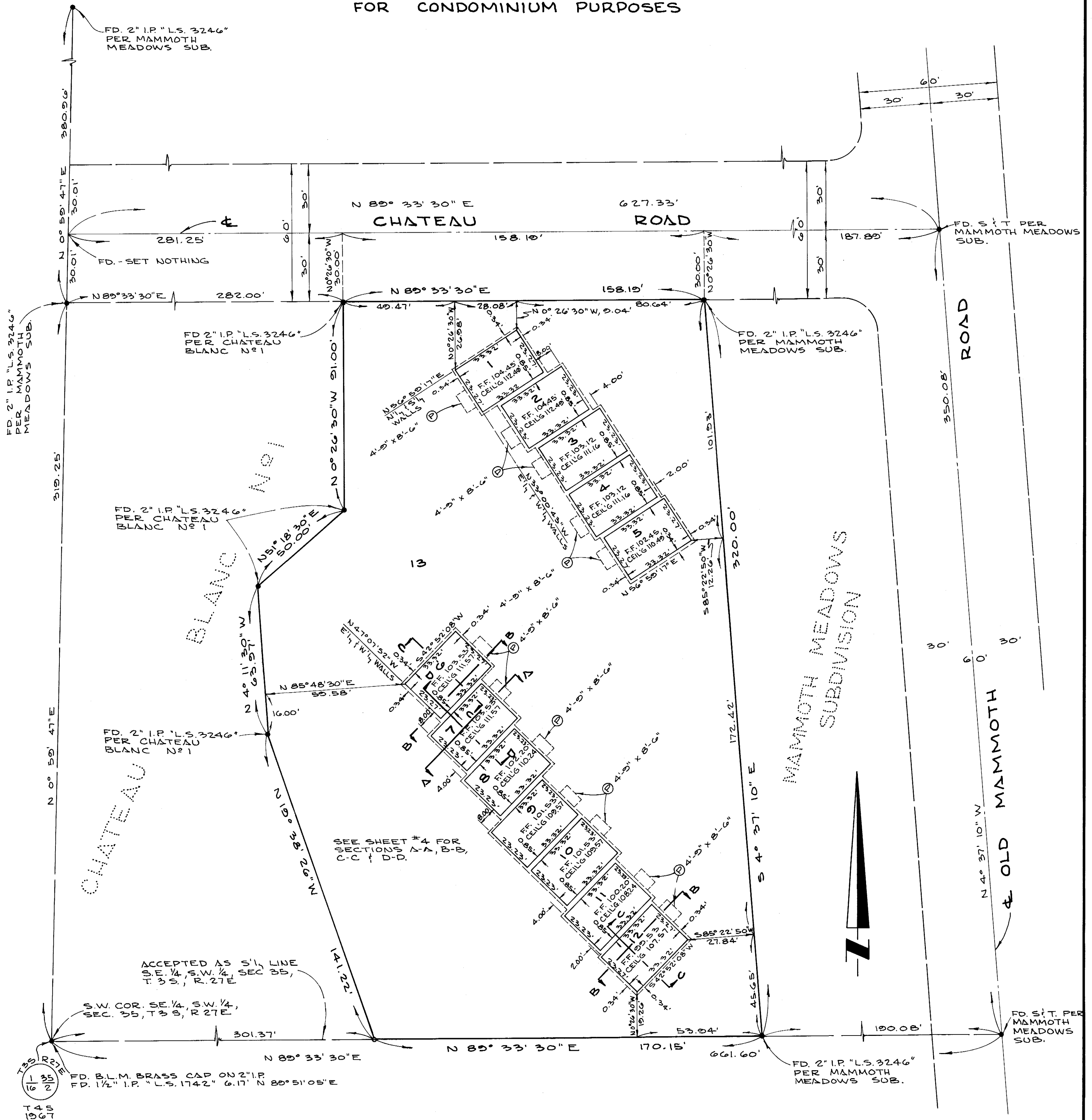
CHATEAU BLANC N°2

IN UNINCORPORATED TERRITORY OF MONO COUNTY, CALIFORNIA

JULY, 1969
13 LOTS

GERALD F. OLDENBURG, L.S. 3246
1.349 ACRES

FOR CONDOMINIUM PURPOSES



NOTES:

1. LOT 13 COMPRISES THE LAND AND REAL PROPERTY WITHIN THE BLUE BORDER OF THIS SUBDIVISION EXCEPT THEREFROM UNITS 1 THROUGH 12 INCLUSIVE, AS SHOWN AND DESCRIBED.
2. EACH PARCEL SHOWN AND DESIGNATED WITH ONE OF THE NUMBERS 1 THROUGH 12 INCLUSIVE, OR ONE OF SUCH NUMBERS FOLLOWED BY THE SUFFIX "U" IS A SUBDIVISION OF AIRSPACE. PARCELS DESIGNATED WITH ONLY A NUMBER ARE FIRST FLOOR PARCELS IN A BUILDING BUILT OR TO BE BUILT. PARCELS DESIGNATED WITH A NUMBER FOLLOWED BY THE SUFFIX "U" ARE SECOND-FLOOR PARCELS IN A BUILDING BUILT OR TO BE BUILT.
3. EACH UNIT IS DESIGNATED WITH ONE OF THE NUMBERS 1 THROUGH 12, INCLUSIVE. EACH UNIT IS COMPRISED OF TWO PARCELS ONE DESIGNATED WITH ONE OF THE NUMBERS 1 THROUGH 12, INCLUSIVE, AND THE OTHER DESIGNATED WITH THE SAME NUMBER FOLLOWED BY THE SUFFIX "U".
4. ON ALL PARCELS, THE SOLID LINES INDICATE INTERIOR FACES OF WALLS OF A BUILDING BUILT OR TO BE BUILT. THICKNESS OF OUTSIDE WALLS IS 0.34'. THICKNESS OF ALL COMMON WALLS IS 0.88'.
5. THE BOUNDARIES OF THE PARCELS SHOWN HEREON ARE MEASURED TO THE INTERIOR SURFACES OF THE VERTICAL, HORIZONTAL AND INCLINED PLANE AT THE LIMITS OF THE ELEVATIONS OR DIMENSIONS SHOWN OR DESCRIBED. THE BOUNDARIES OF EACH PARCEL ARE THE INTERIOR FACES OF ITS WALLS AND THE INTERIOR SURFACES OF ITS FINISHED FLOOR AND CEILING.
6. "F-F" INDICATES FINISHED FLOOR ELEVATIONS.
7. "CEIL'G" INDICATES CEILING ELEVATIONS OF THE FIRST FLOOR PARCELS.

8. AREAS DESIGNATED BY THE LETTER "P" ARE PORCHES ADJACENT TO PARCELS AS SHOWN AND ARE NOT A PART OF THE PARCELS OR UNITS.
9. AREAS DESIGNATED BY THE LETTER "S" ARE SUN DECKS ADJACENT TO PARCELS AS SHOWN AND ARE NOT A PART OF THE PARCELS OR UNITS.

BENCH MARK: ELEVATIONS HEREON ARE BASED ON THE TOP OF THE BLM. MONUMENT MARKING THE S.W. CORNER OF THE S.E. 1/4, S.W. 1/4, SEC. 35, T.3 S., R.27 E., BEING 100.00' (ASSUMED)

BASIS OF BEARINGS: BEARINGS HEREON ARE BASED ON THE CENTERLINE OF CHATEAU ROAD BEING N 89° 33' 30" E PER MAMMOTH MEADOWS SUBDIVISION.

MONUMENT NOTES:

- INDICATES SET 2" IRON PIPE TAGGED "L.S. 3246"
- INDICATES FOUND MONUMENTS AS NOTED

2/22/69 pg 59-C