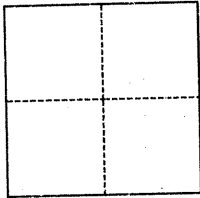


# CORNER RECORD

Agency Index BK 125 PG 88  
Document Number CR-13165

City of EDEN TOWNSHIP County of ALAMEDA, California  
Brief Legal Description Monument at Doane St. and Dermody Ave. per TR 995, 30 Maps 58

## CORNER TYPE



- ☐ Government Corner ☒ Control  
☐ Meander ☐ Property  
☐ Rancho ☐ Other

Date of Survey August 5, 2019

## COORDINATES (Optional)

N. \_\_\_\_\_ E. \_\_\_\_\_  
Elevation \_\_\_\_\_  
Units ☐ Metric ☐ U.S. Survey Foot  
Horizontal Datum \_\_\_\_\_  
Zone \_\_\_\_\_ Epoch Date \_\_\_\_\_  
Vertical Datum \_\_\_\_\_  
☐ Complies with Public Resources Code §§8801-8819  
☐ Complies with Public Resources Code §§8890-8902

PLS Act Ref.: ☐ 8765(d) ☒ 8771 ☐ 8773 ☐ Other:  
Corner/Monument: ☒ Left as found ☐ Established ☐ Rebuilt ☒ Pre-Construction  
☐ Found and tagged ☐ Reestablished ☒ Referenced ☐ Post-Construction

Narrative of corner identified and monument as found, set, reset, replaced, or removed:  
☒ See sheet #2 for description(s):

FOUND COUNTY MONUMENT, BRONZE PIN IN MONUMENT WELL AT THE INTERSECTION OF DOANE STREET AND DERMODY AVENUE AS SHOWN ON TRACT MAP 995, BOOK 30 PAGE 58. SET STAINLESS STEEL TAGS AS SHOWN ON PAGE 2.

## SURVEYOR'S STATEMENT

This Corner Record was prepared by me or under my direction in conformance with the Professional Land Surveyors' Act on August 10, 2019  
Signed [Signature] P.L.S. or P.C.E. No. 7905

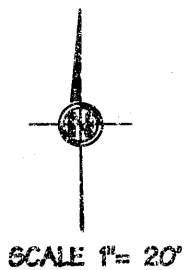


## COUNTY SURVEYOR'S STATEMENT

AUG 07 2019

This Corner Record was received \_\_\_\_\_  
and examined and filed OCT 28 2019  
Signed [Signature] P.L.S. or P.C.E. No. 7010  
Title County Surveyor  
County Surveyor's Comment  
SPEC 2380

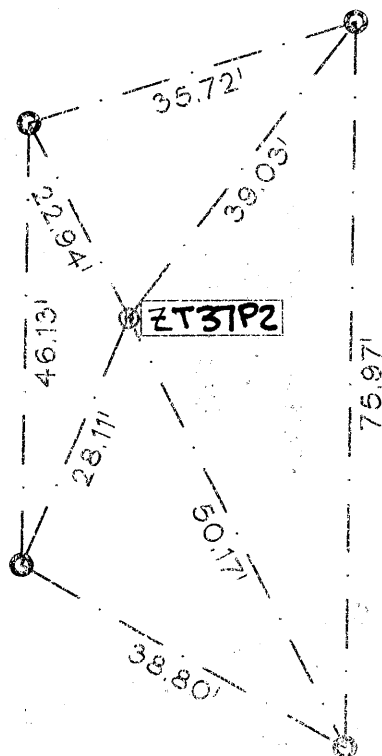
APN:  
80D-562-15



DERMODY  
AVENUE  
(FORMERLY CLARK AVE.)

REFERENCE:

TRACT 995 - BOOK 30 PAGE 58



DOANE  
STREET

LEGEND:

FOUND STANDARD ALAMEDA  
COUNTY MONUMENT IN WELL ©  
SET STAINLESS STEEL  
TAG (L.S. 7905) AND NAIL ○  
COUNTY MONUMENT No. **AAHA**