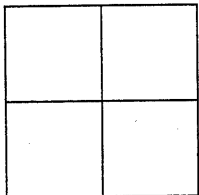


## CORNER RECORD

Document Number CR 5614City of OAKLANDCounty of ALAMEDA, CaliforniaBrief Legal Description IRON PIN MONUMENT LOCATED WITHIN GRIZZLY PEAK BOULEVARD.  
(2SW58 BM)

## CORNER RECORD

Government Corner ☐ Control ☒  
 Meander ☐ Property ☐  
 Rancho ☐ Other ☐  
 Date of Survey 5/3/13

COORDINATES  
(Optional)

N. 2145109 ±1'  
 E. 6065030 ±1'  
 Zone \_\_\_\_\_ Datum \_\_\_\_\_  
 Elev. \_\_\_\_\_

Corner — Left as found ☒ Found and tagged ☐ Established ☐ Reestablished ☐ Rebuilt ☐

Identification and type of corner found: Evidence used to identify or procedure used to establish or reestablish the corner:  
FOUND IRON PIN MONUMENT LOCATED WITHIN GRIZZLY PEAK BOULEVARD APPROXIMATELY  
0.645 MILES NORTHERLY FROM THE INTERSECTION OF FISH RANCH ROAD.  
AS SHOWN ON CITY OF OAKLAND MONUMENT MAP, PAGE 353.

THIS POINT WAS REFERENCED PRIOR TO A CONSTRUCTION PROJECT IN THE VICINITY.

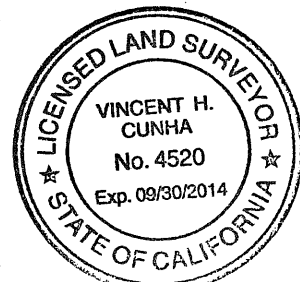
A description of the physical condition of the monument as found and as set or reset:  
FOUND AND SET POINTS AS SHOWN ON PAGE 2.

THESE TIES ARE FOR THE PURPOSE OF PERPETUATING THE FOUND MONUMENTATION.

NO CLAIM IS MADE AS TO THE RELATIONSHIP OF THE POINTS OR LINES SHOWN HEREON  
TO TRUE BOUNDARY LOCATIONS.

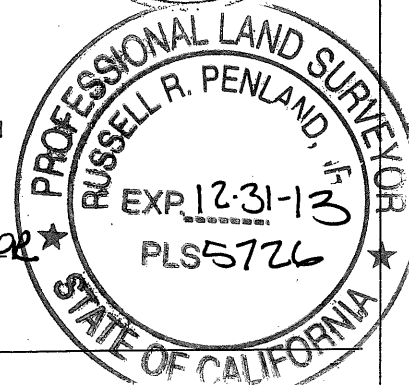
## SURVEYOR'S STATEMENT

This Corner Record was prepared by me or under my direction in conformance with  
 the Land Surveyors' Act of MAY 7, 2013.  
 Signed Vincent H. Cunha L.S. Number LS 4520  
VINCENT H. CUNHA



## COUNTY SURVEYOR'S STATEMENT

This Corner Record was received 5-30-2013 and examined  
 and filed 8-23-2013  
 Signed Russell R. Penland Title County Surveyor



County Surveyor's Comment \_\_\_\_\_

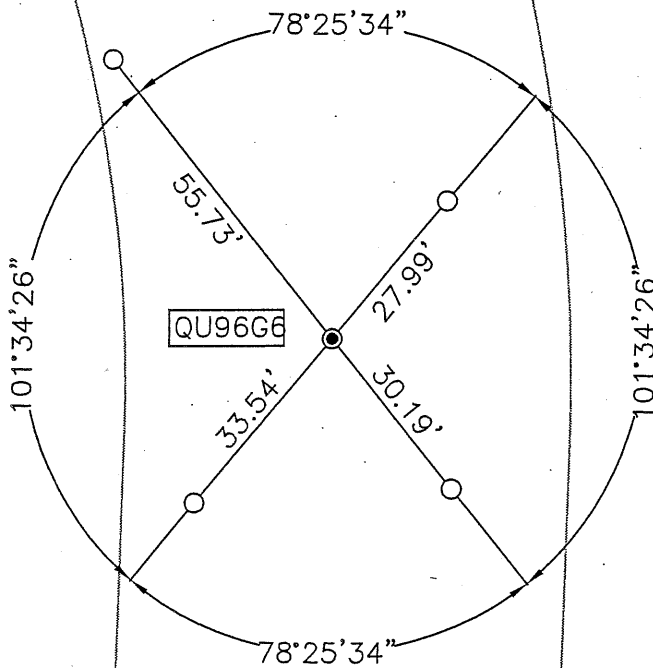
SCALE: 1"=30'

## LEGEND

● FOUND IRON PIN IN MONUMENT WELL (2SW58 BM)

○ SET 1/2" REBAR & BLANK CAP

AA###A# ALAMEDA COUNTY MONUMENT ID



GRIZZLY PEAK  
BOULEVARD