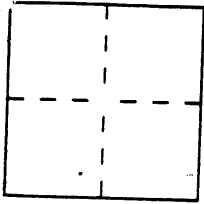


## CORNER RECORD

Document Number 708  
City of Oakland County of ALAMEDA, CaliforniaBrief Legal Description LOTS 24 & 25, BLOCK B OF MAP NO. 1  
HIGHLAND TERRACE 20 MAPS P. 11 ALA. CTY. RECORDS

## CORNER TYPE

 Government Corner ☐ Control ☐  
 Meander ☐ Property ☒  
 Rancho ☐ Other ☐  
 Date of Survey 1/29/96
COORDINATES  
(Optional)
 N. \_\_\_\_\_  
 E. \_\_\_\_\_  
 Zone \_\_\_\_\_ Datum \_\_\_\_\_  
 Elev. \_\_\_\_\_

 Corner — Left as found ☐ Found and tagged ☐ Established ☒ Reestablished ☐ Rebuilt ☐

 Identification and type of corner found: Evidence used to identify or procedure used to establish or reestablish the corner: ESTABLISHED THE LINE BETWEEN LOTS 24 & 25 OF BLOCK B BASED ON CURB SPLITS ON GILBERT ST. & RIDGEWAY AVE.

 A description of the physical condition of the monument as found and as set or reset: CURBS WERE IN GOOD CONDITION.

## SURVEYOR'S STATEMENT

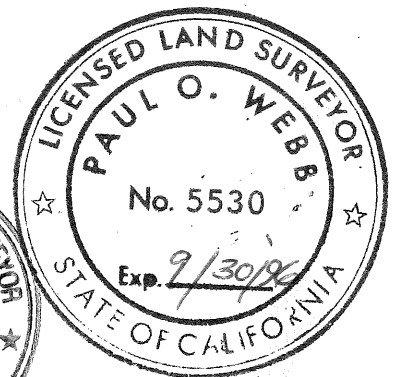
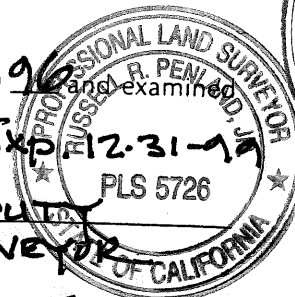
 This Corner Record was prepared by me or under my direction in conformance with the Land Surveyors' Act on 1/30 19 96.

 Signed Paul O. Webb L.S. or R.C.E. Number L.S. 5530

## COUNTY SURVEYOR'S STATEMENT

 This Corner Record was received 2/14 19 96 and filed 4/15 19 96.

 Signed Russell R. Penland Title DEPUTY COUNTY SURVEYOR

 County Surveyor's Comment THIS CORNER RECORD ESTABLISHES ONE OR MORE POINTS OR LINES NOT SHOWN ON ANY SUBDIVISION MAP, OFFICIAL MAP, OR RECORD OF SURVEY. SEE 8762(d),(e) OF PROFESSIONAL LAND SURVEYORS' ACT.


# Legend:

- - set nail & tag  
L.S. 5530
- - set 3/4" iron pipe  
L.S. 5530

Ridgeway Ave.  
(Frederick St.)

Ridgeway Ave.  
(Gaskill St.)  
(80' wide)

Note: The location of Ridgeway Ave. determined by curb splits taken at

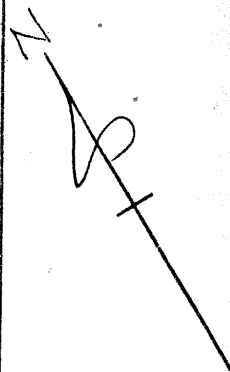
0', 40', 127' & 162' southeasterly of the southeasterly line of Gilbert St.

The location of Gilbert St. determined by curb splits taken at 0', 226', 370' & 639' southwesterly of the southwesterly line of Ridgeway Ave.

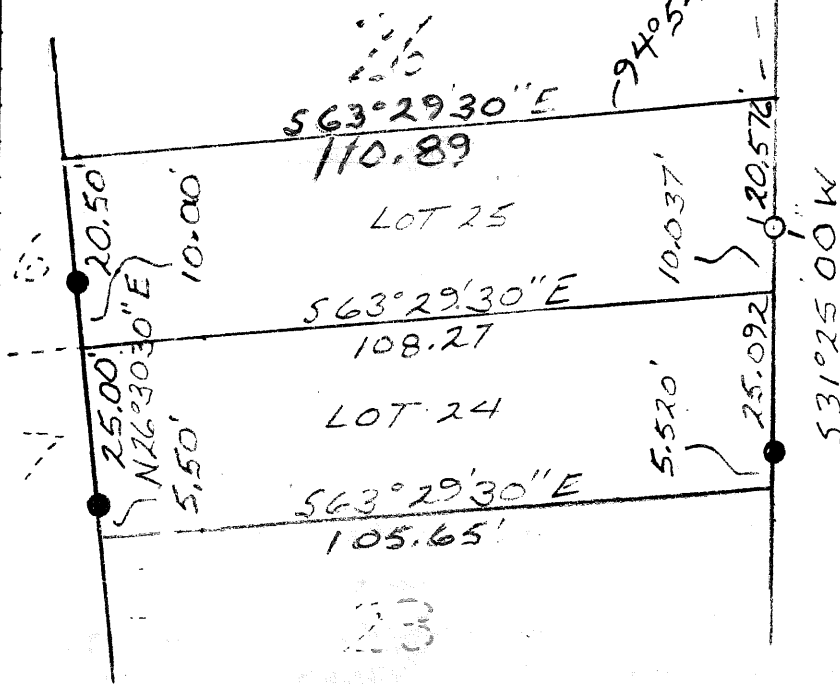
Basis of Bearings:  
The curb line of Gilbert St.  
Taken as N31°25'E per 20 MAPS 11

Gilbert street  
(60.00' wide)

S58°35'E



Scale: 1"=30'



Lots 24 & 25  
of Block B as  
shown on Map No 1  
of Highland Terrace  
filed June 15, 1904  
in Book 20 of  
Maps, page 11,  
Alameda County  
Records. Being in  
the City of Oakland.  
Ca. 1"=30'

Prep. by P.W. 1/30/96