

Corner Notes

- 1

Found and accepted 1 1/2-in bolt with square head and the following bearing trees: a 6-ft redwood stump N71°E, 3.7 (face); a 3-ft redwood stump N12°W, 9.0-ft (center) as shown on MC 1, DWR 7, PG 134; MC 2, Dwr 2, Pg 46; and MC 2, Dwr 64, Pg 42-43
- 2

Set rebar and aluminum cap stamped "PC" from which bears a 20-in redwood, N82°E, 6.8-ft (face), scribed "PC BT" with LS 4570 washer. Set monument on curve calculated from found 1-in iron pipes (see corner note 15).
- 3

Set rebar and aluminum cap stamped "CE 1/16" from which bears a 10-in redwood, S36°E, 15.5-ft (center) scribed "CE 1/16 BT" with LS 4570 washer.
- 4

Set rebar and aluminum cap stamped "C 1/4" from which bears a 9-in Grand-fir, N7°E, 10.3-ft and a 13-in redwood, S21°W, 11.6-ft (center), scribed "C 1/4" with LS 4570 washer.
- 5

Set rebar and aluminum cap stamped "CS 1/16" from which bears a 22-in redwood, N6°E, 13.3-ft (center), scribed "CS 1/16 BT" with LS 4570 washer.
- 6

Set rebar and aluminum cap stamped "S1/4 S 1/4" from which bears a 27-in Grand-fir, N40°W, 13.6-ft (center), scribed "S 1/4 BT" with LS 4570 washer.
- 7

Set rebar and aluminum cap stamped "E 1/16 S 14/23" from which bears a 46-in redwood, N68°W, 34.2-ft (center), scribed "E 1/16 S 14 BT" with LS 4570 washer.
- 8

Set rebar and aluminum cap stamped "N 1/16 S 23" from which bears a 14-in redwood, N75°E, 6.8-ft (center), scribed "NE 1/16 BT" with LS 4570 washer.
- 9

Set rebar and aluminum cap stamped "CE 1/16" from which bears a 10-in redwood, S47°W, 19.8-ft (center), scribed "CE 1/16 BT" with LS 4570 washer.

10

Set rebar and aluminum cap stamped "SE 1/16" from which bears a 21-in Grand fir, N72°W, 24.7-ft to the center. Scribed "SE 1/16 BT" with LS 4570 washer.

11

Found and accepted 3/4-in rebar with 2-in aluminum cap stamped Zimmerman Land Survey S1/16 S 23/24 and the following bearing tree: a 14-in Grand fir S46°W, 3.5-ft scribed "S1/16 S23BT" per MC 2, Dwr 64, pg 42, M.C.R.

12

Found and accepted 2-in iron pipe with brass cap stamped "US GLO Survey, T22N, R18W, S23.24.25.26 1925" per MC 2, Dwr 53, Pg 88, MCR; MC 2, Dwr 64, pg 42 also found 1 1/2 iron pipe with brass cap stamped S 23.24.25.26 T22N, R18W and LS 605 on the side of the cap per MC 1, Dwr 6, Pg 69; MC 2, Dwr 64, pg 42 which bears N 77°49'08" W, 3.70-ft.

13

Found and accepted 3/4-in rebar with 2-in aluminum cap stamped Zimmerman Land Survey S 13, 14, 23, 24 and the following bearing trees: a 50-in redwood stump N24°E, 28.38-ft; a 8-ft redwood stump N22°W, 62.7-ft, scribed "S14BT"; a 20-in redwood S20°W, 43.0-ft, per MC 2, Dwr 64, Pg 42-43

14

Found 2-in brass capped iron pipe set in concrete stamped Cal Dept of Trans Soldier Frank 2 1930 1983 N: 2.408.258.52 E: 6046573.31

15

Found and accepted 1-in iron pipe with plug stamped "Calif. DOT" per Maps, Dwr 70, Pg 42-49 on west side of Highway 1 at stations PRC 171+98.53 and EC 178+59.76.

Legend

- 5/8-in x 36-in rebar with aluminum cap set in this survey
- Found Monuments of record as noted
- ◇

Calculated Position of meander corners
- ▣

Brass Cap Iron Pipe set in Cement (Soldier Frank 2)

Property line flagged tinned and blazed in this survey

Information from Government Notes and Plat of survey by D.D. Brown, Deputy Surveyor, under his contract of February 19th, 1875

Record information per Map Case 2, Drawer 2, Page 46

Record information per Map Case 2, Drawer 64, Page 42-43

Record information per Maps, Drawer 70, Page 42-49

Survey Notes

The purpose of this survey was to mark lines for timber management purposes.

Distances shown hereon are in feet, unless otherwise noted.

Bearings are based on MC 2, Dwr. 64, Pg. 42, MCR, Rotate bearings counter clockwise 1°09'19" to true bearings (NGS at Soldier Frank 2). Ground distances are used hereon.

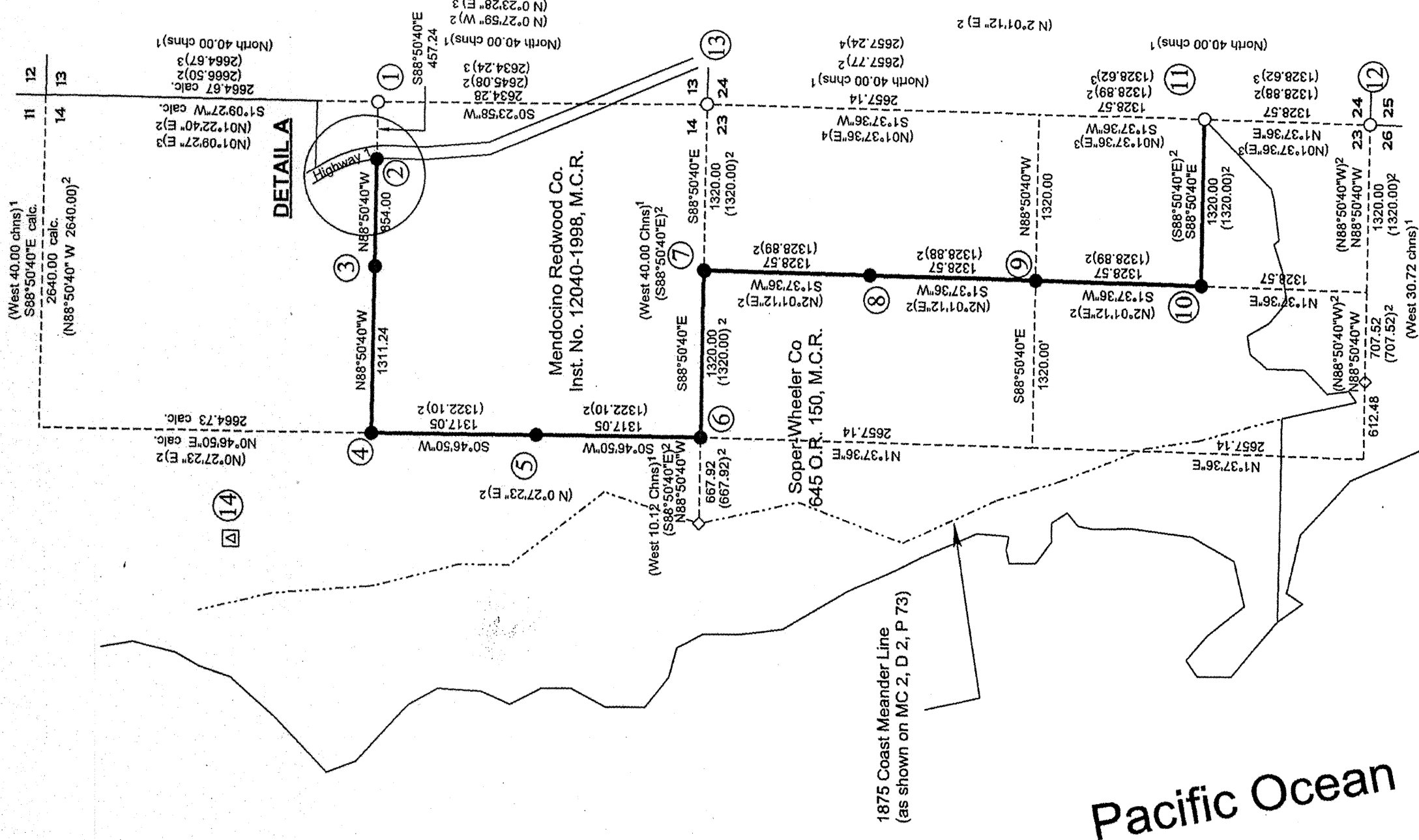
After searching for and not finding the Government Quarter Corner and meander corners, I accepted Glover's bearings and distances for the shape of Sections 14 and 23, which are based on Deputy Surveyor D.D. Brown's survey under contract of February 19, 1875.

Basis of Bearings

Field tie between Section Corner 23/24 and the Section Corner 23/24

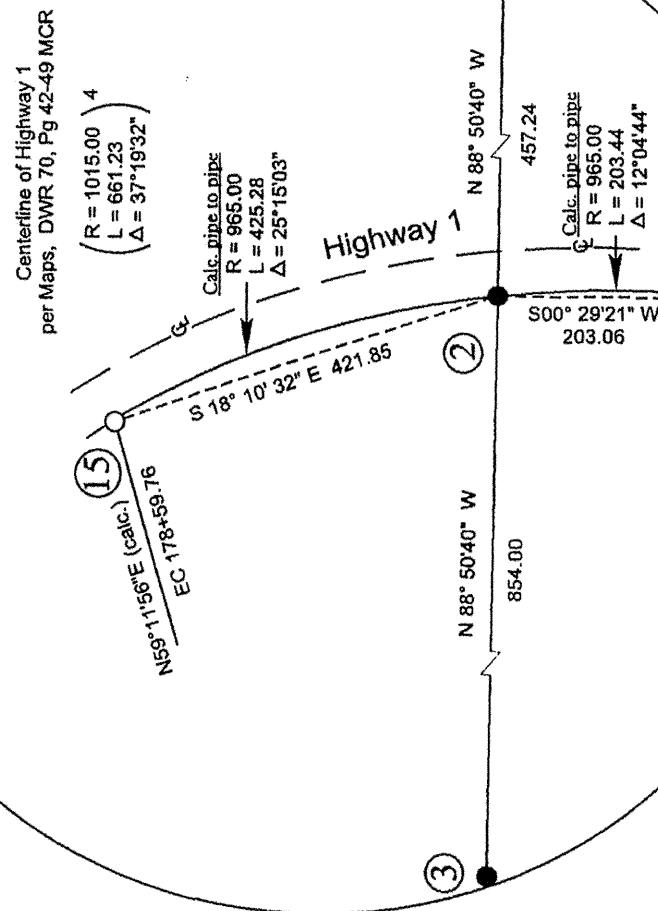
per Map Case 2, Drawer 64, Page 42

of N 1°37'36" E, 5314.48-ft and field of N 1°37'36" E, 5314.28-ft.



DETAIL A

Scale 1" = 200'



Recorder's Statement

Filed this 14th day of Dec., 2010 at 2:41 PM in

MAPS, Drawer 80, Page 42, Mendocino County Records at the request of Ronald D. Hunt, Hunt Surveying and Forestry, Inc.

Susan M. Ranochak
Mendocino County Recorder

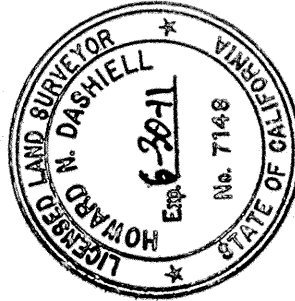
Fee \$ 9.00

By Julie Kaiser Deputy

County Surveyor's Statement

This map has been examined in accordance with Section 8766 of the Professional Land Surveyors Act this 13th day of December, 2010.

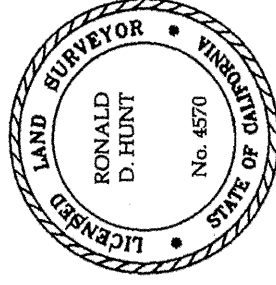
Howard N. Dashiell
Mendocino County Surveyor
California Licensed Land Surveyor No 7148
License Expires: June 30, 2011



Surveyor's Statement

This map correctly represents a survey made by me or under my direction, in conformance with the requirements of the Professional Land Surveyors Act at the request of Soper Wheeler Co. in August of 2009.

Ronald D. Hunt
Ronald D. Hunt
California Licensed Land Surveyor No. 4570
Expiration: September 30, 2012



Record of Survey
for
Soper Wheeler Co.
and
Mendocino Redwood Co

Sections 14 & 23 T22N, R18W, M.D.M.

Mendocino County

State of California

August 2009

Scale 1" = 1000'

Sheet 1 of 1

MAPS

DRAWER

80

PAGE

42

#069

