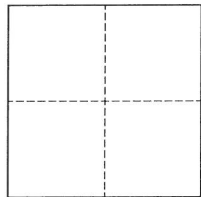


CORNER RECORD

Agency Index BK 149 PG 12Document Number CR 16201City of BerkeleyCounty of Alameda, CaliforniaBrief Legal Description Monument near 620 Colusa Avenue, South of Intersection with Thousand Oaks Blvd

CORNER TYPE

COORDINATES (Optional)



- ☐ Government Corner ☒ Control
☐ Meander ☐ Property
☐ Rancho ☐ Other

Date of Survey 08/02/2022

N. _____ E. _____

Elevation _____

Units ☐ Metric ☐ U.S. Survey Foot

Horizontal Datum _____

Zone _____ Epoch Date _____

Vertical Datum _____

☐ Complies with Public Resources Code §§8801-8819☐ Complies with Public Resources Code §§8890-8902PLS Act Ref.: ☐ 8765(d) ☒ 8771 ☐ 8773 ☐ Other:

Corner/
Monument: ☒ Left as found ☐ Established ☐ Rebuilt ☒ Pre-Construction
☐ Found and tagged ☐ Reestablished ☒ Referenced ☐ Post-Construction

Narrative of corner identified and monument as found, set, reset, replaced, or removed:

☒ See sheet #2 for description(s):

This Corner Record is being filed to reference the position of an existing monument, prior to a street rehabilitation project. This document is for preservation purposes only, and no attempt was made to determine the relationship to property, centerline, or right-of-way lines.

SURVEYOR'S STATEMENT

This Corner Record was prepared by me or under my direction in conformance with

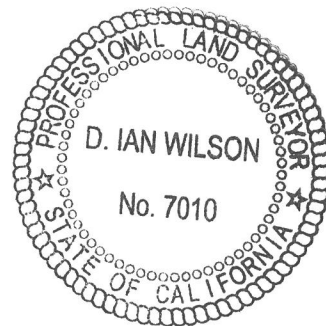
the Professional Land Surveyors' Act on August 30, 2022Signed [Signature] P.L.S. or R.C.E. No. 8040

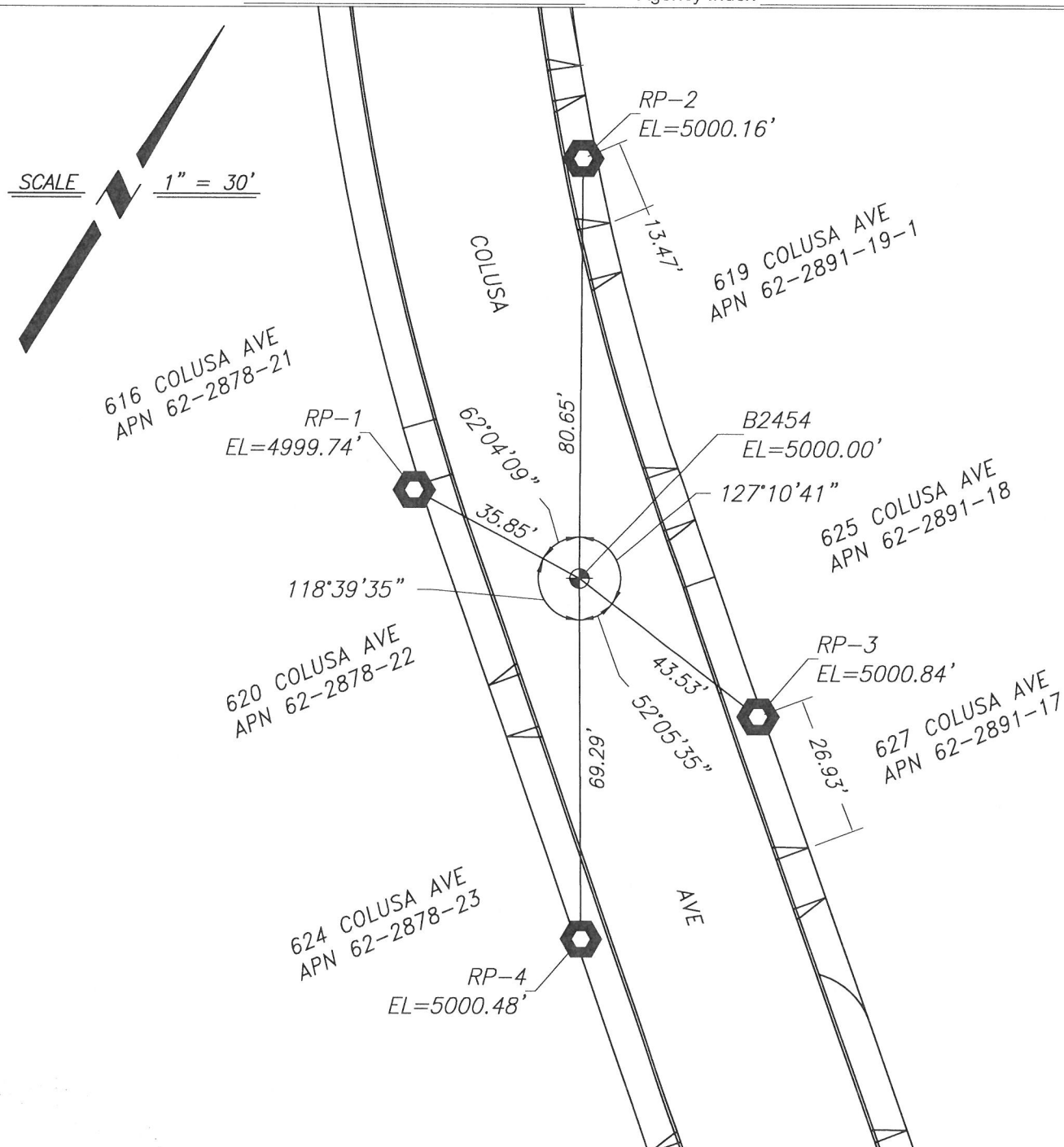
COUNTY SURVEYOR'S STATEMENT

This Corner Record was received _____

and examined and filed SEP 3 1 2022Signed D. Ian Wilson P.L.S. or R.C.E. No. 7010Title ALAMEDA COUNTY SURVEYOR

County Surveyor's Comment _____



LEGEND

FOUND MONUMENT, CONCRETE
MONUMENT WITH $\frac{3}{8}$ " BRASS PIN



$\frac{3}{4}$ " IRON PIPE, WITH CAP, STAMPED
LS 8040, IN LANDSCAPE AREA, AS
REFERENCE POINT

NOTES

1. BASIS OF ELEVATIONS: MONUMENT B2454,
ASSUMED ELEVATION OF 5000.00'