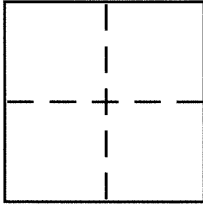


CORNER RECORD

BK 79 PG 48Document Number CR 8280City of HAYWARDCounty of ALAMEDA, CaliforniaBrief Legal Description LOTS 99 & 100, "E. 14TH ST. HOME SITES", FILED IN BOOK 18 OF MAPS, PAGE 56

CORNER TYPE

Government Corner ☐ Control ☐
Meander ☐ Property ☒
Rancho ☐ Other ☐
Date of Survey APRIL 18, 2016

COORDINATES (Optional)

N. _____
E. _____
Zone _____ NAD27 ☐ NAD83 ☐
NAD83 Epoch _____
Elev. _____
Vert. Datum: NGVD29 ☐ NAVD88 ☐
Meas. Units: Metric ☐ Imperial ☐

Corner – Left as found ☐ Found and tagged ☐ Established ☒ Reestablished ☐ Rebuilt ☐

Identification and type of corner found: Evidence used to identify or procedure used to establish or reestablish the corner:

FOUND: 2.5" DIAMETER BRASS DISCS & PUNCH IN MONUMENT WELLS, IN MAITLAND DRIVE,

AS SHOWN ON BK 18 MAPS, PG 56

SEE SKETCH ON PAGE 2 OF 2

A description of the physical condition of the monument as found and as set or reset: _____

SET: 3/4" IRON PIPE WITH PLASTIC PLUG & TACK, AND NAIL WITH 3/4" BRASS TAG "PLS 7393"

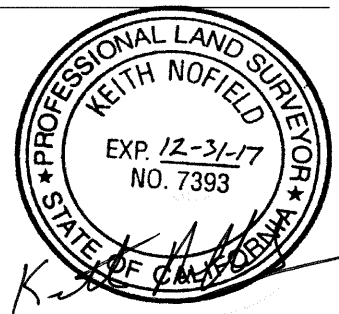
SEE SKETCH ON PAGE 2 OF 2

SURVEYOR'S STATEMENT

This Corner Record was prepared by me or under my direction in conformance with

the Land Surveyor's Act on APRIL 20, 2016

Signed K. Nofield P.L.S. or R.C.E. No. PLS 7393



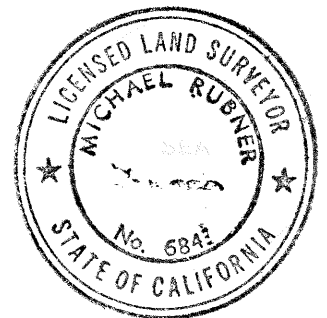
COUNTY SURVEYOR'S STATEMENT

This Corner Record was received 20 APRIL, 2016

and examined and filed 4 MAY, 2016

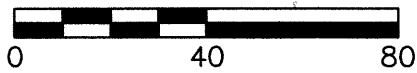
Signed Michael Rubner P.L.S. or R.C.E. No. 6843

Title COUNTY SURVEYOR

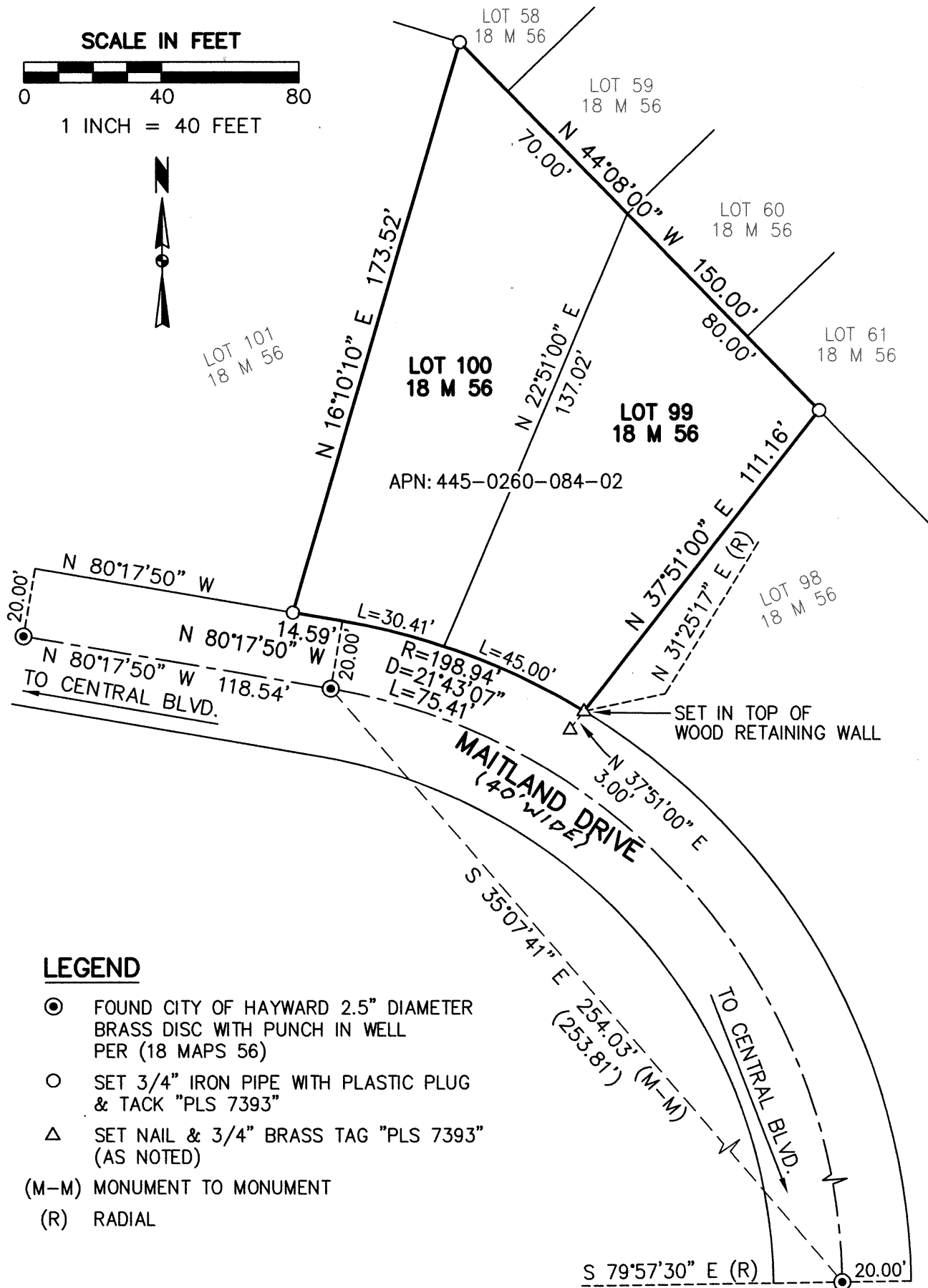


County Surveyor's Comment _____

SCALE IN FEET



1 INCH = 40 FEET



LEGEND

- FOUND CITY OF HAYWARD 2.5" DIAMETER BRASS DISC WITH PUNCH IN WELL PER (18 MAPS 56)
- SET 3/4" IRON PIPE WITH PLASTIC PLUG & TACK "PLS 7393"
- △ SET NAIL & 3/4" BRASS TAG "PLS 7393" (AS NOTED)
- (M-M) MONUMENT TO MONUMENT
- (R) RADIAL

(JOB NO. 16-029)