

Rhyme LED

Light up your imagination

创新
INNOVATION

Lighting



质量
QUALITY

服务
SERVICE

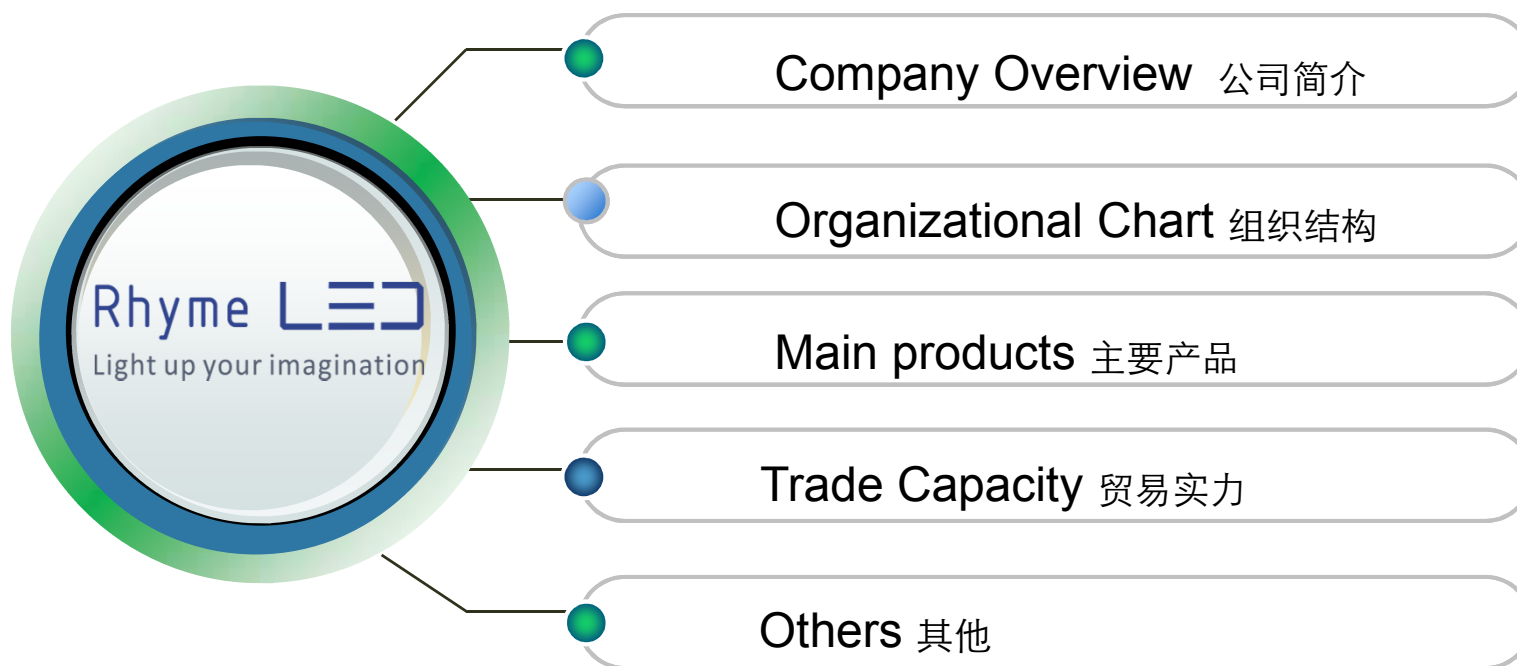
LED

LED RHYTHM Optronic Technology (Suzhou) Co., Ltd

www.ledhighbayfactory.com



Contents 目录





Company Overview 公司简介

集LED照明产品研发、设计、生产、销售、照明解决方案及安装维护为一体

➤High-tech company that integrates R&D, design, manufacture, sales, after sales of LED lighting, lighting design and control system consultant service.

注重技术创新及差异化发展

➤Focus on technology innovation and development of differentiation.

公司已拥有多项专利产品，且通过ISO9001:2008质量体系认证，产品通过UL、DLC、LM79、TuV、CE、CB、RoHS 及 CCC 等多项产品认证

➤Passed ISO9001: 2008 quality system certification, products passed UL,DLC,LM79, TuV,CE,CB,RoHS and CCC certification and many other certifications.

公司致力于工业照明产品设计及生产，配套智能控制系统，给予客户最优解决方案

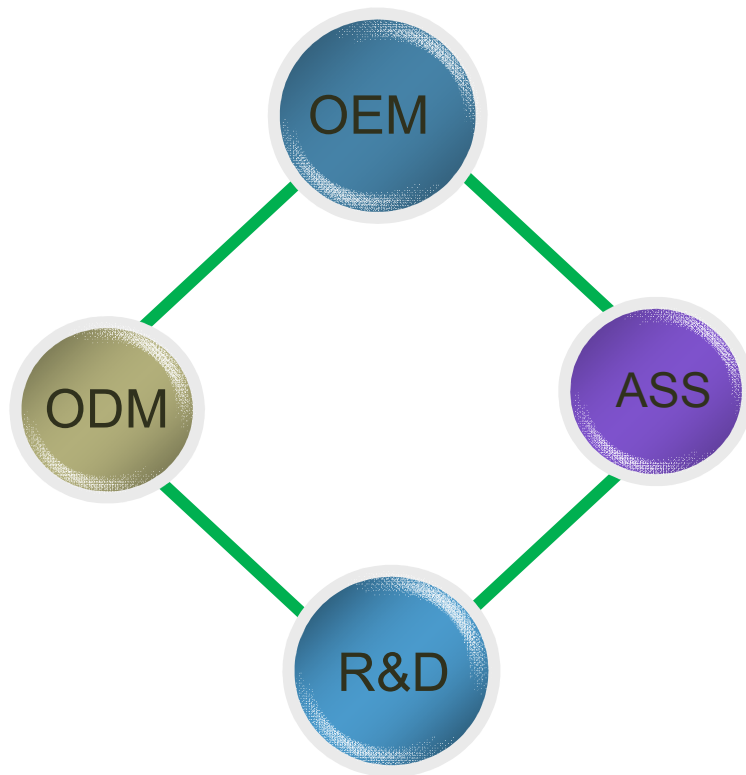
➤Committed to designing and producing industrial lighting, supporting intelligent control system, giving customers the best solutions.

主要销售至西欧、北美及南美，深受海内外客户好评

➤Products are mainly sold to Western Europe, North America and South America, and etc., well-received in domestic and overseas.



Company Overview 公司简介



Innovative Technology 创新技术

长期以来为了客户的满意，我们已经成长为一个富有创造力的LED制造商
We are growing up a creative LED Lighting manufacturer, in order to meet customer's needs.

Quality Control 质量管理

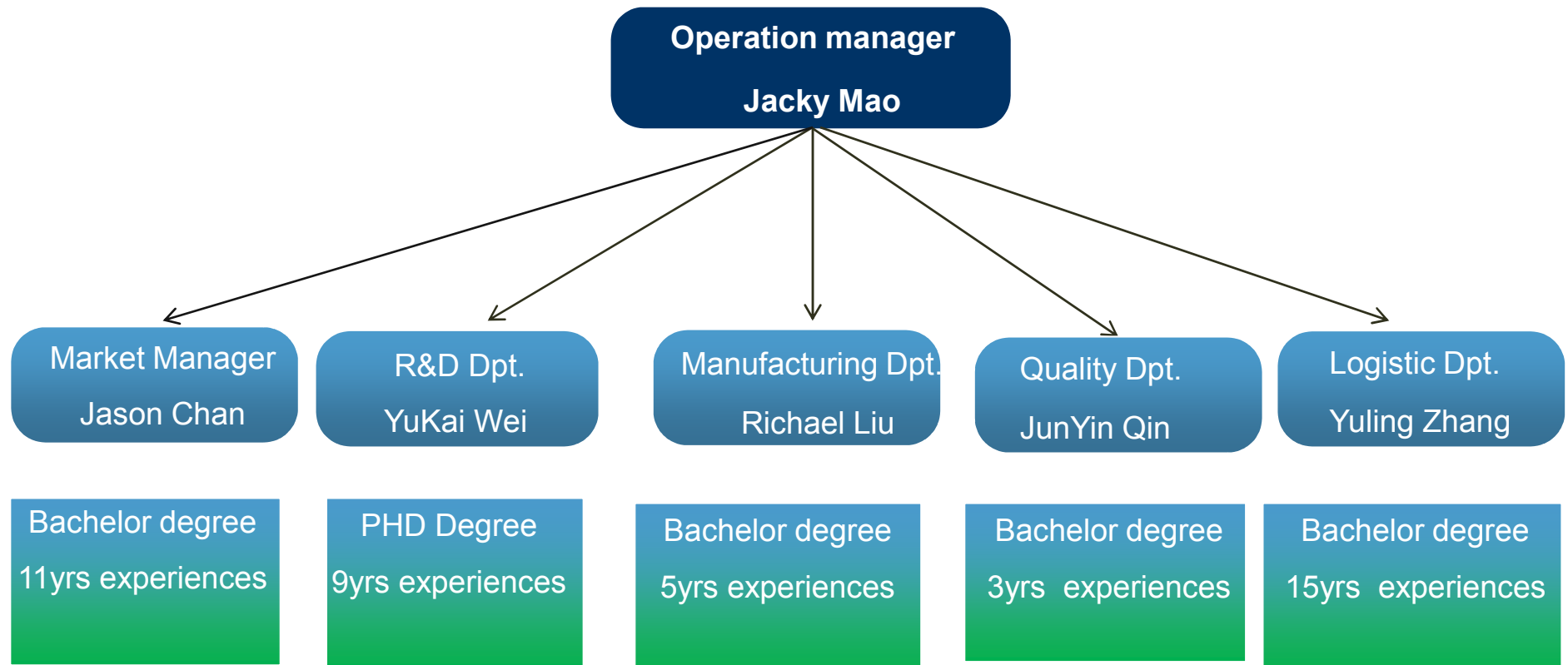
公司通过ISO 9001:2008质量体系认证，从原材料检测到成品出货检验，严格的管控流程，确保产品失效比率小于0.01%
With ISO 9001:2008 certificates by TuV. Inspection from materials to finished goods, less 0.01% failure ratio through strict process control.

Customer Service 客户服务

通过专业的团队，提供产品设计、制造生产、照明环境设计及售后服务等
Offer Product design, manufacturer, the lighting environment design & after sales service by professional team.



Organizational Chart 组织结构





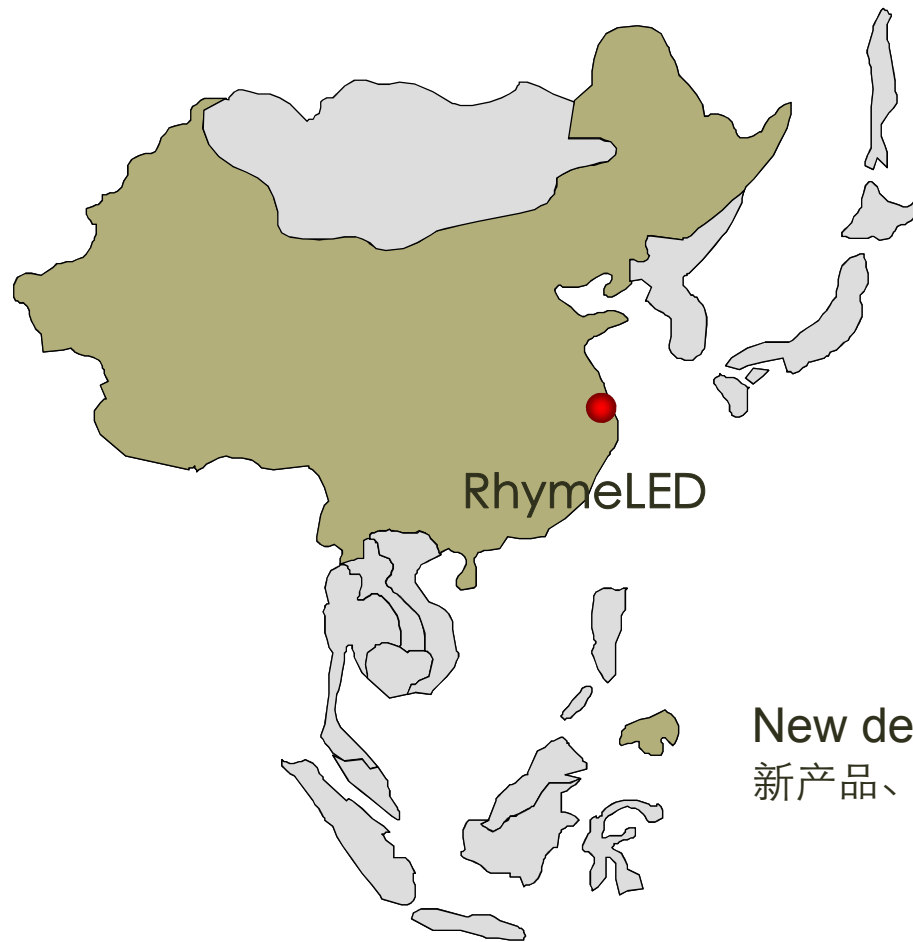
Organizational Chart 组织结构

**Our team is passionate, enthusiastic,
as well as experienced in international cooperative projects.**





Main Products 主要产品



1,LED High Bay Lights 工矿灯

2,LED Flood Lights 投光灯

3,Retrofit LED Bulb Light 球泡灯



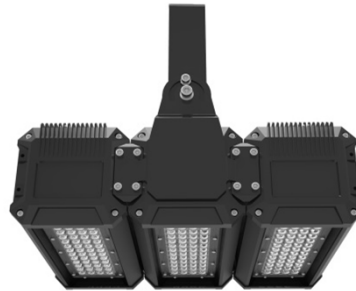
New design, reliable quality and competitive price
新产品、好品质、好价格



Main Products-High bay light 主要产品-工矿灯



- Name: Diamond
- Max Power: 300W
- Lumen Eff: 150Lm/W
- Beam Angle: 30, 60, 120
- Max Input Voltage: 528V
- Value Add: 1-10V, Motion Sensor, Daylight Sensor, Photocell Sensor, DALI, ZigBee etc.



- Name: Transformers
- Max Power: 700W
- Lumen Eff: 110Lm/W
- Beam Angle: 30, 60, 90
- Max Input Voltage: 528V
- Value Add: 1-10V, Motion Sensor, Daylight Sensor, Photocell Sensor, DALI, ZigBee etc.



- Name: Lumina
- Max Power: 700W
- Lumen Eff: 110Lm/W
- Beam Angle: 30, 60, 90, 140*80, 70*30, 90*60
- Max Input Voltage: 528V
- Value Add: 1-10V, Motion Sensor, Daylight Sensor, Photocell Sensor, DALI, ZigBee etc.



Main Products-Floodlight 主要产品-泛光灯



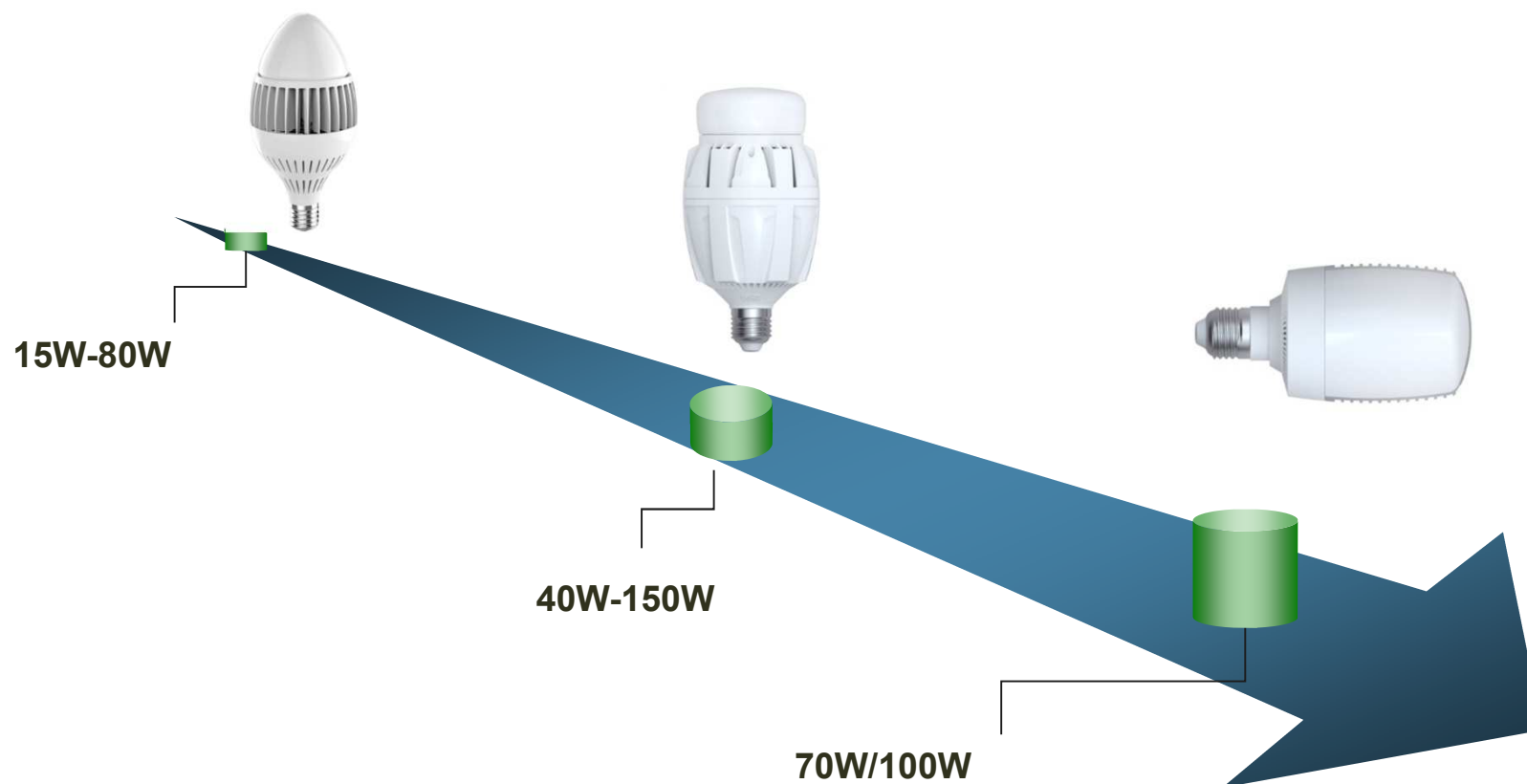
- Name: Transformers
- Max Power: 700W
- Lumen Eff: 110Lm/W
- Beam Angle: 30, 60, 90, 140*80, 70*30, 90*60
- Max Input Voltage: 528V
- Value Add: 1-10V, Motion Sensor, Daylight Sensor, Photocell Sensor, DALI, ZigBee etc.



- Name: Metallic
- Max Power: 500W
- Lumen Eff: 110Lm/W
- Beam Angle: 8, 15, 36, 60 20*60, 60*20
- Max Input Voltage: 528V



Retrofit LED Bulb Light- 大功率替换用灯





Trade Capacity- Consultation 贸易实力-咨询



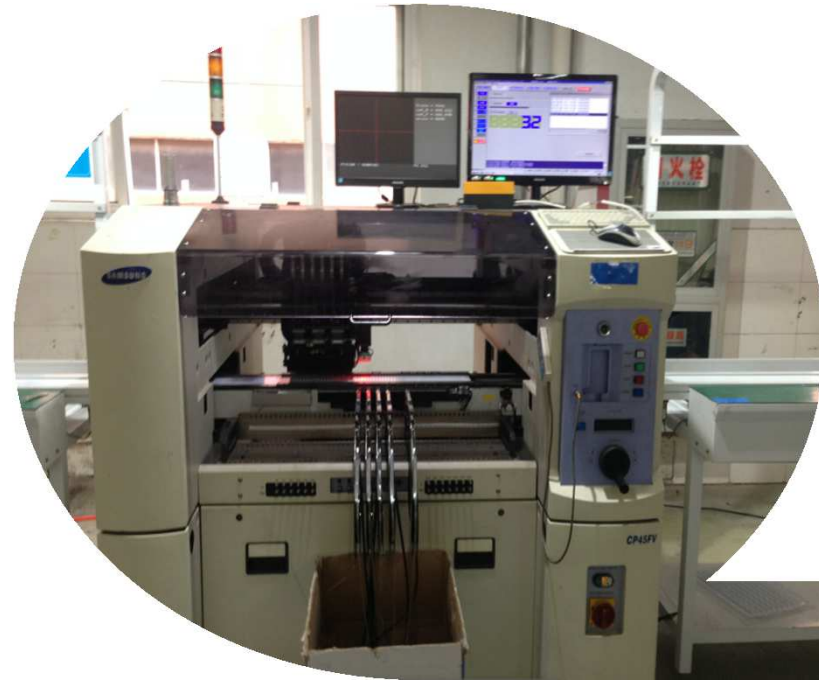
Datasheet, Test Reports, IES Files,
Installation Instruction, DIALUX Simulation etc

7*24H Service



Trade Capacity- Research 贸易实力-研发

- 5-10 persons R&D team 5-10人的研发队伍
- The most advanced equipment 最先进的设备
- More than 10 years experiences in this field 超过10年的从业经验
- R&D investment is 3% annual sales. 3%的年销售额用于研发





Trade Capacity- Production 贸易实力-生产

- Factory Size: 3,200 square meters 厂房面积: 3,200平方
- No. of Production Lines: 4 生产线: 4条
- Contract Manufacturing: OEM/ODM is welcome 生产: OEM/ODM服务
- Annual Output Value: above US\$8 Million 年销售额: 超过800万美元





Trade Capacity- QA 贸易实力-质量管控



IQC.....100% Check.....Processing.....Weld.....Aging Test.....Package



Trade Capacity- Delivery 贸易实力-交期

- Factory Area: 3,200 Square Meters (2.3 Floor) 厂房面积: 3200平米
- No. of Production Lines: 2 生产线: 2条
- Number Of Employees: 30- 50 People 员工人数: 30-50人
- Delivery Terms: FOB,CFR,CIF, EXW,DDU,DDP... 贸易条款: FOB,CFR,CIF, EXW,DDU,DDP...
- Average Lead Time: 21-28 days 生产交期: 21-28 天



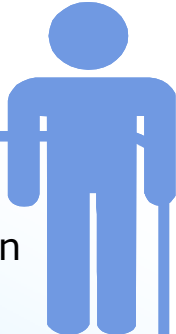


Business Partners 贸易伙伴



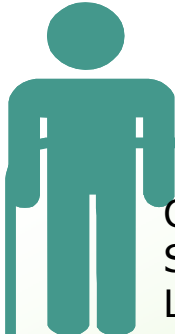


Our Exhibitions 展会



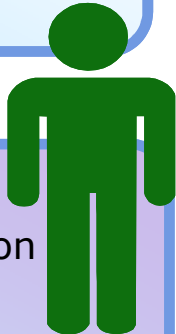
Hong Kong International
Lighting Fair-Spring Edition

6-9, April, 2016
Booth No. **1B-D07**
Location: Hong Kong



China (Ningbo) International
Sourcing Fair on Lamps &
LED Illumination

12-14, May, 2016
Booth No. **2A-227/229**
Location: Ningbo, China



Hong Kong International
Lighting Fair-Autumn Edition

27-30, Oct, 2016
Booth No. **5B-C43**
Location: Hong Kong



London International
Lighting Fair

19-20, Nov, 2016
Booth No. **1D-F**
Location: London, UK

Thank You!

