

CONDOMINIUM PLAN FOR
LOT "I" TRACT 36-82A
LOT "I" TRACT 36-82B

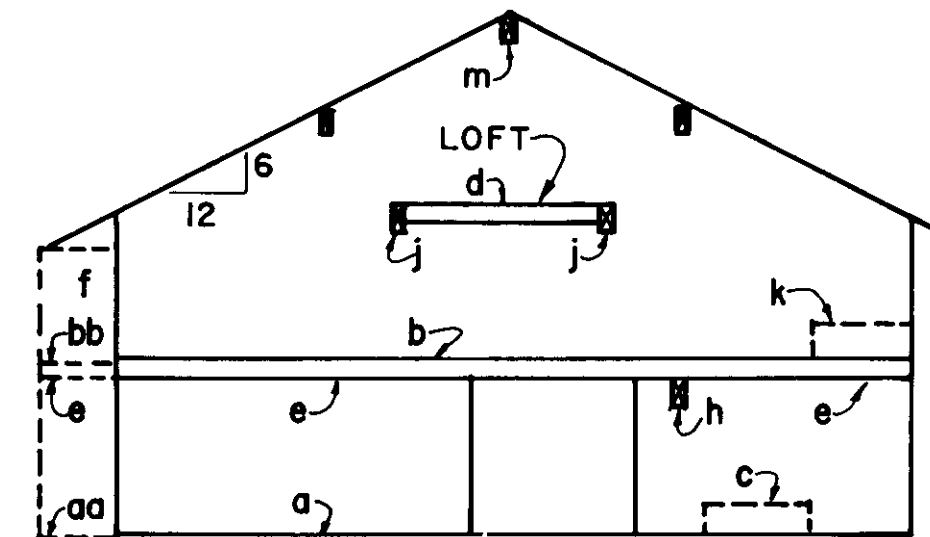
SNOWCREEK II

CONSISTING OF 12 SHEETS
BEING ALL OF LOT "I" ON THAT CERTAIN
TRACT NO. 36-82A
AND ALL OF LOT "I" ON THAT CERTAIN
TRACT NO. 36-82B
COUNTY OF MONO, CALIFORNIA

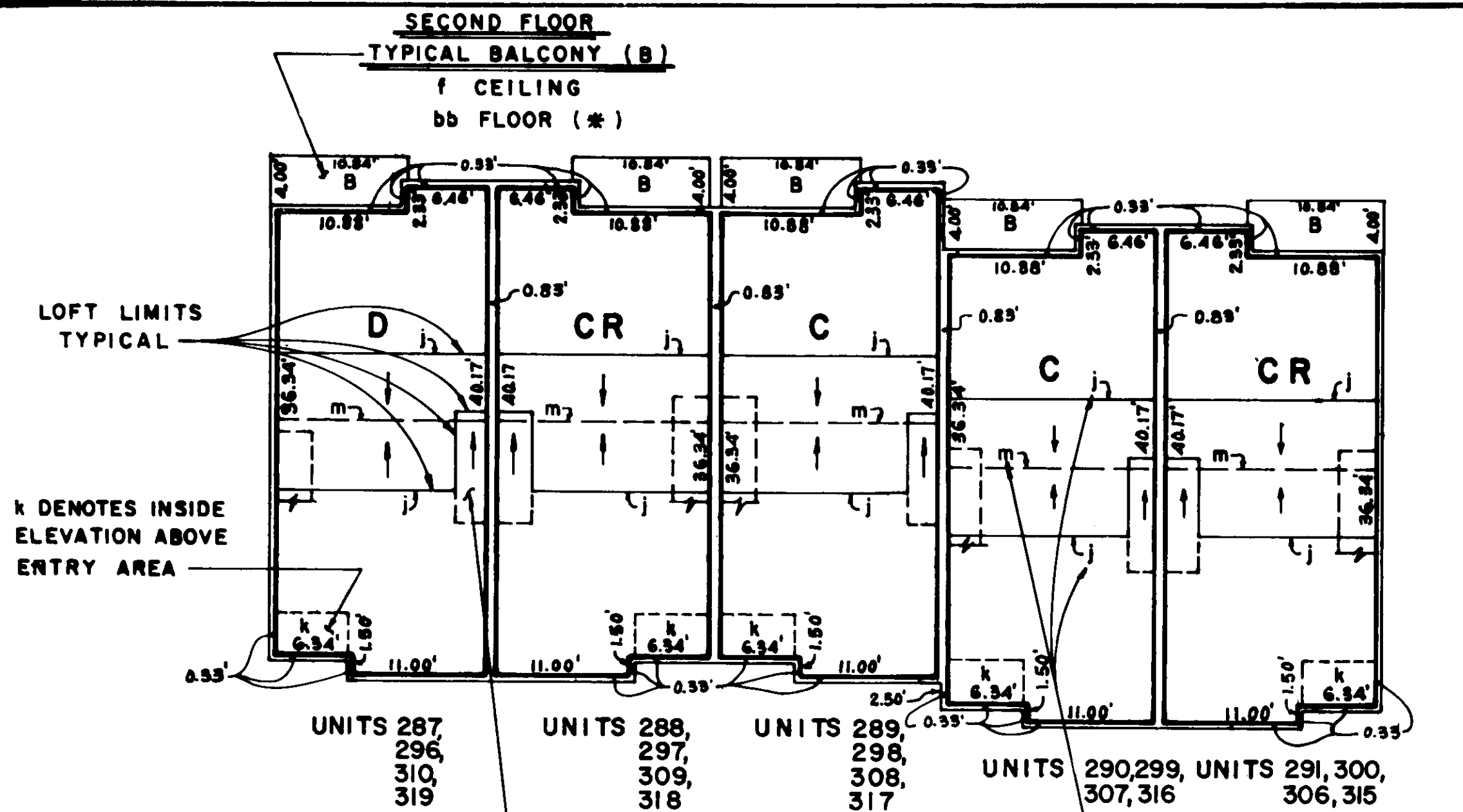
CREEGAN & D'ANGELO

CONSULTING ENGINEERS
SAN JOSE, CALIFORNIA

SCALE 1" = 10' SEPTEMBER, 1979

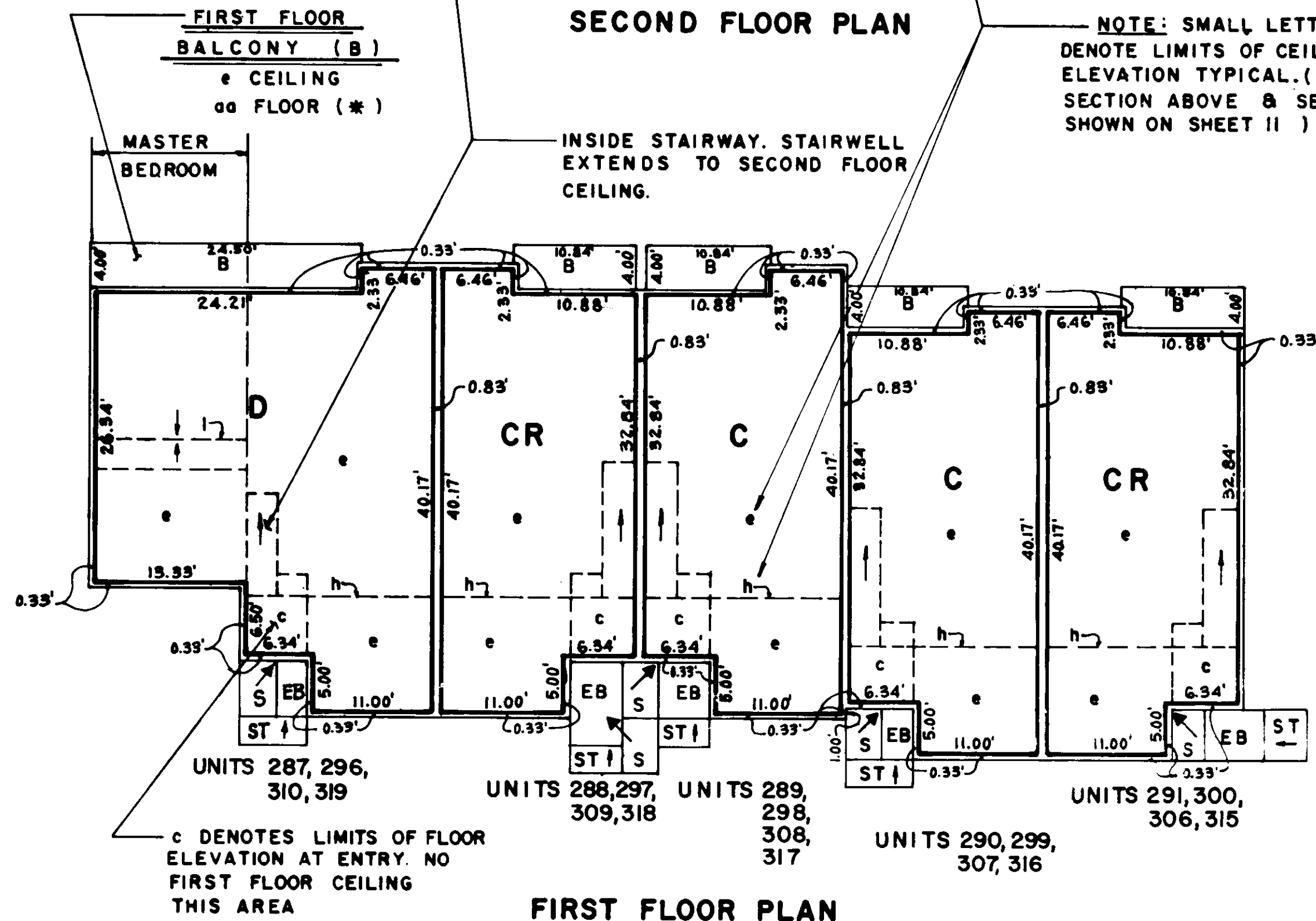


TYPICAL SECTION
UNITS C & D
(EXCEPT FIRST FLOOR MASTER BEDROOM
SEE SHEET 7)



SECOND FLOOR PLAN

NOTE: SMALL LETTERS
DENOTE LIMITS OF CEILING
ELEVATION TYPICAL. (SEE
SECTION ABOVE & SECTION
SHOWN ON SHEET II)



FIRST FLOOR PLAN

UNIT NO.	FLOOR ELEVATIONS				CEILING ELEVATIONS						
	a *	b *	c	d	e	f	h	j	k	l	m
287	7904.40	7913.40	7905.90	7921.15	7912.40	7920.11	7911.44	7920.15	7914.90	7918.01	7930.19
288	7904.40	7913.40	7905.90	7921.15	7912.40	7920.11	7911.44	7920.15	7914.90	7918.01	7930.19
289	7904.40	7913.40	7905.90	7921.15	7912.40	7920.11	7911.44	7920.15	7914.90	7918.01	7930.19
290	7904.40	7913.40	7905.90	7921.15	7912.40	7920.11	7911.44	7920.15	7914.90	7918.01	7930.19
291	7904.40	7913.40	7905.90	7921.15	7912.40	7920.11	7911.44	7920.15	7914.90	7918.01	7930.19
296	7905.80	7914.80	7907.30	7922.55	7913.80	7921.51	7912.84	7921.55	7916.30	7919.41	7931.59
297	7905.80	7914.80	7907.30	7922.55	7913.80	7921.51	7912.84	7921.55	7916.30	7919.41	7931.59
298	7905.80	7914.80	7907.30	7922.55	7913.80	7921.51	7912.84	7921.55	7916.30	7919.41	7931.59
299	7905.80	7914.80	7907.30	7922.55	7913.80	7921.51	7912.84	7921.55	7916.30	7919.41	7931.59
300	7905.80	7914.80	7907.30	7922.55	7913.80	7921.51	7912.84	7921.55	7916.30	7919.41	7931.59
306	7908.40	7917.40	7909.90	7925.15	7916.40	7924.11	7915.44	7924.15	7918.90	7922.01	7934.19
307	7908.40	7917.40	7909.90	7925.15	7916.40	7924.11	7915.44	7924.15	7918.90	7922.01	7934.19
308	7908.40	7917.40	7909.90	7925.15	7916.40	7924.11	7915.44	7924.15	7918.90	7922.01	7934.19
309	7908.40	7917.40	7909.90	7925.15	7916.40	7924.11	7915.44	7924.15	7918.90	7922.01	7934.19
310	7908.40	7917.40	7909.90	7925.15	7916.40	7924.11	7915.44	7924.15	7918.90	7922.01	7934.19
315	7908.70	7917.70	7910.20	7925.45	7916.70	7924.41	7915.74	7924.45	7919.20	7922.31	7934.49
316	7908.70	7917.70	7910.20	7925.45	7916.70	7924.41	7915.74	7924.45	7919.20	7922.31	7934.49
317	7908.70	7917.70	7910.20	7925.45	7916.70	7924.41	7915.74	7924.45	7919.20	7922.31	7934.49
318	7908.70	7917.70	7910.20	7925.45	7916.70	7924.41	7915.74	7924.45	7919.20	7922.31	7934.49
319	7908.70	7917.70	7910.20	7925.45	7916.70	7924.41	7915.74	7924.45	7919.20	7922.31	7934.49

(SEE SHEET 7 & 11 FOR TYPICAL SECTION)

* aa is 0.25' below Elevation a

bb is 0.25' below Elevation b

(FOR LEGEND SEE SHEET 2)