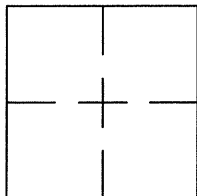


**CORNER RECORD**

Document Number CR 7930

City of ALBANY County of ALAMEDA, California

Brief Legal Description FOUND MONUMENT IN WALK LOCATED AT THE NORTHEASTERLY CORNER OF THE INTERSECTION OF SOLANO AVENUE AND TALBOT AVENUE.



**CORNER RECORD**

Government Corner ☐ Control ☒  
 Meander ☐ Property ☐  
 Rancho ☐ Other ☐  
 Date of Survey 12/23/15

**COORDINATES**  
(Optional)

N. \_\_\_\_\_  
 E. \_\_\_\_\_  
 Zone \_\_\_\_\_ Datum \_\_\_\_\_  
 Elev. \_\_\_\_\_

**Corner** — Left as found ☒ Found and tagged ☐ Established ☐ Reestablished ☐ Rebuilt ☐

Identification and type of corner found: Evidence used to identify or procedure used to establish of reestablish the corner:  
FOUND 1" DIAMETER BRASS DISC WITH PUNCH STAMPED "ALBANY RCE 17501".

SUBJECT MONUMENT FOUND AT GRADE IN CONCRETE WALK (NO MONUMENT WELL).

THIS POINT WAS REFERENCED PRIOR TO A CONSTRUCTION PROJECT IN THE VICINITY.

A description of the physical condition of the monument as found and as set or reset: \_\_\_\_\_  
FOUND AND SET POINTS AS SHOWN ON PAGE 2.

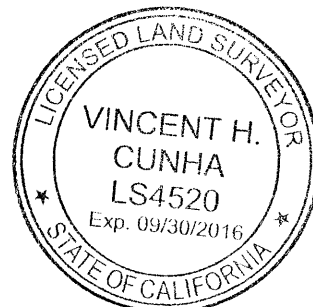
THESE TIES ARE FOR THE PURPOSE OF PERPETUATING THE FOUND MONUMENTATION.

NO CLAIM IS MADE AS TO THE RELATIONSHIP OF THE POINTS OR LINES SHOWN HEREON TO TRUE BOUNDARY LOCATIONS.

**SURVEYOR'S STATEMENT**

This Corner Record was prepared by me or under my direction in conformance with the Land Surveyors' Act on DECEMBER 29, 2015.

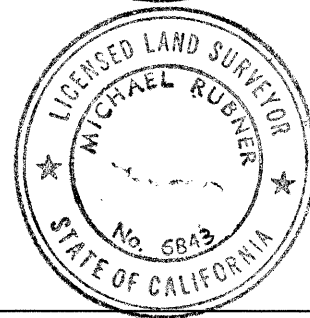
Signed Vincent H. Cunha L.S. Number LS 4520  
 VINCENT H. CUNHA



**COUNTY SURVEYOR'S STATEMENT**

This Corner Record was received 7 JANUARY 2016 and examined and filed 24 MARCH 2016.

Signed Michael Rubner Title COUNTY SURVEYOR

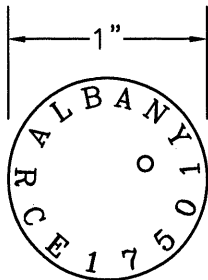
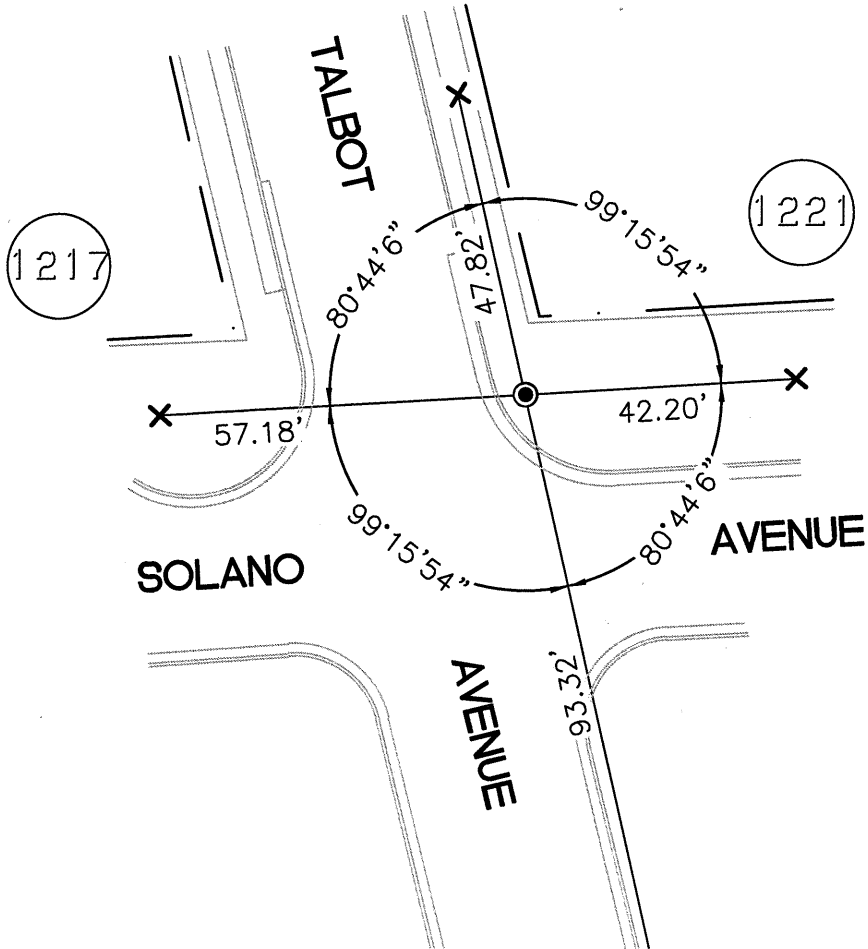


**County Surveyor's Comment** \_\_\_\_\_

SCALE: 1"=30'

# LEGEND

- FOUND 1" BRASS DISC (SEE DETAIL)
- ✕ SET CUT CROSS IN CONCRETE
- ③ REFERENCE STREET ADDRESS



DETAIL  
NTS