

CORNER RECORD

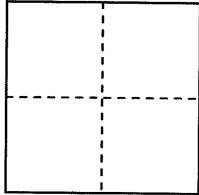
City of Fremont

Brief Legal Description: Parcel 3 of Parcel Map 1163, filed October 26, 1973, in Map Book 80, Page 49, Alameda County Records.

Document Number

County of Alameda, California

CORNER TYPE



Government Corner ☐

Meander ☐

Rancho ☐

Date of Survey 8/11/2005

Elev. _____

Control ☐

Property ☒

Other ☐

COORDINATES

(Optional)

N. _____

E. _____

Zone _____ Datum _____

Corner - Left as found ☐ Found and tagged ☐ Established ☒ Reestablished ☐ Rebuilt ☐

Identification and type of corner found: Evidence used to identify or procedure used to establish or reestablish the corner:

The property lines were located from two existing City monuments in Durham Road shown on the map of Tract 5293. That map shows the relationship between those monuments and County monuments in Durham Road, not found, which are also shown on Record of Survey 455. The Record of Survey shows the dimensions of a Parcel entitled "Re 2553 Im 905, 70-7903" which became the boundary line of Parcel Map 1163.

A description of the physical condition of the monument as found and as set or reset:

Set 3/4" iron pipes with plugs and nails with tag as indicated on the plat on the back (Page 2)

SURVEYOR'S STATEMENT

This Corner Record was prepared by me or under my direction in conformance with

the Land Surveyor's Act on November 14, 2005

Signed Charles A. Ludwig L.S. or R.C.E. Number R.C.E. 31917



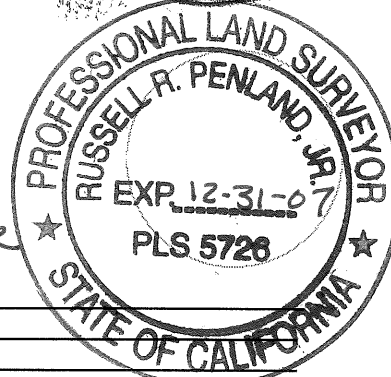
COUNTY SURVEYOR'S STATEMENT

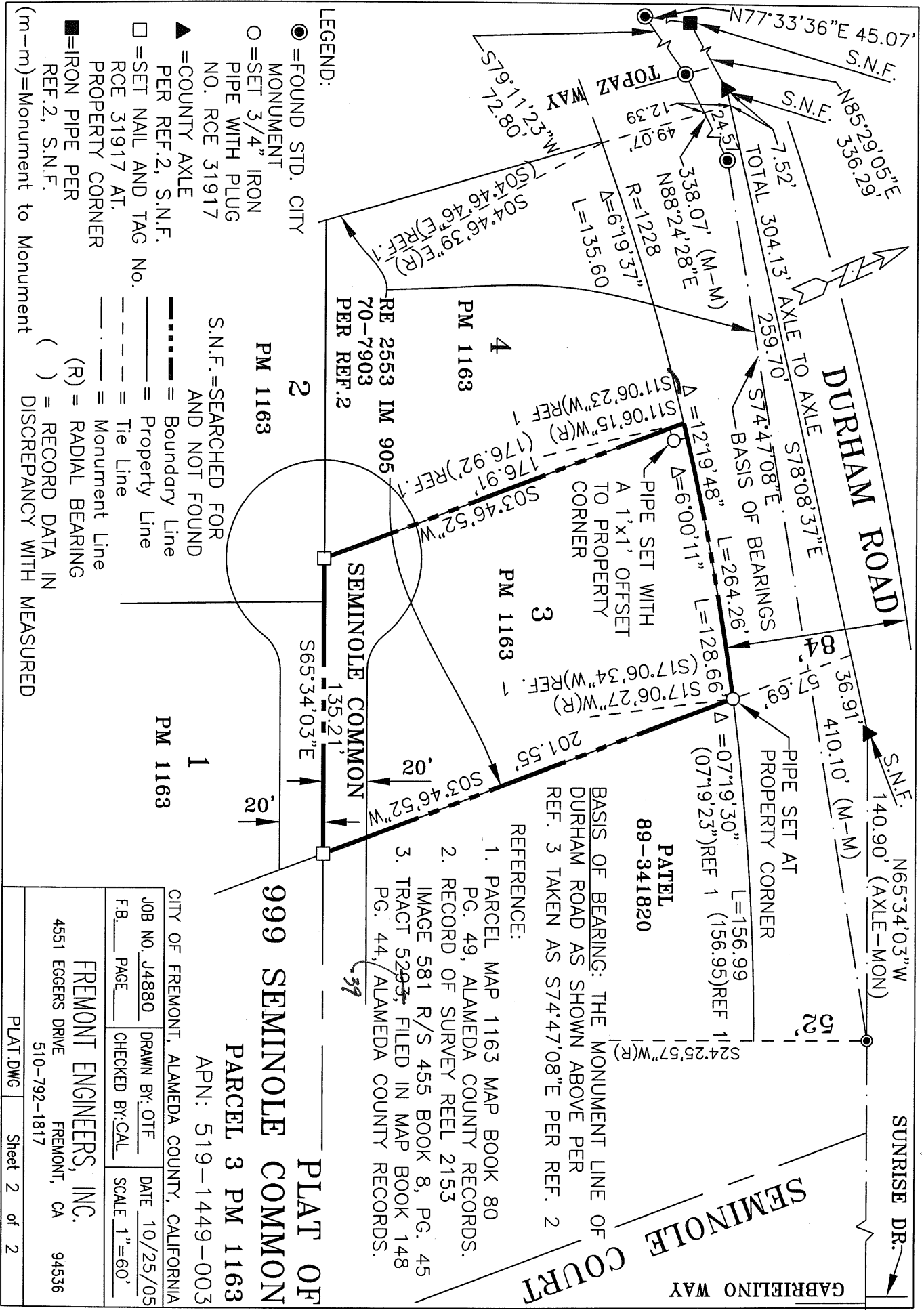
This Corner Record was received 11-17-2005 and examined

And filed 12-21-05

Signed Russell R. Penland, Jr. Title County Surveyor

County Surveyor's Comment _____





LEGEND:

- = FOUND STD. CITY MONUMENT
- = SET 3/4" IRON PIPE WITH PLUG NO. RCE 31917
- ▲ = COUNTY AXLE PER REF. 2, S.N.F.
- = SET NAIL AND TAG NO. RCE 31917 AT PROPERTY CORNER
- = IRON PIPE PER REF. 2, S.N.F.
- (m-m) = Monument to Monument

S.N.F. = SEARCHED FOR AND NOT FOUND

--- = Boundary Line

- - - - = Property Line

--- = Tie Line

--- = Monument Line

(R) = RADIAL BEARING

() = RECORD DATA IN DISCREPANCY WITH MEASURED

REFERENCE:

1. PARCEL MAP 1163 MAP BOOK 80 PG. 49, ALAMEDA COUNTY RECORDS.
2. RECORD OF SURVEY REEL 2153 IMAGE 581 R/S 455 BOOK 8, PG. 45 TRACT 5293, FILED IN MAP BOOK 148 PG. 44, ALAMEDA COUNTY RECORDS.

BASIS OF BEARING: THE MONUMENT LINE OF DURHAM ROAD AS SHOWN ABOVE PER REF. 3 TAKEN AS S74°47'08"E PER REF. 2

PATEL
89-341820

CITY OF FREMONT, ALAMEDA COUNTY, CALIFORNIA			
JOB NO. J4880	DRAWN BY: OTF	DATE 10/25/05	
F.B. PAGE	CHECKED BY: CAL	SCALE 1"=60'	
FREMONT ENGINEERS, INC.			
4551 EGGERS DRIVE FREMONT, CA 94536			
510-792-1817			
PLAT DWG Sheet 2 of 2			