

STAKING NOTES

1. ALL RADII ARE 3/0' UNLESS OTHERWISE NOTED.
2. ALL DIMENSIONS ARE MEASURED TO FACE OF CURB UNLESS OTHERWISE NOTED.
3. SEE SHEET C011 FOR GENERAL NOTES.

| LINE TABLE | | | | |
|------------|---------|-------------|-----------------------|-----------------------|
| LINE # | LENGTH | DIRECTION | START POINT | END POINT |
| L-1 | 21.00' | S35°42'51"E | 322872.66, 1133019.81 | 322884.91, 1133001.76 |
| L-2 | 82.80' | S35°42'51"E | 322884.91, 1133001.76 | 322933.25, 1132984.53 |
| L-3 | 136.91' | N35°42'51"W | 323019.16, 1132823.37 | 322933.25, 1132984.53 |
| L-4 | 131.01' | S40°29'59"W | 323027.26, 1132887.93 | 323073.16, 1132823.37 |
| L-5 | 104.22' | S20°25'38"E | 323090.89, 1132985.59 | 323227.26, 1132887.93 |
| L-6 | 51.60' | S24°19'44"E | 323069.71, 1133032.65 | 323090.89, 1132985.59 |
| L-7 | 30.45' | S54°17'09"W | 323069.71, 1133032.65 | 323044.99, 1133014.87 |
| L-8 | 137.63' | S54°17'09"W | 323044.99, 1133014.87 | 322933.25, 1132984.53 |
| L-9 | 46.64' | N24°24'14"W | 323044.99, 1133014.87 | 323025.72, 1133057.35 |
| L-10 | 116.37' | S54°16'37"W | 322979.39, 1133069.71 | 322884.91, 1133001.76 |
| L-11 | 43.63' | S24°24'14"E | 323051.39, 1133072.17 | 323069.71, 1133001.76 |
| L-12 | 27.18' | N46°41'12"W | 323048.70, 1133075.94 | 323028.92, 1133094.58 |
| L-13 | 17.64' | N57°14'33"W | 323027.18, 1133075.94 | 323012.34, 1133105.49 |
| L-14 | 11.40' | S35°48'50"E | 322998.39, 1133121.64 | 323005.05, 1133112.40 |

| CURVE TABLE | | | | | |
|-------------|--------|--------|---------|--------------|---------------|
| CURVE # | LENGTH | RADIUS | DELTA | CHORD LENGTH | CHORD BEARING |
| C-1 | 51.49' | 39.64' | 74.3868 | 47.95' | N75°03'48"W |
| C-2 | 3.74' | 14.37' | 14.9059 | 3.73' | N38°18'46"W |
| C-3 | 2.21' | 12.00' | 10.5559 | 2.21' | N5°57'53"W |
| C-4 | 10.10' | 27.00' | 21.4287 | 10.04' | S46°31'42"E |

CONTRACTOR SHALL PROTECT ALL ITEMS OUTSIDE LIMITS OF CONSTRUCTION UNLESS OTHERWISE NOTED IN THE CONSTRUCTION PLANS OR SPECIFICATIONS.

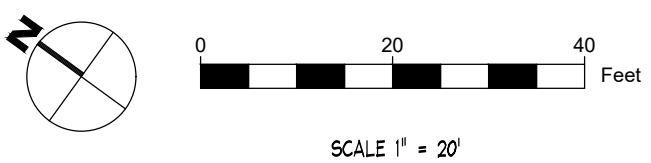
CONTRACTOR SHALL FIELD VERIFY ALL EXISTING UTILITIES (LOCATIONS AND ELEVATIONS) PRIOR TO STARTING CONSTRUCTION AND ALERT ENGINEER TO ANY DISCREPANCIES IMMEDIATELY.

CONTRACTOR SHALL COORDINATE AND VERIFY LOCATION OF ALL SIGNAGE WITH OWNER PRIOR TO CONSTRUCTION.

CONTRACTOR SHALL COORDINATE AND ADJUST LOCATION OF LOOP DETECTORS TO AVOID UTILITY CONFLICTS PRIOR TO CONSTRUCTION.

CONTRACTOR SHALL INSTALL GENERAL UTILITY CONDUITS TO PLANTERS AROUND BUILDING AND PATIO. SEE ARCHITECTURAL/MEP PLANS FOR CONTINUATION.

24-HOUR CONTACT:
KENNETH GOODMAN
(561) 989-8079



ingenium
ENTERPRISES
PLANNING & ENGINEERING
221 ROSWELL ST.
SUITE 100
ALPHARETTA, GA 30009
770.437.8850
INGENIUM@GMAIL.COM



POPEYES
2401 NORTH COLUMBIA STREET
MILLEDGEVILLE, GEORGIA 31061



PLANS FOR:

CLIENT:

INTERFACE PROPERTIES, LLC
1001 E. TELECOM DRIVE
BOCA RATON, FLORIDA 33431
PHONE: (561) 989-8079

REVISION HISTORY

| | |
|----|--------------------|
| 1 | ISSUED FOR BIDDING |
| 2 | ISSUED FOR BIDDING |
| 3 | ISSUED FOR BIDDING |
| 4 | ISSUED FOR BIDDING |
| 5 | ISSUED FOR BIDDING |
| 6 | ISSUED FOR BIDDING |
| 7 | ISSUED FOR BIDDING |
| 8 | ISSUED FOR BIDDING |
| 9 | ISSUED FOR BIDDING |
| 10 | ISSUED FOR BIDDING |

THE CIVIL ENGINEER REGULARLY UPDATES ELECTRONIC FILES DURING THE DEVELOPMENT OF A PROJECT. AS A RESULT, THE DATA INCLUDED IN ANY CAD FILE OR DRAWING PRIOR TO ITS FINAL RELEASE DOES NOT NECESSARILY REFLECT THE COMPLETE SCOPE OR CONTENT AS DEFINED IN THE CONTRACT. THE CONTENTS IN THESE FILES MAY THEREFORE BE PRELIMINARY, INCOMPLETE, WORK IN PROGRESS, AND SUBJECT TO CHANGE. FURTHERMORE, THE INFORMATION CONTAINED HEREIN IS THE SOLE PROPERTY OF THE CIVIL ENGINEER. THE ORIGINAL LEGAL REPRESENTATION HERE OF THIS INFORMATION SHALL NOT BE USED, ALTERED, OR REPRODUCED IN ANY MANNER WITHOUT THE EXPRESSED WRITTEN CONSENT OF THE CIVIL ENGINEER. THESE PLANS ARE SUBJECT TO FEDERAL COPYRIGHT LAWS. ANY USE OF SAME WITHOUT EXPRESSED WRITTEN PERMISSION OF THE CIVIL ENGINEER IS PROHIBITED.

PROJ # 190035
DWG NAME 190035_C03.DWG
ISSUE DATE 11/05/2019
PROJ TGR: EKH

STAKING PLAN

C03.1

SHEET NUMBER

ISSUE FOR BID