

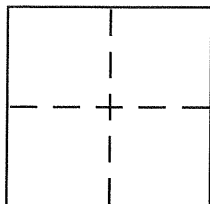
CORNER RECORD

BK 38 CR Pg 51
CR 4305

Document Number _____
County of Alameda, California

City of Pleasanton

Brief Legal Description Parcel 2 of Parcel Map 6261 ~ 225 PM 60



CORNER TYPE

Government Corner ☐ Control ☐
Meander ☐ Property ☒
Rancho ☐ Other ☐
Date of Survey 7/13/10

COORDINATES (Optional)

N. _____
E. _____
Zone _____ NAD27 ☐ NAD83 ☐
NAD83 Epoch _____
Elev. _____
Vert. Datum: NGVD29 ☐ NAVD88 ☐
Meas. Units: Metric ☐ Imperial ☐

Corner – Left as found ☐ Found and tagged ☐ Established ☒ Reestablished ☐ Rebuilt ☐

Identification and type of corner found: Evidence used to identify or procedure used to establish or reestablish the corner:

Found points shown on reverse

A description of the physical condition of the monument as found and as set or reset:

Set points shown on reverse

SURVEYOR'S STATEMENT

This Corner Record was prepared by me or under my direction in conformance with the Land Surveyor's Act on September 22, 2010

Signed [Signature] P.L.S. or R.C.E. No. 27818

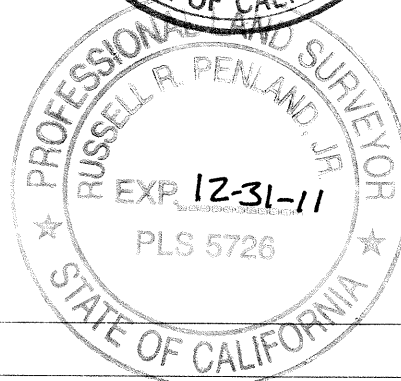
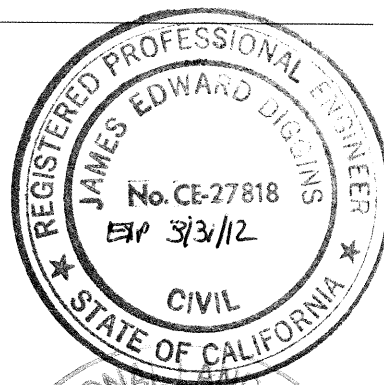
COUNTY SURVEYOR'S STATEMENT

This Corner Record was received 10-4-2010
and examined and filed 12-16-2010

Signed [Signature] P.L.S. or R.C.E. No. 5726

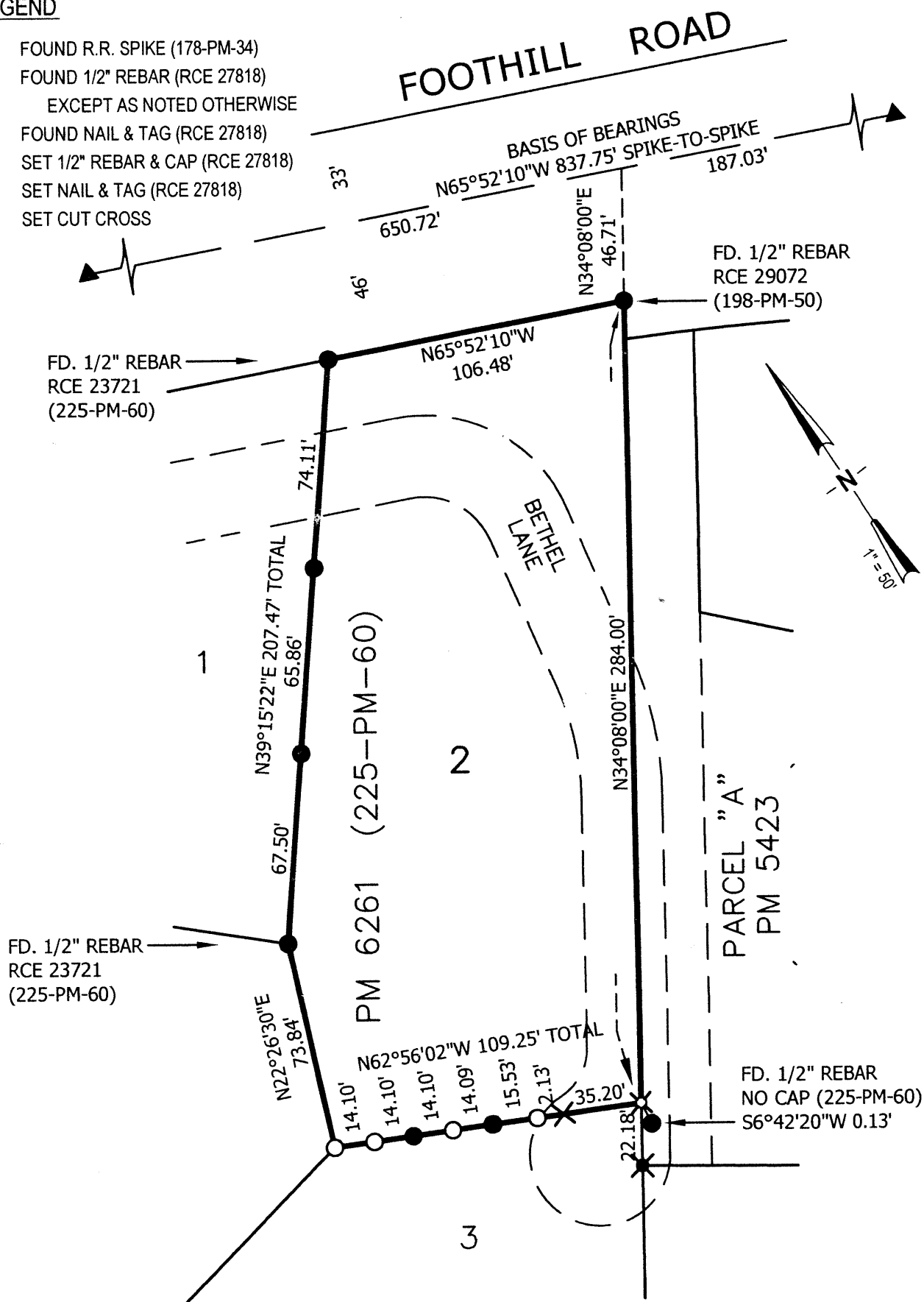
Title COUNTY SURVEYOR

County Surveyor's Comment _____



LEGEND

- ▲ FOUND R.R. SPIKE (178-PM-34)
- FOUND 1/2" REBAR (RCE 27818)
- EXCEPT AS NOTED OTHERWISE
- ✕ FOUND NAIL & TAG (RCE 27818)
- SET 1/2" REBAR & CAP (RCE 27818)
- ✕ SET NAIL & TAG (RCE 27818)
- ✕ SET CUT CROSS



JOB 98219