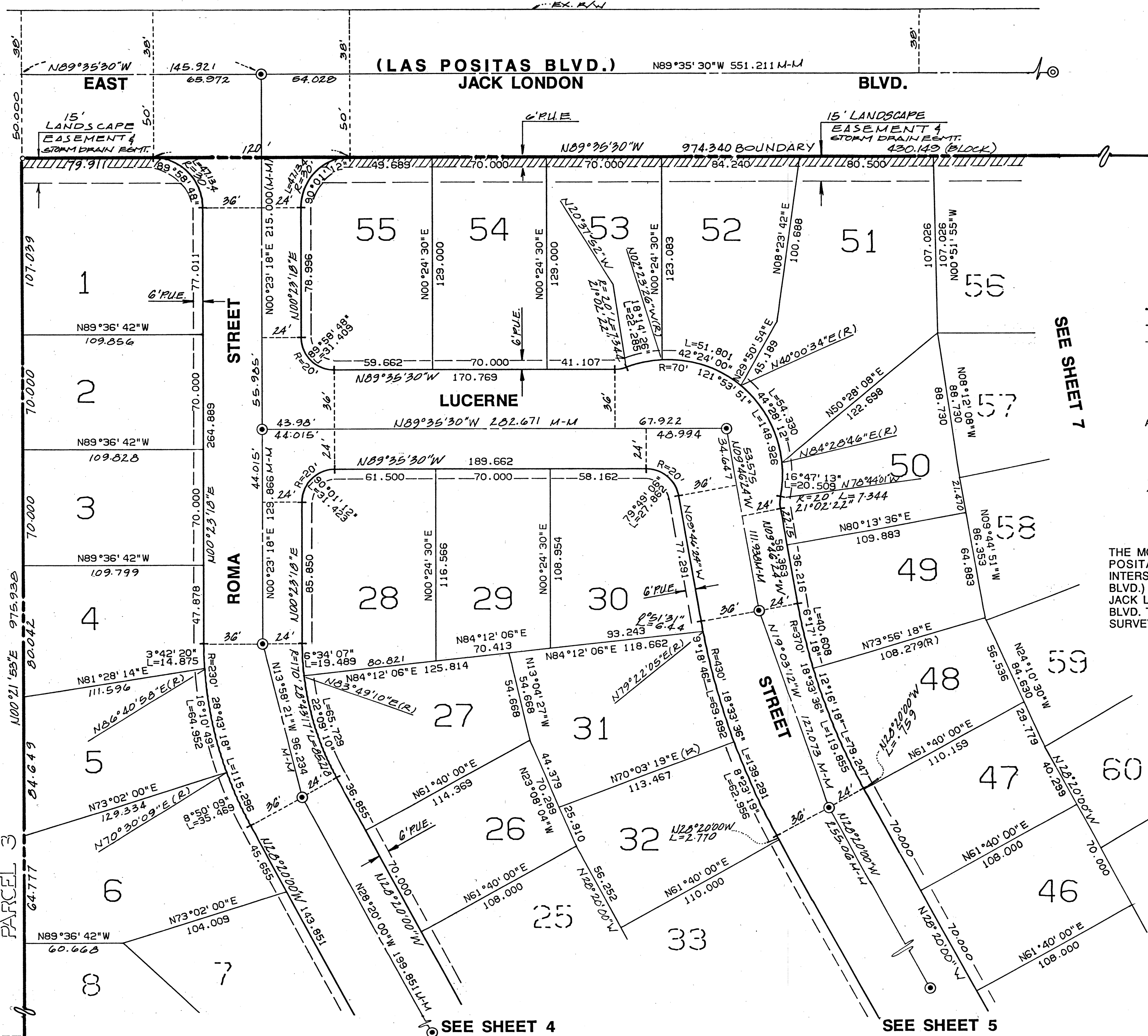


LIVERMORE JOINT UNION HIGH SCHOOL DISTRICT
PM 5623 RE. 1712 IM. 366
PARCEL 3



- LEGEND**
- TRACT BOUNDARY
 - LOT LINE, PARCEL LINE
 - MONUMENT LINE
 - EXISTING STANDARD CITY MONUMENT
 - STANDARD CITY MONUMENT TO BE SET
 - MONUMENT TO MONUMENT
 - P.U.E. PUBLIC UTILITY EASEMENT
 - A.C.F.C. & W.C.D. ALAMEDA COUNTY FLOOD CONTROL AND WATER CONSERVATION DISTRICT
 - MONUMENT TO TIE LINE
 - FD PIPE TAGGED R.C.E. 23,720
 - EASEMENT LINE
 - NO ACCESS
 - DENOTES RECORD DATA

BASIS OF BEARING

THE MONUMENT LINE ON EAST JACK LONDON BLVD. (LAS POSITAS BLVD.) FROM THE MONUMENT AT THE INTERSECTION OF EAST JACK LONDON BLVD. (LAS POSITAS BLVD.) AND ARLINGTON ROAD TO THE MONUMENT AT EAST JACK LONDON BLVD. (LAS POSITAS BLVD.) AND MURRIETA BLVD. TAKEN AS N. 89°35'30" W. AS SHOWN ON RECORD OF SURVEY NO. 309, DATED MAY 1, 1967.



TRACT 6156
(PARCEL 2 OF PM 5623)

City of Livermore
Alameda County California

Mackay & Somp
CIVIL ENGINEERING • LAND PLANNING • LAND SURVEYING
LIVERMORE CA

SCALE: 1"=40' MARCH, 1990
Sheet 3 of 7

BK197 pg 5